

Flood Restoration Plan

July 2022

As at 08:00am 07/07/2022

As floodwaters subside and roads are repaired and reopened, we expect that we will be able to gain access to customers that have been isolated for safety and restore supply to all customers over the next four days.

Anticipated access and restoration times are listed over the following pages.

These projected times may be impacted by ongoing poor weather conditions or where there is damage to roads and bridges preventing access to parts of the electricity network.

We are continuing to monitor the situation closely and will add further updates as new information comes to hand.

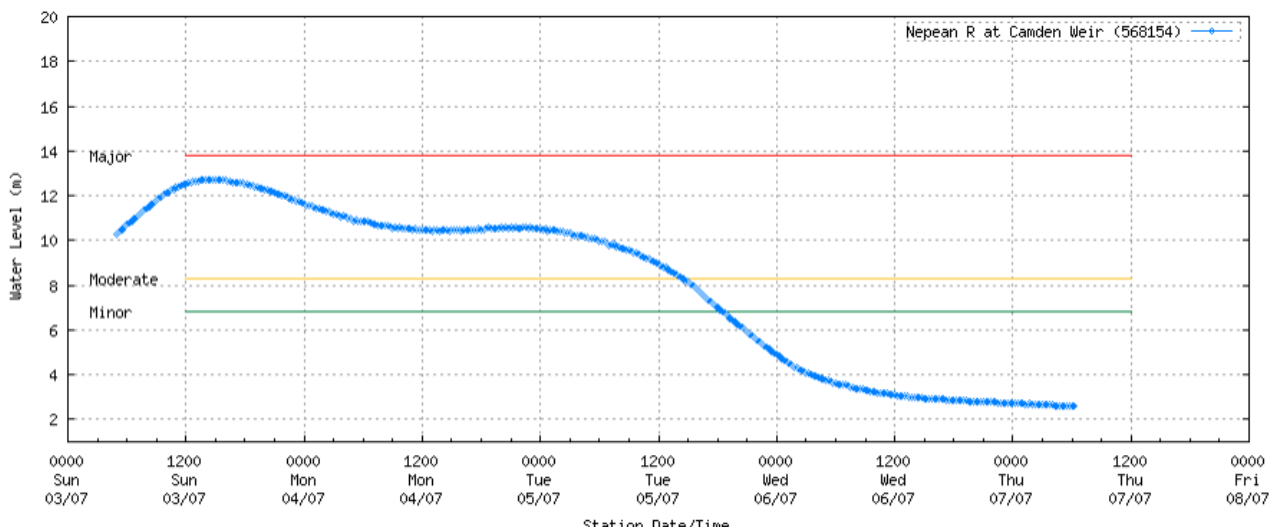
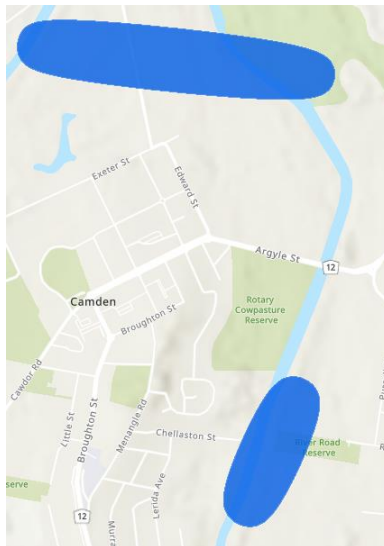
Plan continues overleaf

NEPEAN AREA

Argyle St, Camden – Customers impacted – 4

Expected ETR: 6:00pm Thursday 7/7/2022

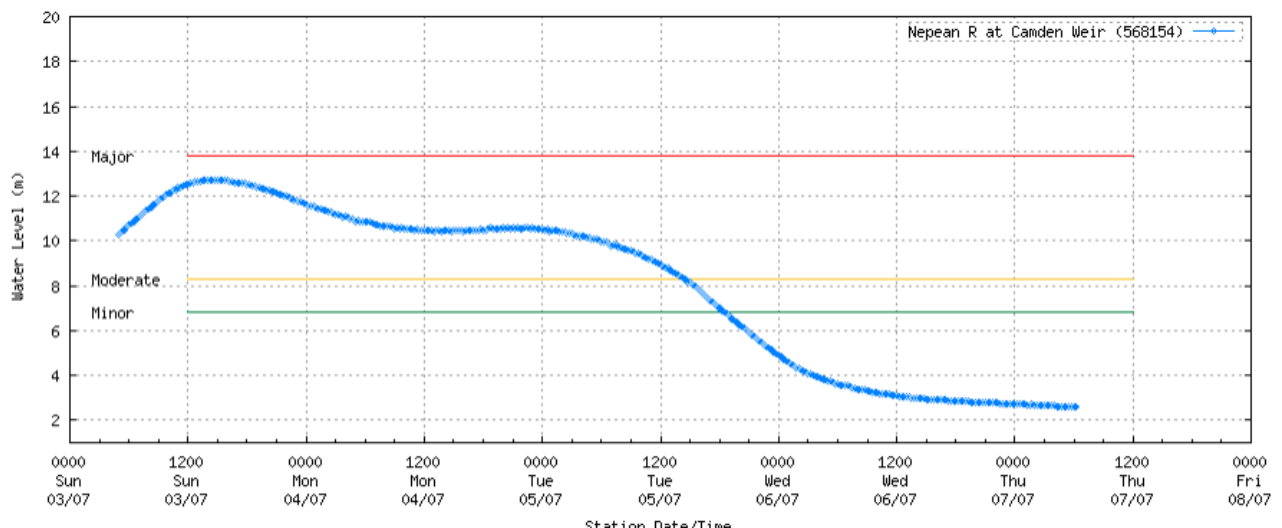
Premises have been isolated as water levels have impacted pumps and buildings alongside the river. Once water levels reduce we will be able to access the network for inspections and also ensure customers switchboards have not been impacted by water. We expect to gain access to this area when water levels at Camden Weir are below 2m.



Menangle Rd, Menangle – Customers impacted – 5

Expected ETR: 6:00pm Thursday 7/7/2022

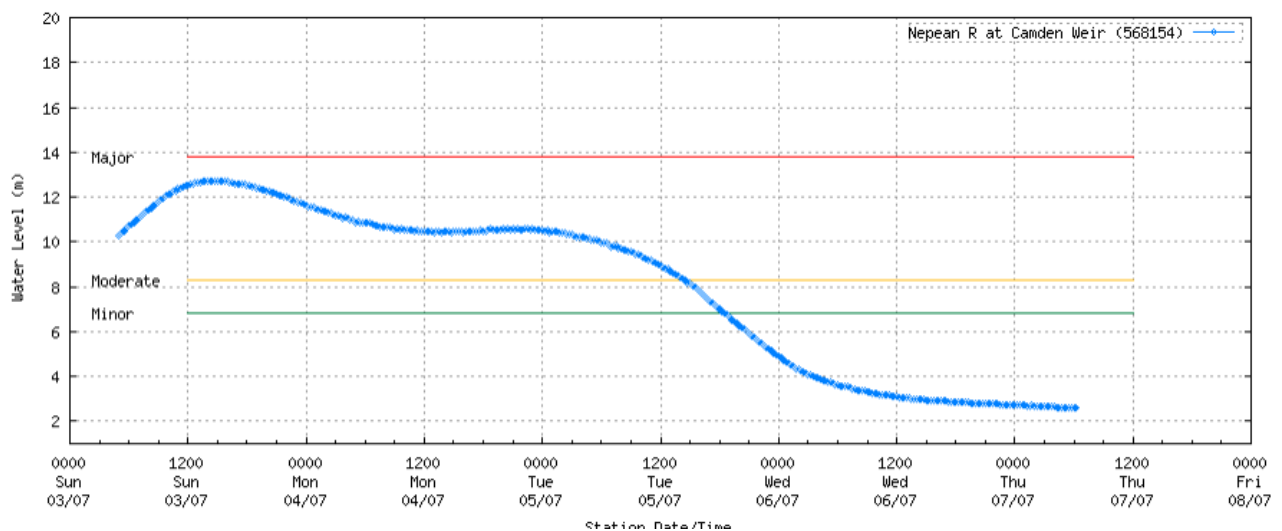
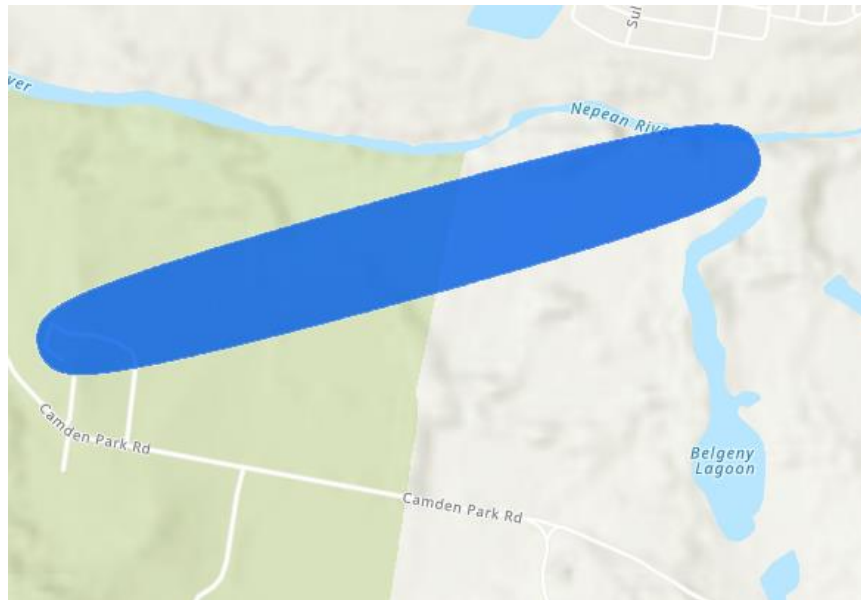
Premises have been isolated as water levels have impacted pumps and buildings alongside the river. Once water levels reduce we will be able to access the network for inspections and also ensure customers switchboards have not been impacted by water. We expect to gain access to this area when water levels at Camden Weir are below 2m.



Camden Park Rd, Camden South – Customers impacted – 22

Expected ETR: 6:00pm Thursday 7/7/2022

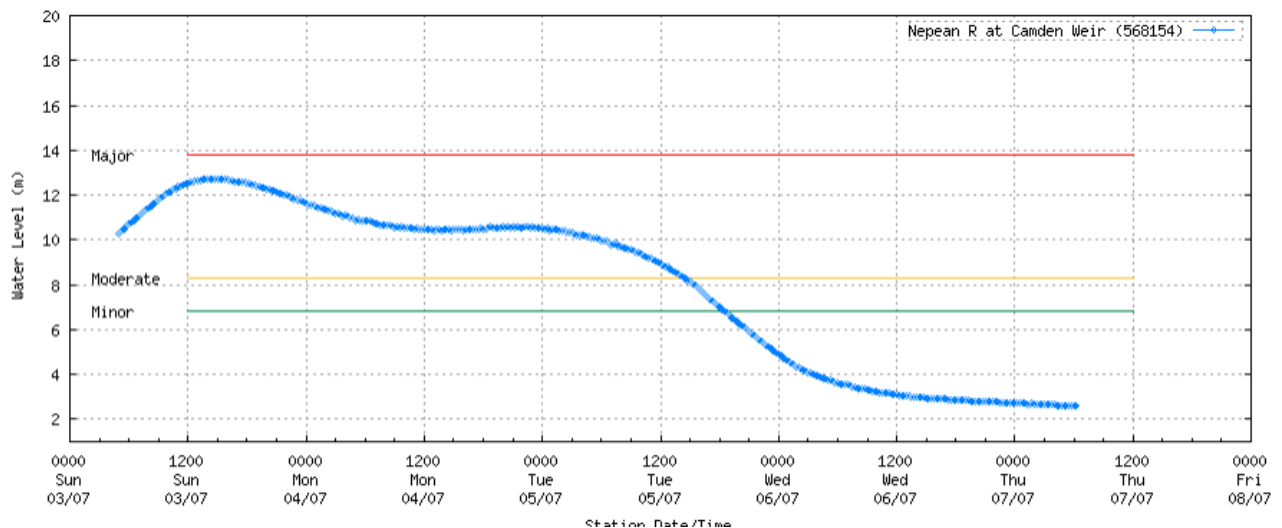
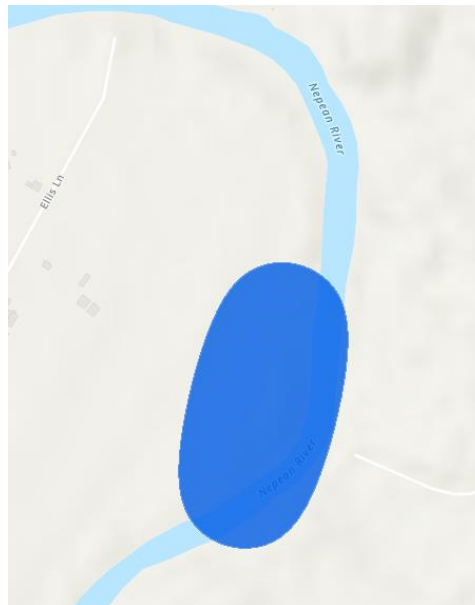
Premises have been isolated as water levels have impacted pumps and buildings alongside the river. Once water levels reduce we will be able to access the network for inspections and also ensure customers switchboards have not been impacted by water. We expect to gain access to this area when water levels at Camden Weir are below 2m.



Ellis Ln, Ellis Lane – Customers Impacted - 4

Expected ETR: 6:00pm Thursday 7/7/2022

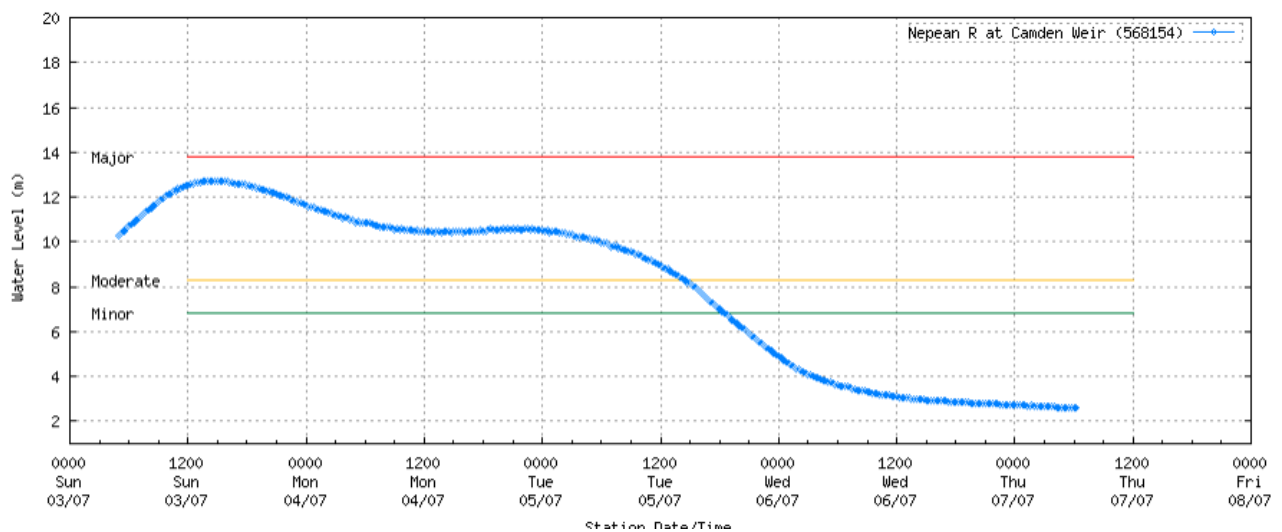
Premises have been isolated as water levels have impacted pumps and buildings alongside the river. Once water levels reduce we will be able to access the network for inspections and also ensure customers switchboards have not been impacted by water. We expect to gain access to this area when water levels at Camden Weir are below 2m.



Cobbitty Rd, Cobbitty – Customers Impacted – 15

Expected ETR: 6:00pm Thursday 7/7/2022

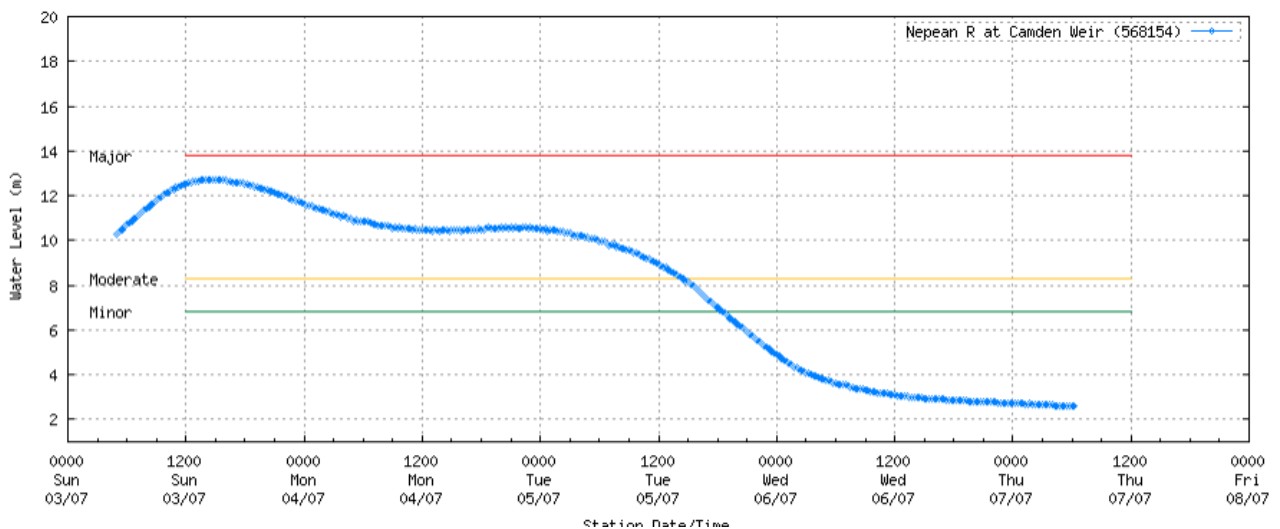
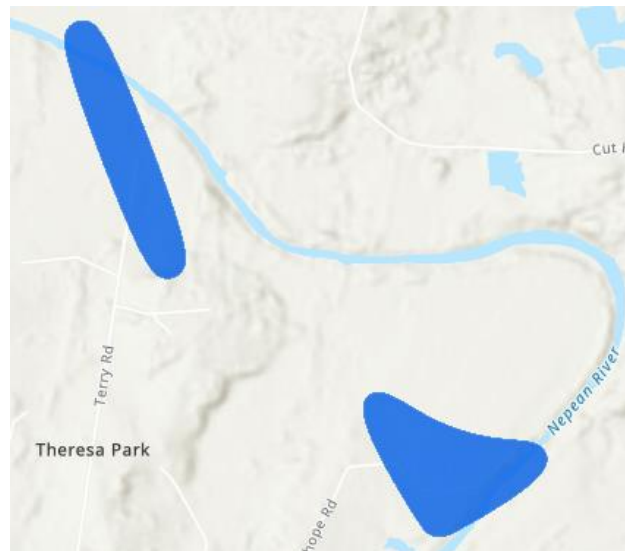
Premises have been isolated as water levels have impacted pumps and buildings alongside the river. Once water levels reduce we will be able to access the network for inspections and also ensure customers switchboards have not been impacted by water. We expect to gain access to this area when water levels at Camden Weir are below 3m.



Terry Rd and Stanhope Rd, Theresa Park – Customers Impacted – 8

Expected ETR: 6:00pm Thursday 7/7/2022

Premises have been isolated as water levels have impacted pumps and buildings alongside the river. Once water levels reduce we will be able to access the network for inspections and also ensure customers switchboards have not been impacted by water. We expect to gain access to this area when water levels at Camden Weir are below 3m.



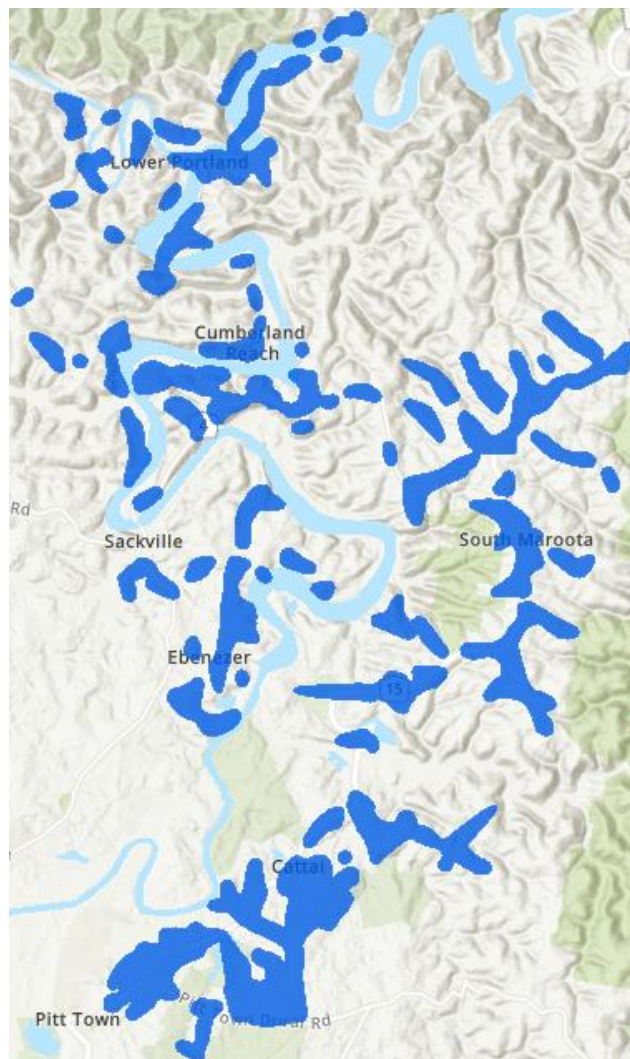
HAWKESBURY AREA

Cattai and Wisemans Zone Substation – Customers Impacted – 2589

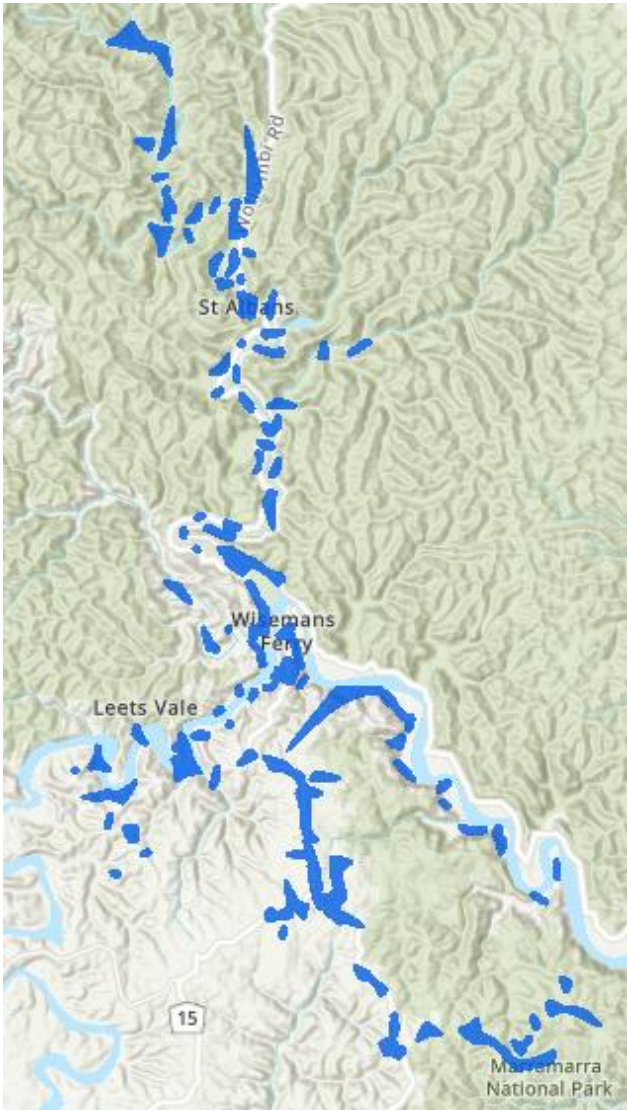
The major transmission line has been restored between Cattai and Wisemans Zone Substations. Feeder patrols are being conducted as flood waters recede. Approximately 1500 customers will be restored progressively on completion of patrols, however localised flooding will continue to impact majority of customers in these regions.

Patrol of the area required due to volume of water inundation to establish what network damage and road access has occurred. Detailed estimates to continue to be provided as more information is gathered.

Cattai



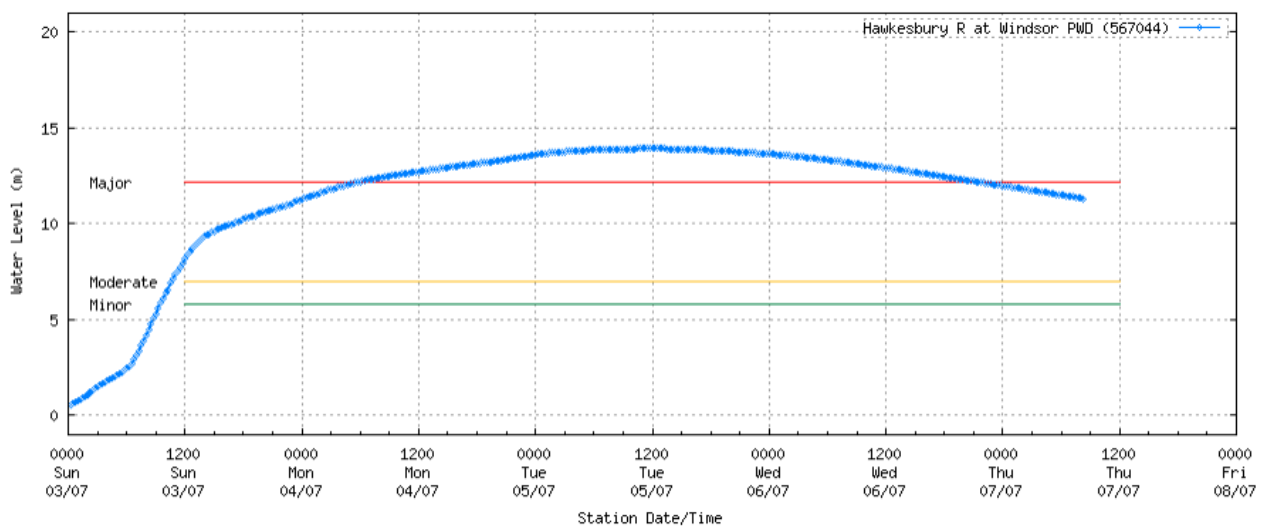
Wisemans Ferry



Carrington Rd, Londonderry – Customers Impacted - 119

Estimated ETR – 6:00pm Thursday 7/7/2022

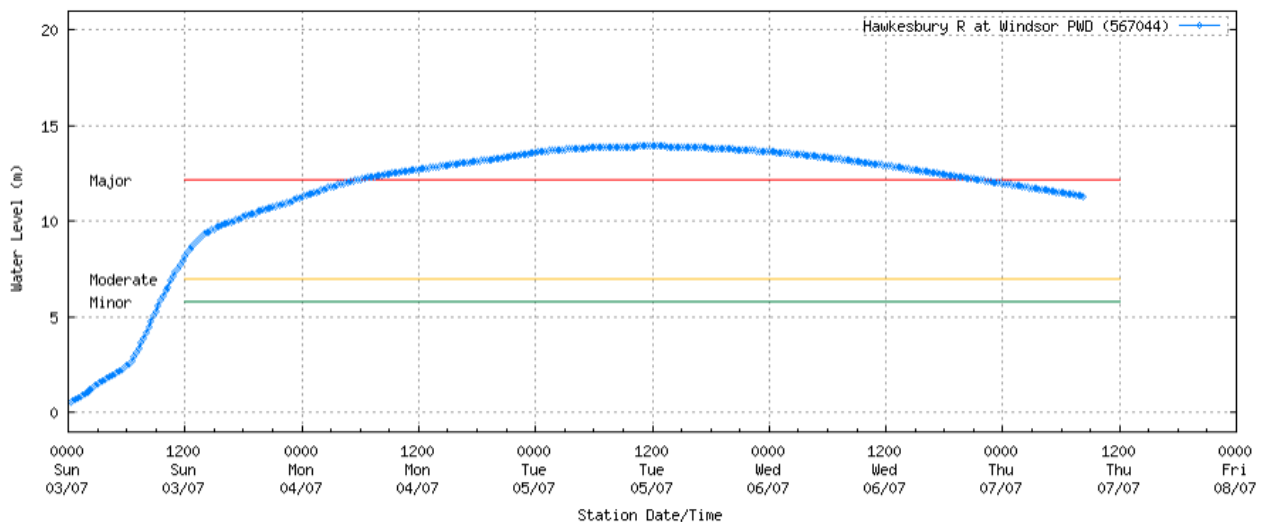
Premises are being inspected. Restoration of supply to safe installations is expected at above ETR. Customers who remain without supply after ETR should refer to “Safety Inspection Notice” and/or “Works Completed Information Sheet” for next steps.



The Driftway, Londonderry – Customers Impacted – 160

Expected ETR – 6:00pm Thursday 7/7/2022

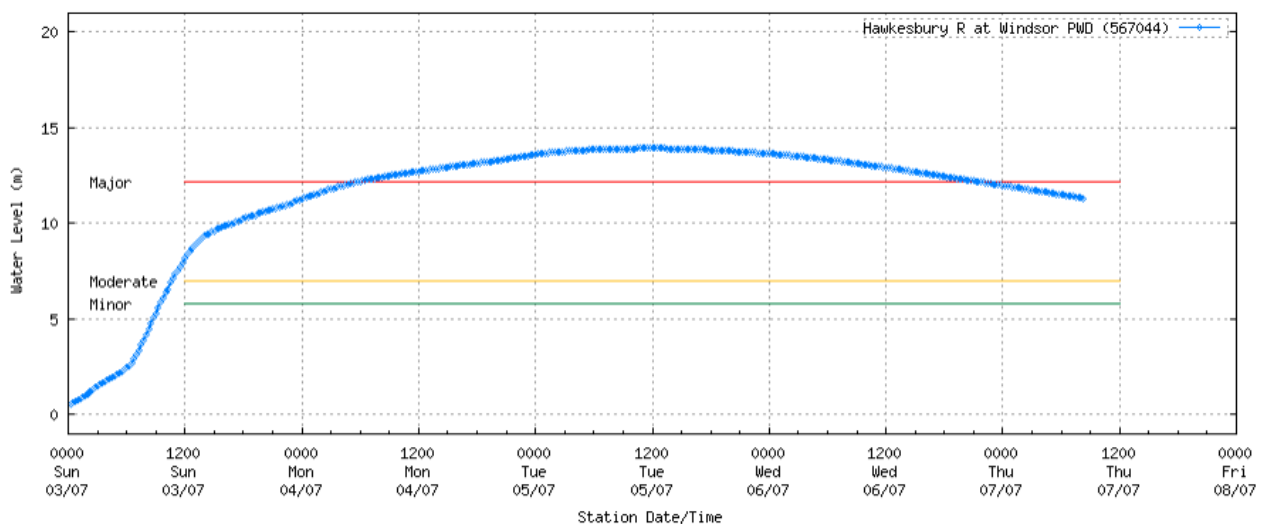
Premises are being inspected. Restoration of supply to safe installations is expected at above ETR. Customers who remain without supply after ETR should refer to “Safety Inspection Notice” and/or “Works Completed Information Sheet” for next steps. The northern end of Bennett Road may see extended ETR due to access issues.



Harris St / Mulgrave Rd, Mulgrave – Customers impacted – 50

Expected ETR – 6:00pm Friday 8/7/2022

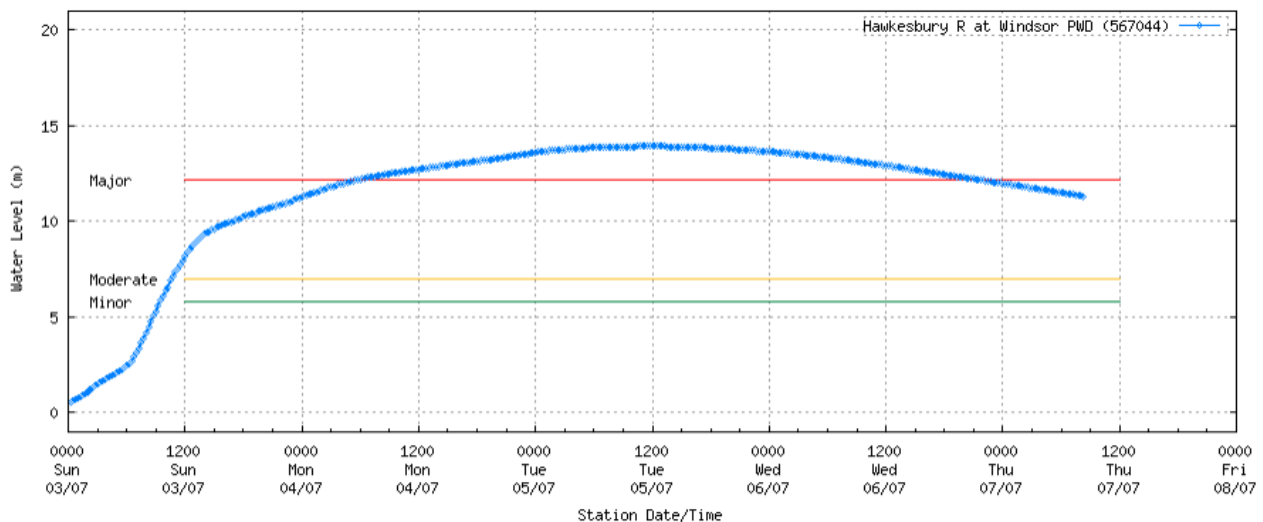
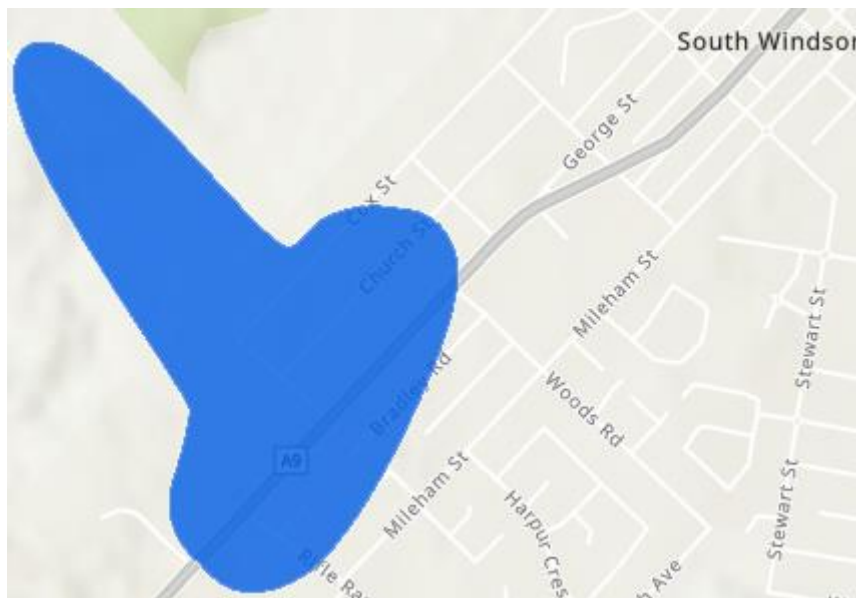
Premises are being inspected. Restoration of supply to safe installations is expected at above ETR. Customers who remain without supply after ETR should refer to “Safety Inspection Notice” and/or “Works Completed Information Sheet” for next steps.



George St, South Windsor – Customers Impacted – 79

Estimated ETR – 6:00pm Friday 8/7/2022

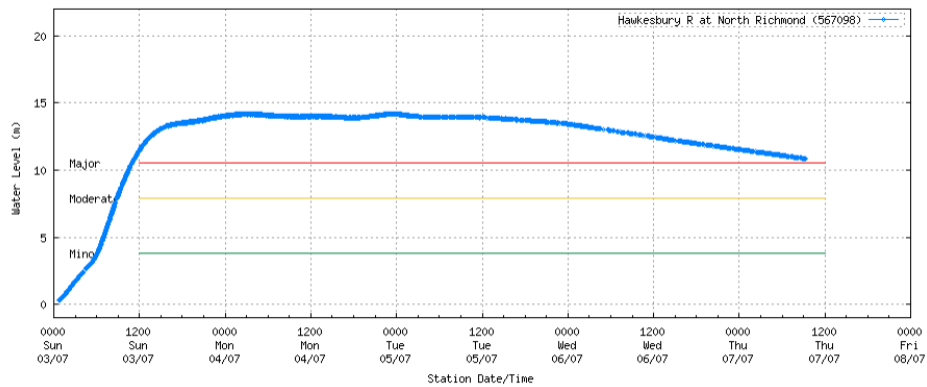
Premises have been isolated as water levels have impacted electricity infrastructure supplying the area. Once water levels reduce we will be able to access the network for inspections and also ensure customers switchboards have not been impacted by water. We expect to gain access to this area when water levels at Windsor Bridge are below 10m.



Terrace Rd, North Richmond – Customers Impacted – 17

Estimated ETR – 6:00pm Friday 8/7/2022

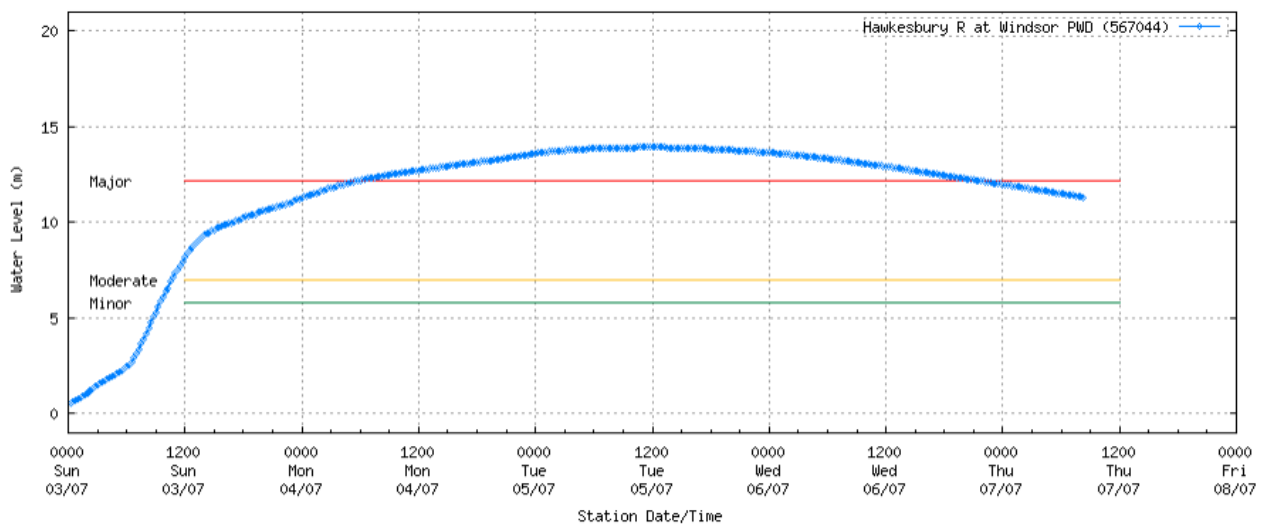
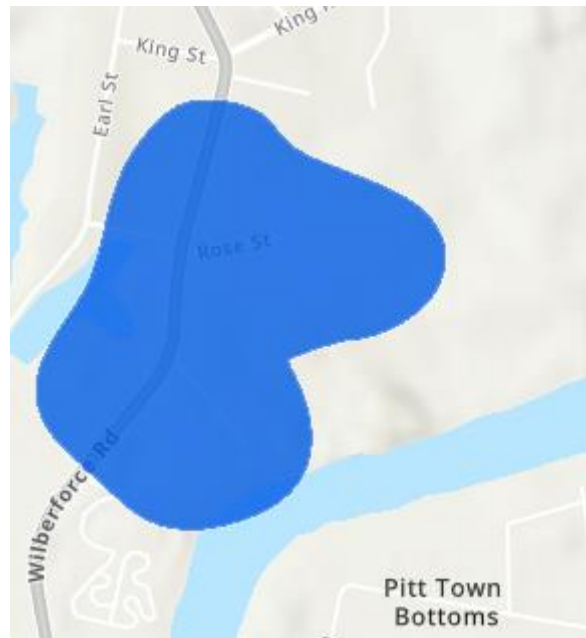
Premises have been isolated as water levels have impacted electricity infrastructure supplying the area. Once water levels reduce we will be able to access the network for inspections and also ensure customers switchboards have not been impacted by water. We expect to gain access to this area when water levels at North Richmond Bridge are below 10m.



Wilberforce Rd, Wilberforce – Customers Impacted – 51

Estimated ETR – 6:00pm Friday 8/7/2022

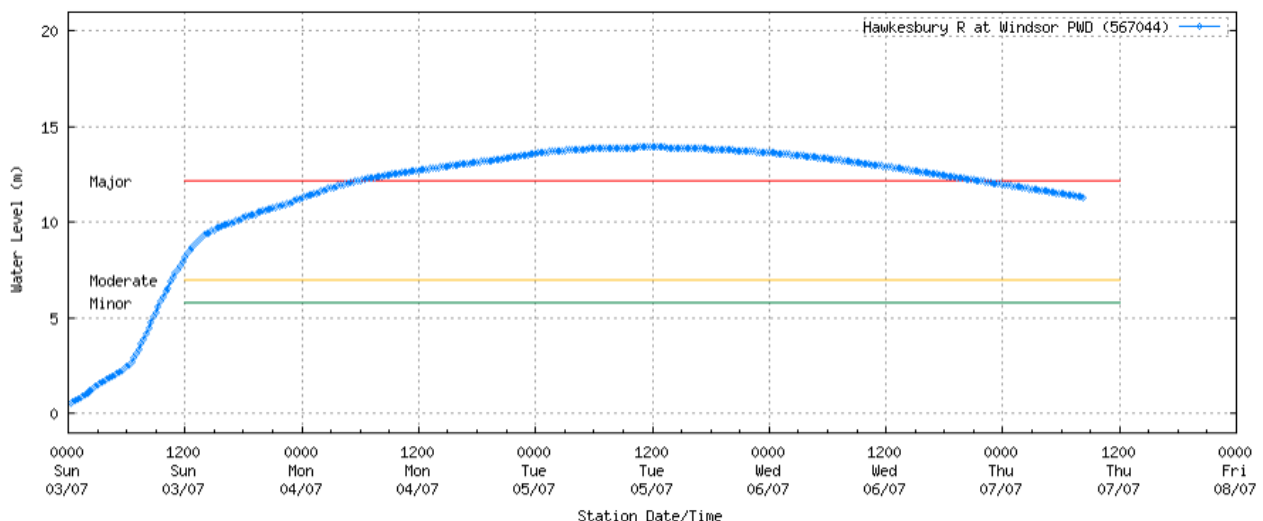
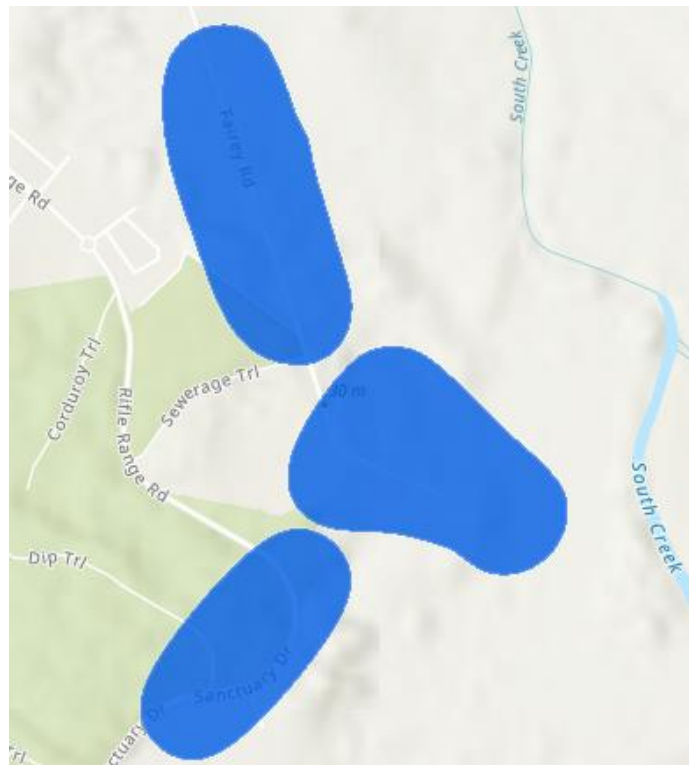
Premises have been isolated as water levels have impacted electricity infrastructure supplying the area. Once water levels reduce we will be able to access the network for inspections and also ensure customers switchboards have not been impacted by water. We expect to gain access to this area when water levels at Windsor Bridge are below 10m.



Sanctuary Dr, Windsor Downs – Customers Impacted – 28

Estimated ETR – 6:00pm Friday 8/7/2022

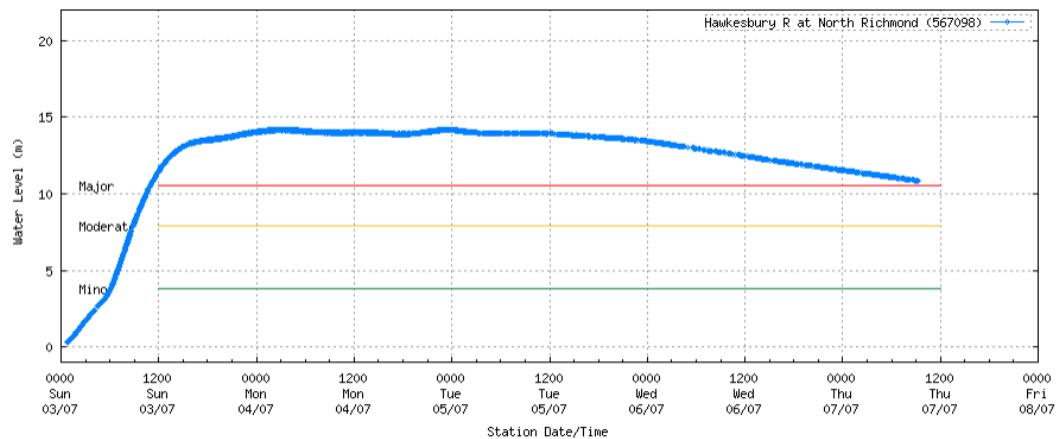
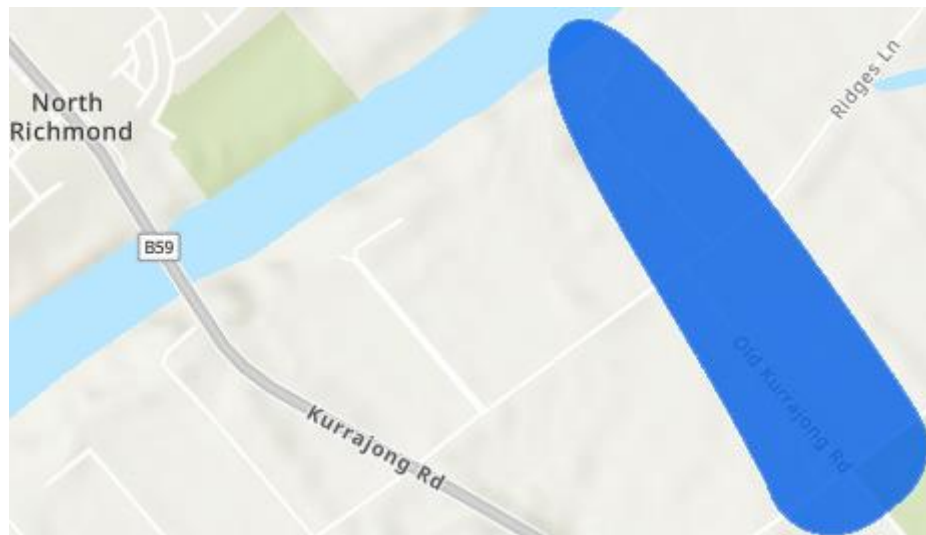
Premises have been isolated as water levels have impacted electricity infrastructure supplying the area. Once water levels reduce we will be able to access the network for inspections and also ensure customers switchboards have not been impacted by water. We expect to gain access to this area when water levels at Windsor Bridge are below 8m. A network fault also requires this area to be patrolled prior to energisation.



Old Kurrajong Rd, Richmond – Customers Impacted – 6

Estimated ETR – 6:00pm Saturday 9/7/2022

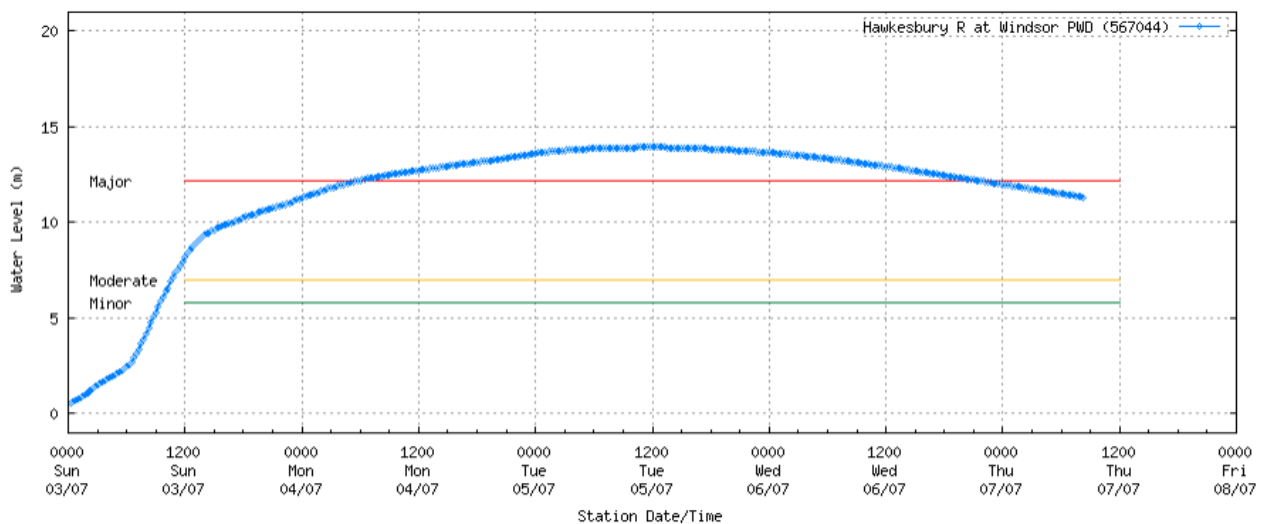
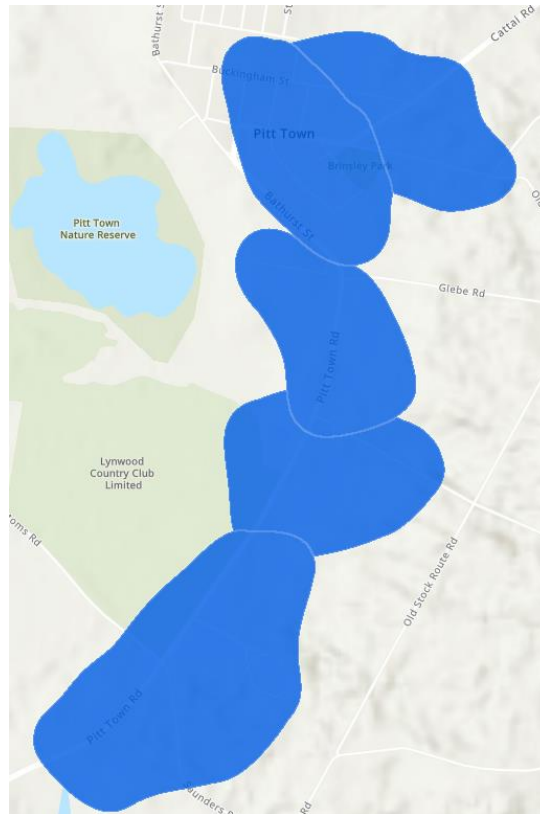
Premises have been isolated as water levels have impacted electricity infrastructure supplying the area. Once water levels reduce we will be able to access the network for inspections and also ensure customers switchboards have not been impacted by water. We expect to gain access to this area when water levels at North Richmond Bridge are below 10m.



Pitt Town Rd, Pitt Town – Customers impacted – 158

Expected ETR – 6:00pm Saturday 9/7/2022

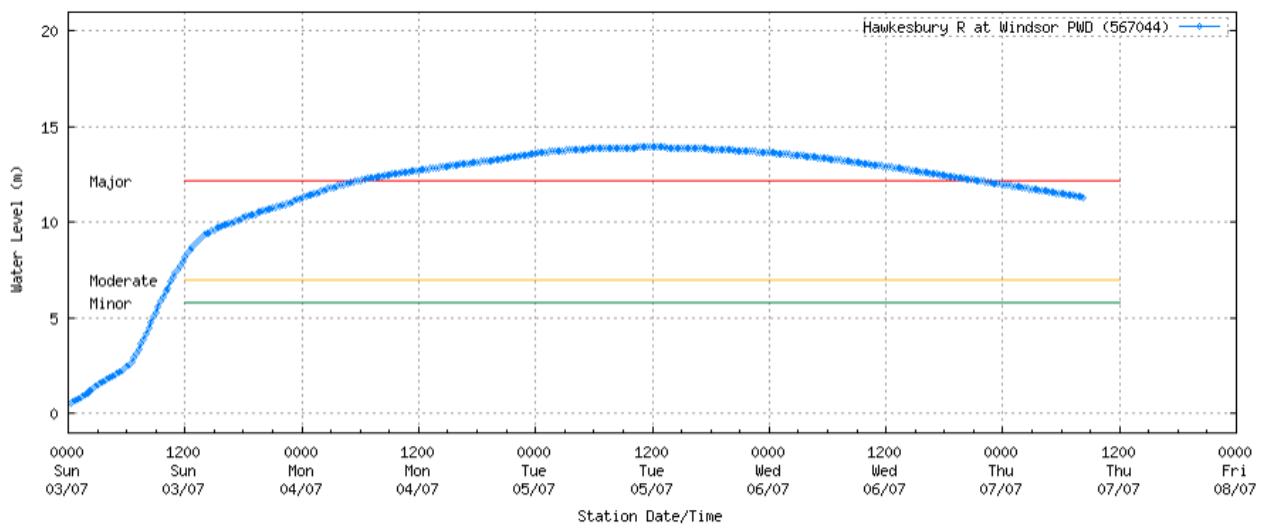
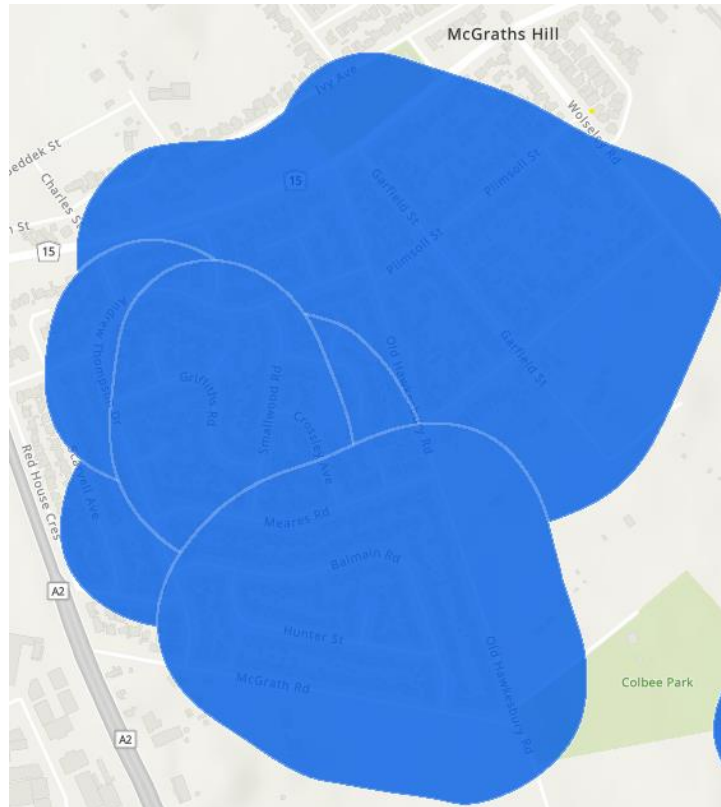
Premises have been isolated as water levels have impacted electricity infrastructure supplying the area. Once water levels reduce we will be able to access the network for inspections and also ensure customers switchboards have not been impacted by water. We expect to gain access to this area when water levels at Windsor Bridge are below 8m.



McGraths Hill – Customers impacted – 433

Expected ETR – 6:00pm Saturday 9/7/2022

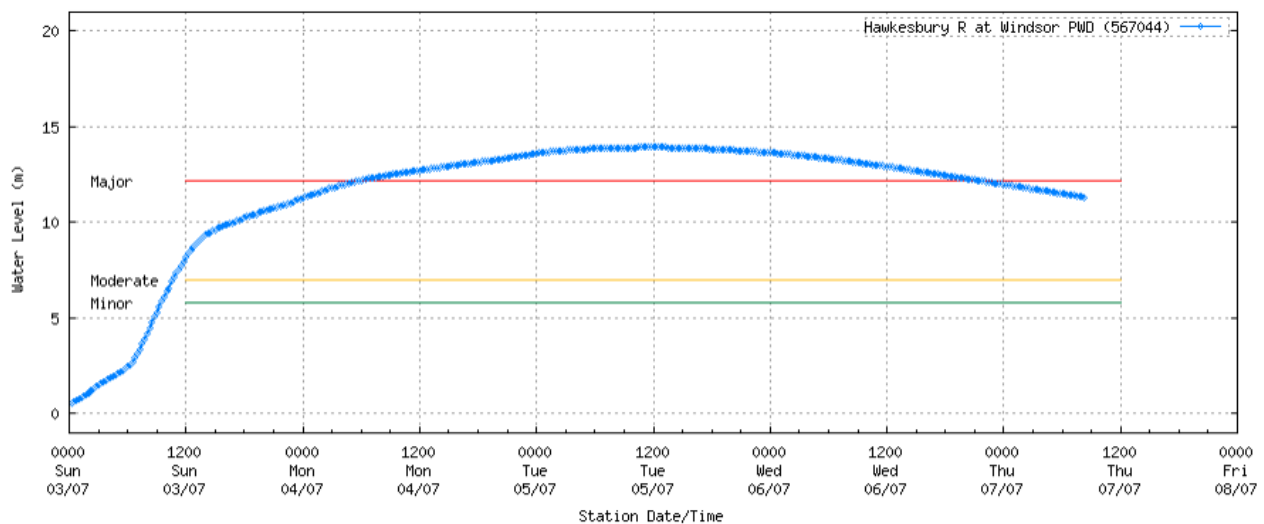
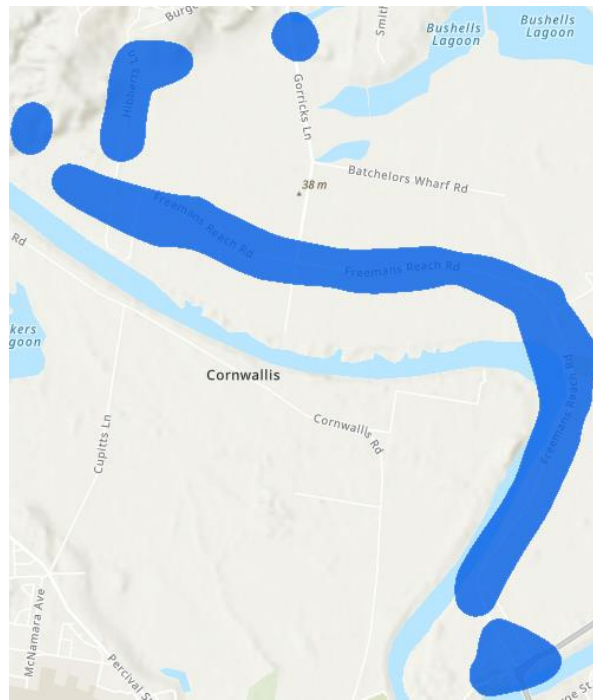
Premises have been isolated as water levels have impacted electricity infrastructure supplying the area. Once water levels reduce we will be able to access the network for inspections and also ensure customers switchboards have not been impacted by water. We expect to gain access to this area progressively when water levels at Windsor Bridge are between 6-10m.



Freemans Reach Rd – Customers impacted – 115

Expected ETR – 6:00pm Friday 8/7/2022

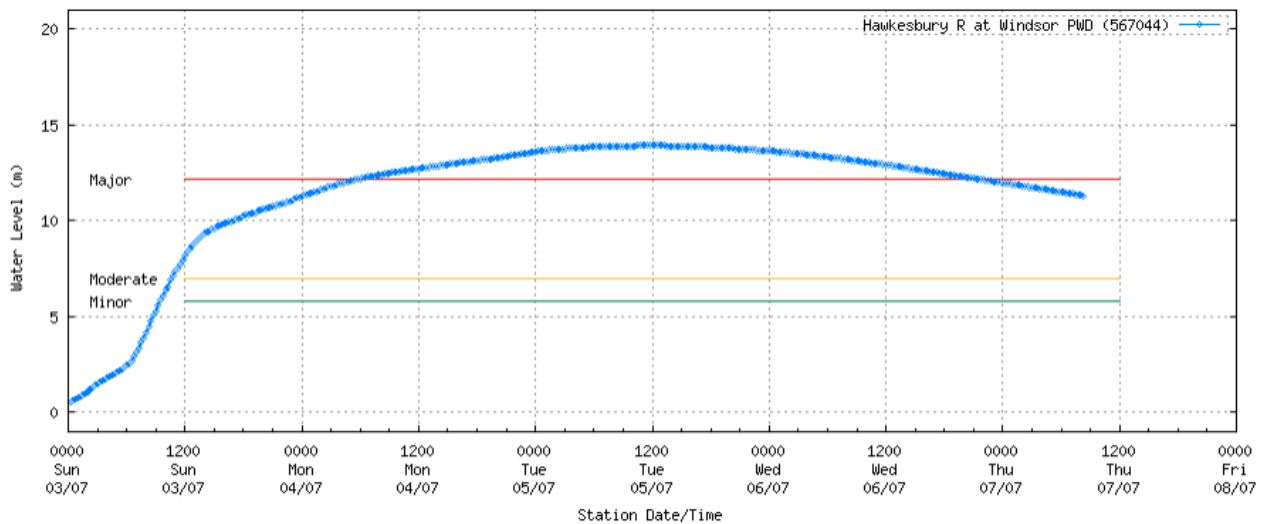
Premises have been isolated as water levels have impacted electricity infrastructure supplying the area. Once water levels reduce we will be able to access the network for inspections and also ensure customers switchboards have not been impacted by water. We expect to gain access to this area when water levels at Windsor Bridge are below 8m.



Pitt Town – Customers impacted – 1003

Expected ETR – 12:00pm Friday 8/7/2022

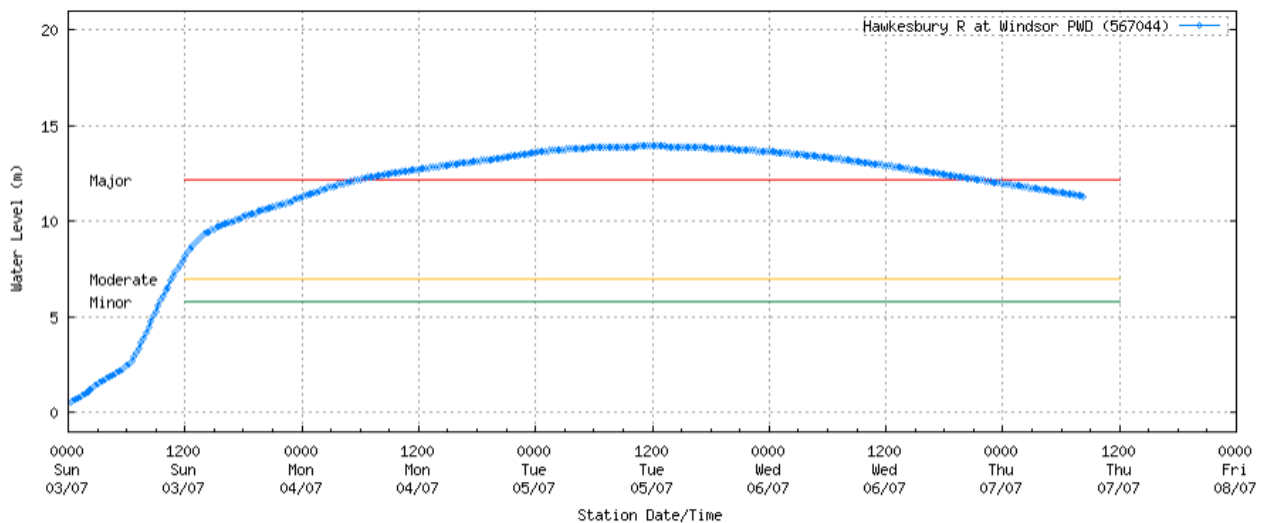
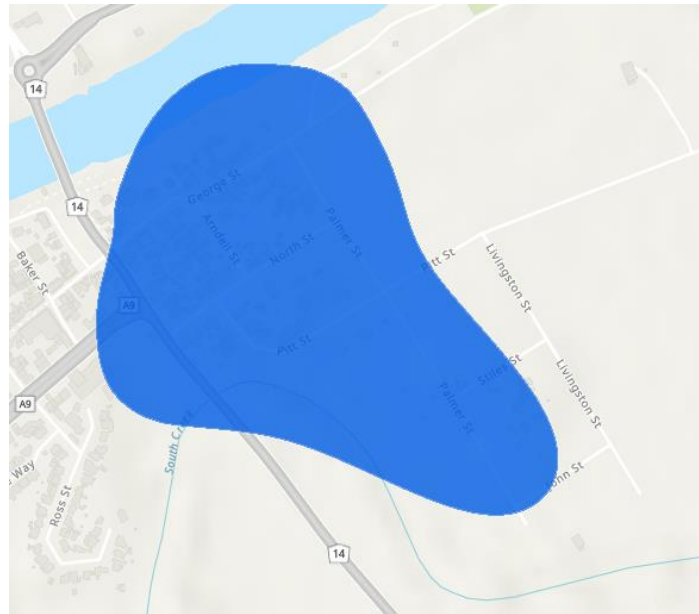
Premises have been isolated as water levels have impacted electricity infrastructure supplying the area. Once water levels reduce we will be able to access the network for inspections and also ensure customers switchboards have not been impacted by water. We expect to gain access to this area when water levels at Windsor Bridge are below 10m.



George St, Windsor – Customers impacted – 69

Expected ETR – 6:00pm Saturday 9/7/2022

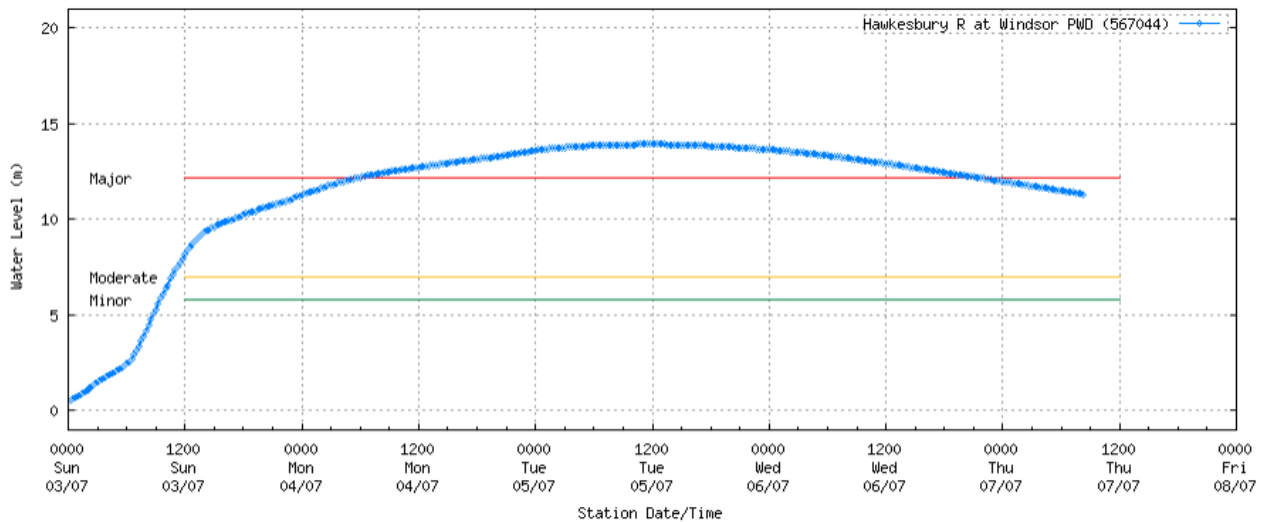
Premises have been isolated as water levels have impacted electricity infrastructure supplying the area. Once water levels reduce we will be able to access the network for inspections and also ensure customers switchboards have not been impacted by water. We expect to gain access to this area when water levels at Windsor Bridge are below 8m.



The Terrace, Windsor – Customers impacted – 10

Expected ETR – 6:00pm Friday 8/7/2022

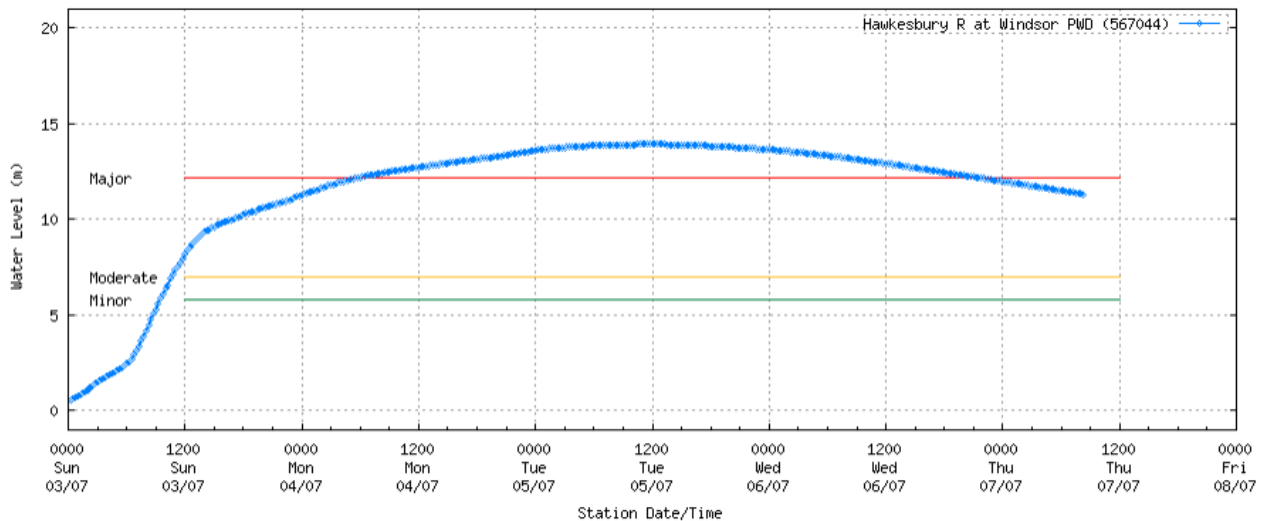
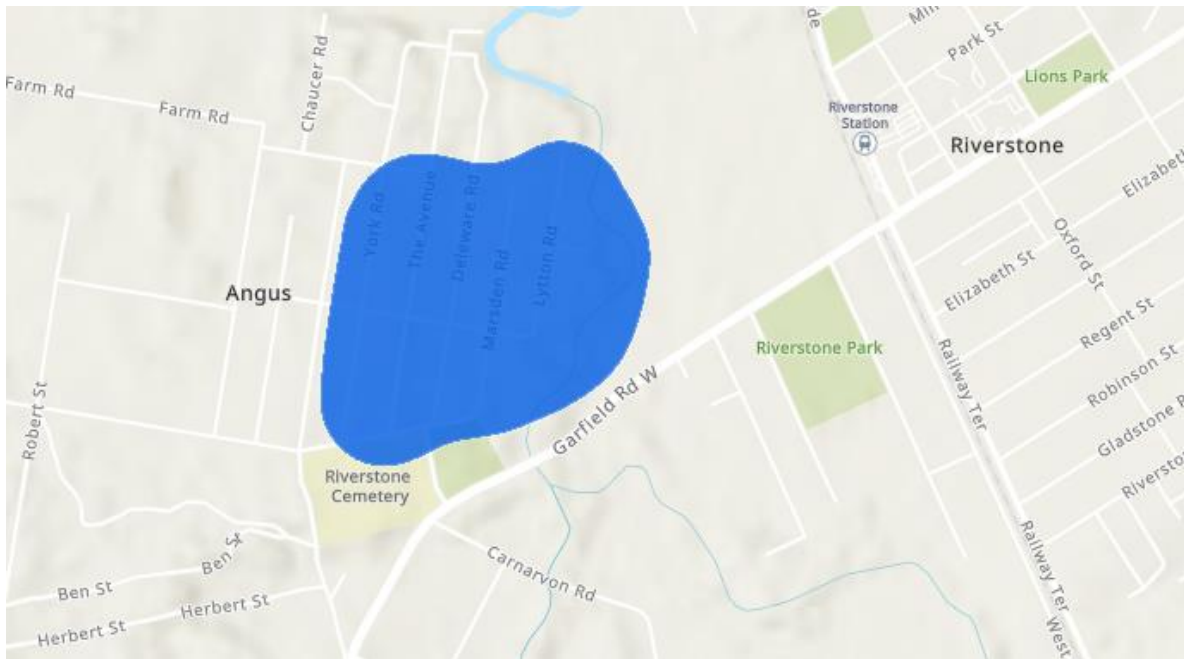
Premises have been isolated as water levels have impacted electricity infrastructure supplying the area. Once water levels reduce we will be able to access the network for inspections and also ensure customers switchboards have not been impacted by water. We expect to gain access to this area when water levels at Windsor Bridge are below 10m.



Deleware Rd, Riverstone – Customers impacted – 32

Expected ETR – 6:00pm Friday 8/7/2022

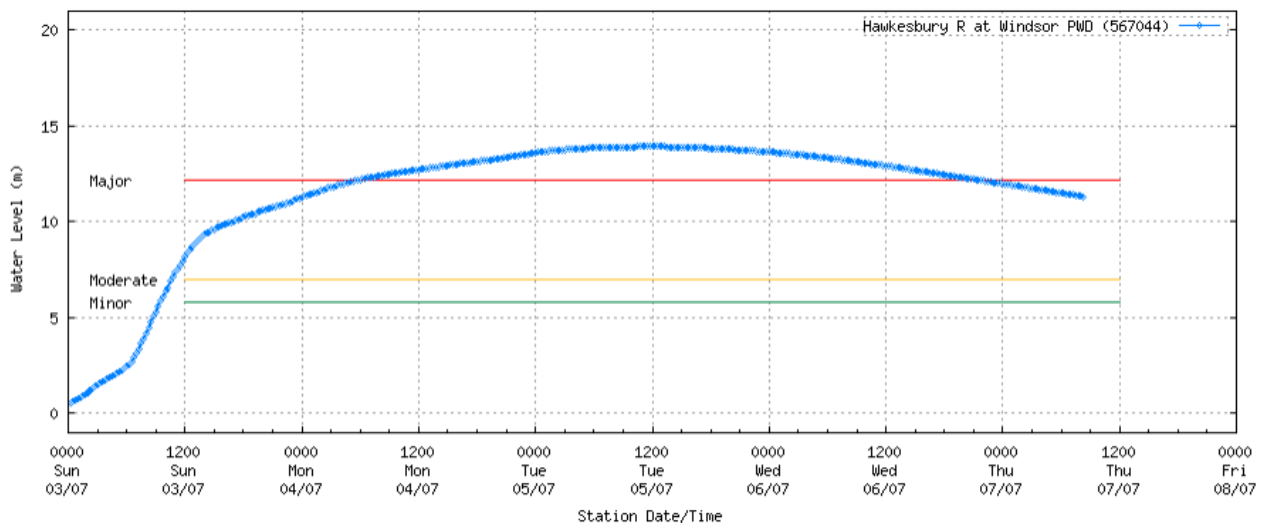
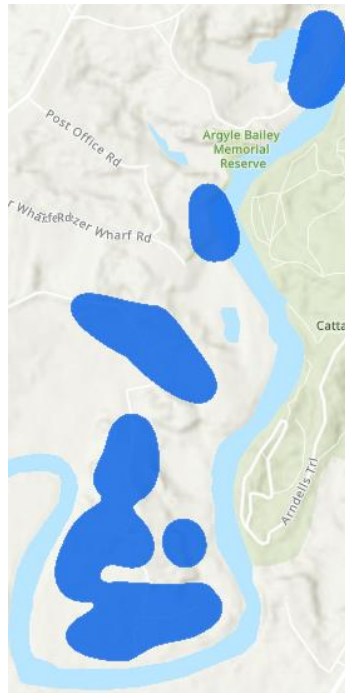
Premises have been isolated as water levels have impacted electricity infrastructure supplying the area. Once water levels reduce we will be able to access the network for inspections and also ensure customers switchboards have not been impacted by water. We expect to gain access to this area when water levels at Windsor Bridge are below 10m.



Coromandel Rd/ Grono Farm, Ebenezer – Customers impacted – 55

Expected ETR – 6:00pm Sunday 10/7/2022

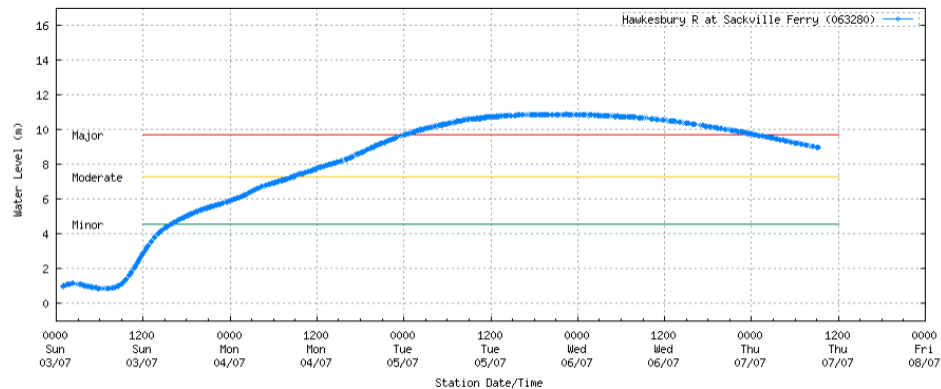
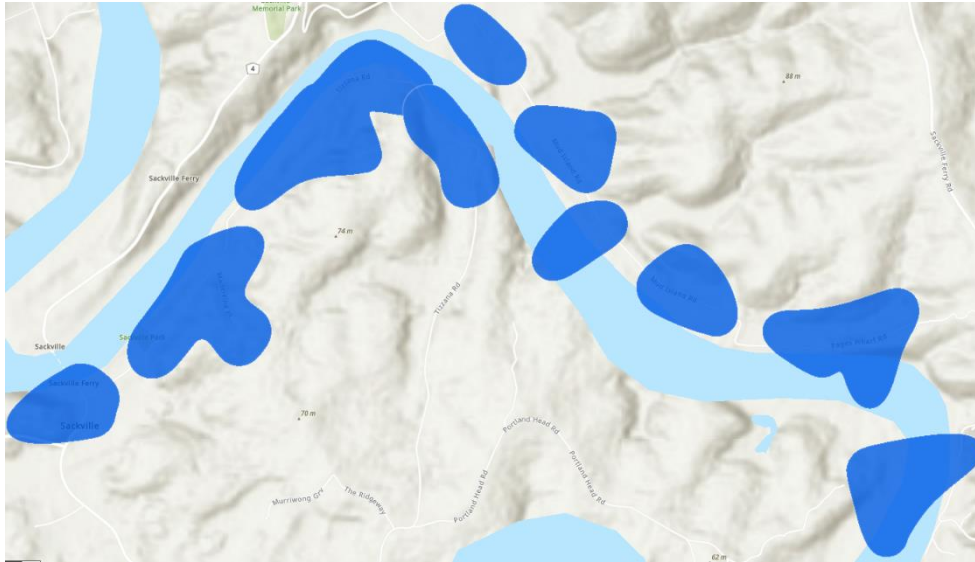
Premises have been isolated as water levels have impacted electricity infrastructure supplying the area. Once water levels reduce we will be able to access the network for inspections and also ensure customers switchboards have not been impacted by water. We expect to gain access to this area when water levels at Windsor Bridge are below 7m



Tizzana Rd/ Mud Island Rd, Sackville – Customers impacted – 108

Expected ETR – 6:00pm Sunday 10/7/2022

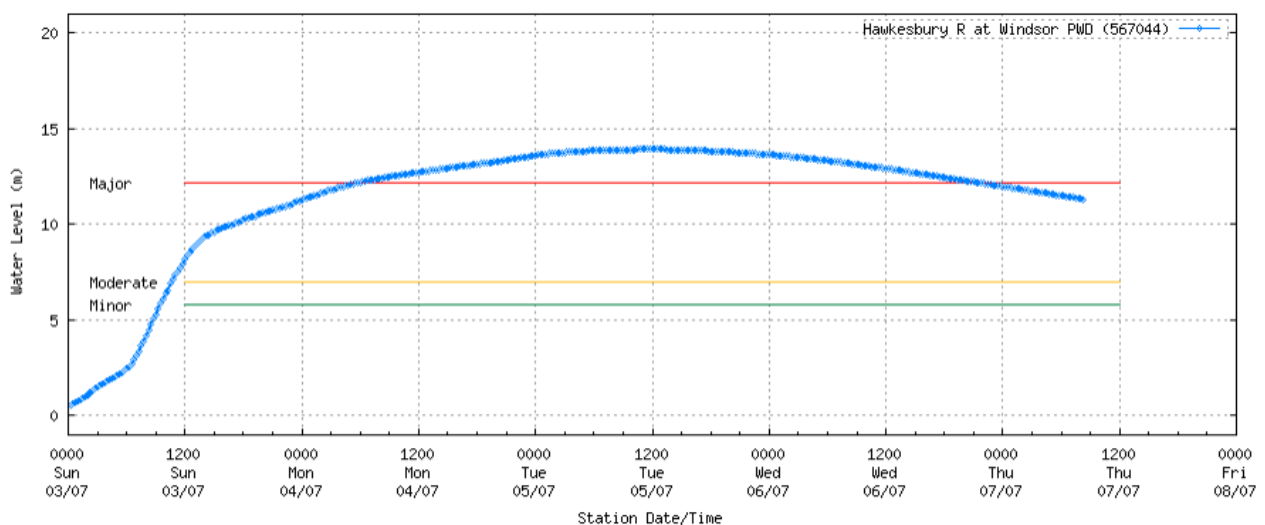
Premises have been isolated as water levels have impacted electricity infrastructure supplying the area. Once water levels reduce we will be able to access the network for inspections and also ensure customers switchboards have not been impacted by water. We expect to gain access to this area when water levels at Sackville Ferry are below 4m.



Putty Rd – Customers impacted – 13

Expected ETR – 6:00pm Friday 8/7/2022

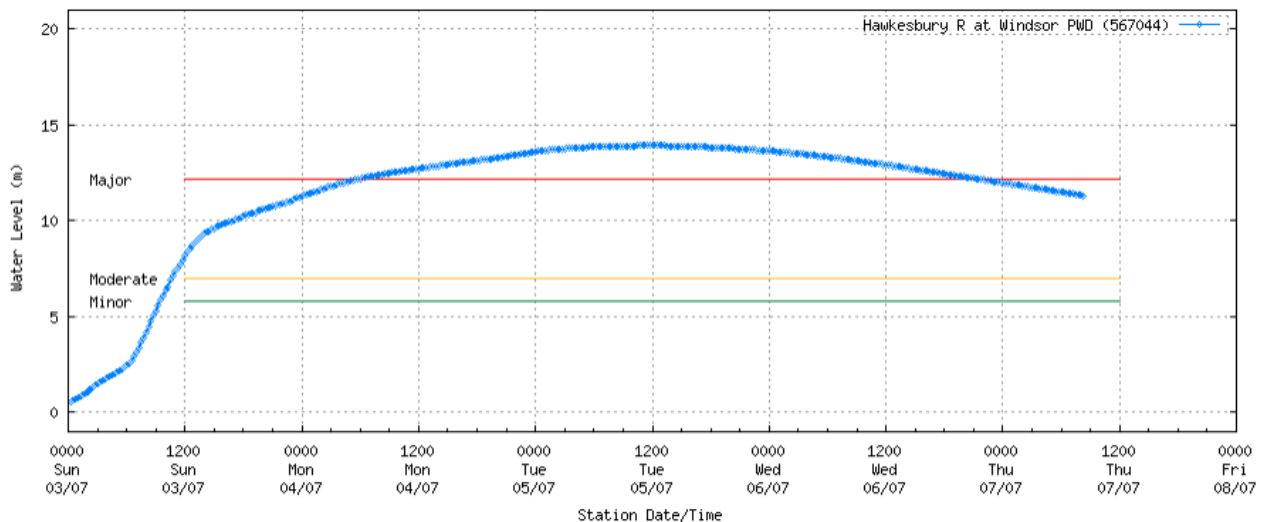
Premises have been isolated as water levels have impacted electricity infrastructure supplying the area. Once water levels reduce we will be able to access the network for inspections and also ensure customers switchboards have not been impacted by water. We expect to gain access to this area when water levels at Windsor Bridge are below 8m.



Pitt Town Ferry Rd, Wilberforce – Customers impacted – 26

Expected ETR – 6:00pm Sunday 10/7/2022

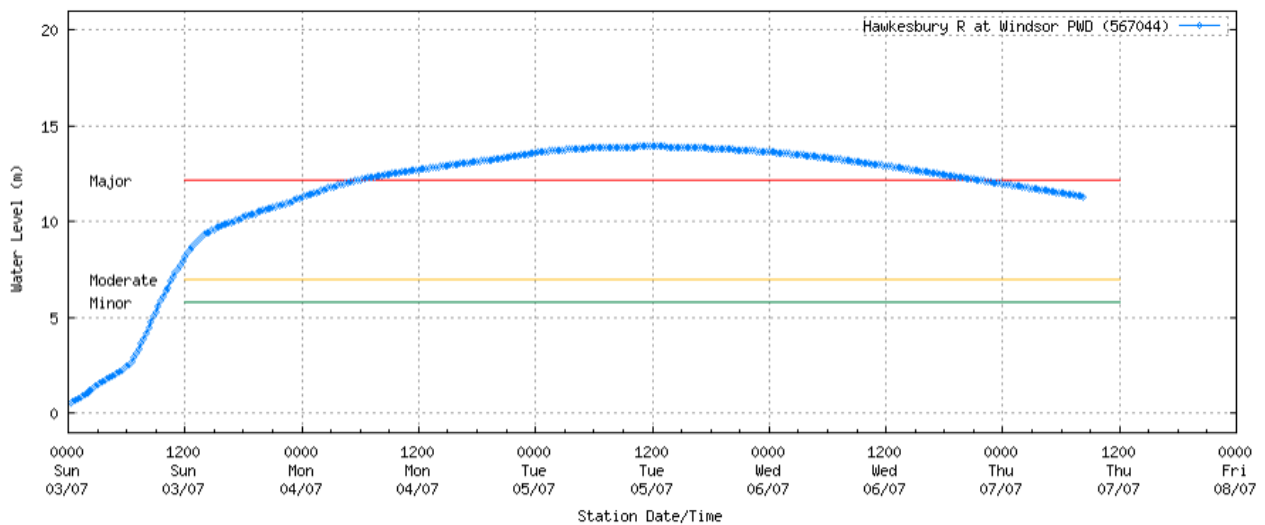
Premises have been isolated as water levels have impacted electricity infrastructure supplying the area. Once water levels reduce we will be able to access the network for inspections and also ensure customers switchboards have not been impacted by water. We expect to gain access to this area when water levels at Windsor Bridge are below 4m.



Newman Rd, Maraylya – Customers impacted – 7

Expected ETR – 6:00pm Sunday 10/7/2022

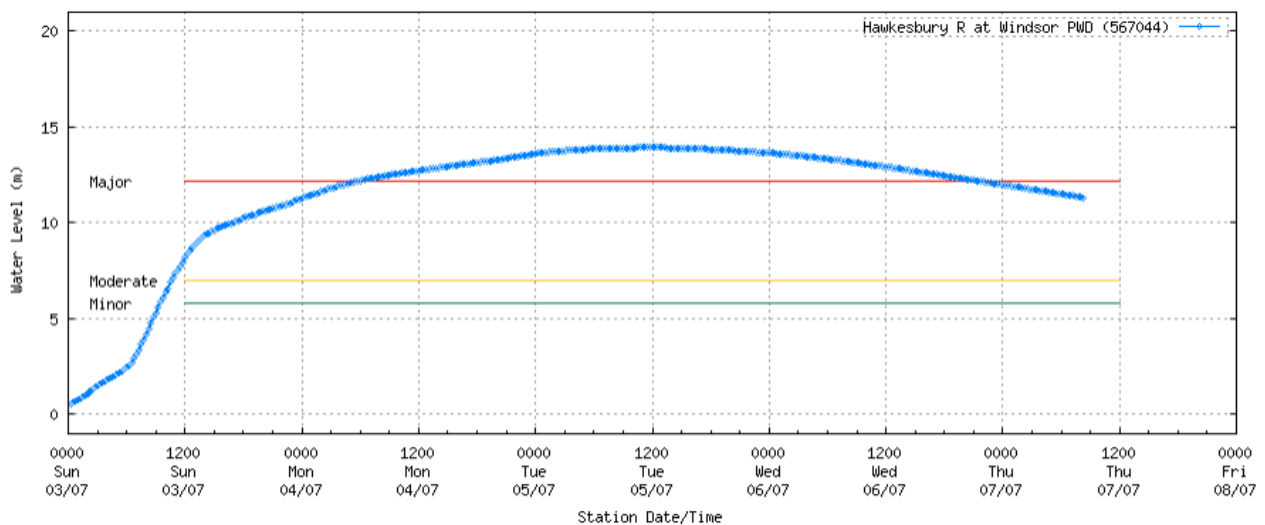
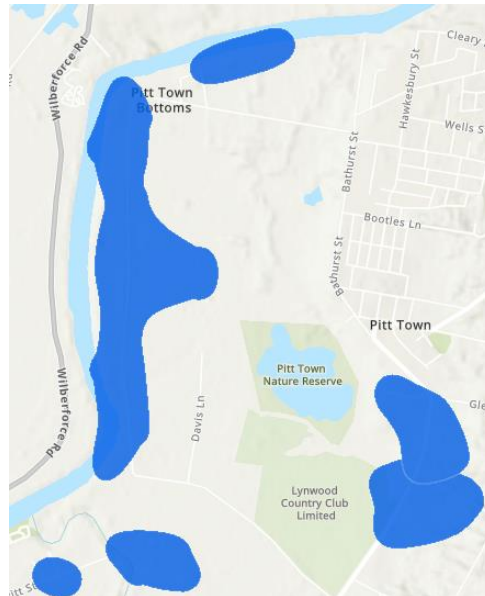
Premises have been isolated as water levels have impacted electricity infrastructure supplying the area. Once water levels reduce we will be able to access the network for inspections and also ensure customers switchboards have not been impacted by water. We expect to gain access to this area when water levels at Windsor Bridge are below 4m



Pitt Town Bottoms – Customers impacted – 93

Expected ETR – 6:00pm Sunday 10/7/2022

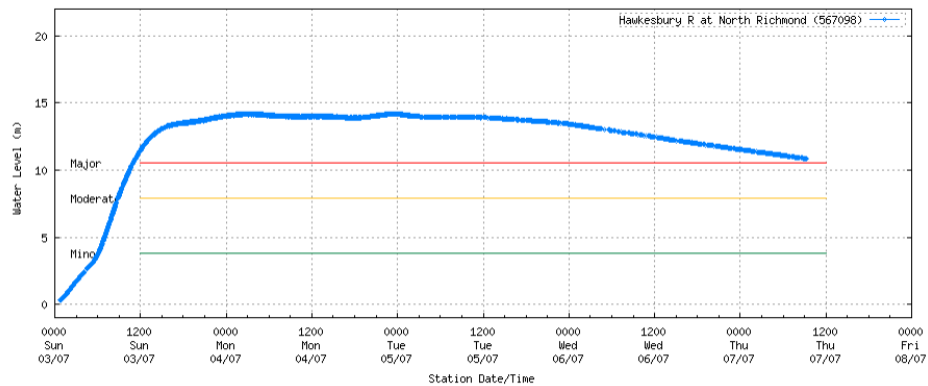
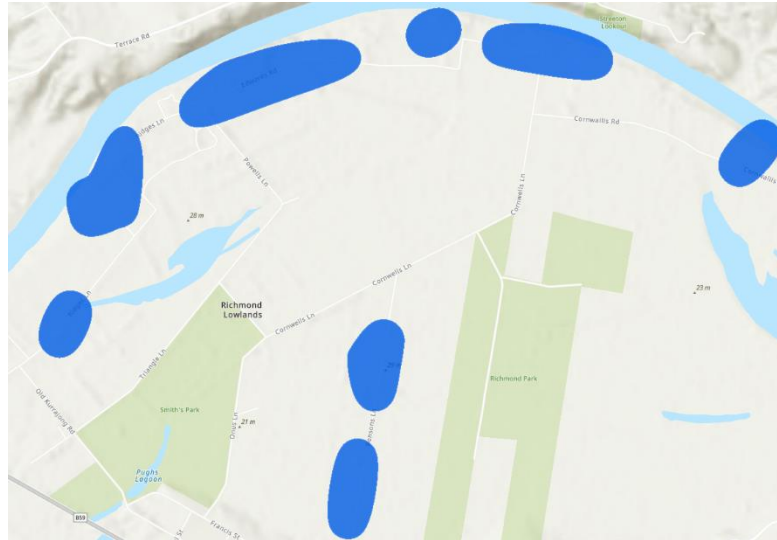
Premises have been isolated as water levels have impacted electricity infrastructure supplying the area. Once water levels reduce we will be able to access the network for inspections and also ensure customers switchboards have not been impacted by water. We expect to gain access to this area when water levels at Windsor Bridge are below 5m



Richmond Lowlands – Customers impacted – 54

Expected ETR – 6:00pm Friday 8/7/2022

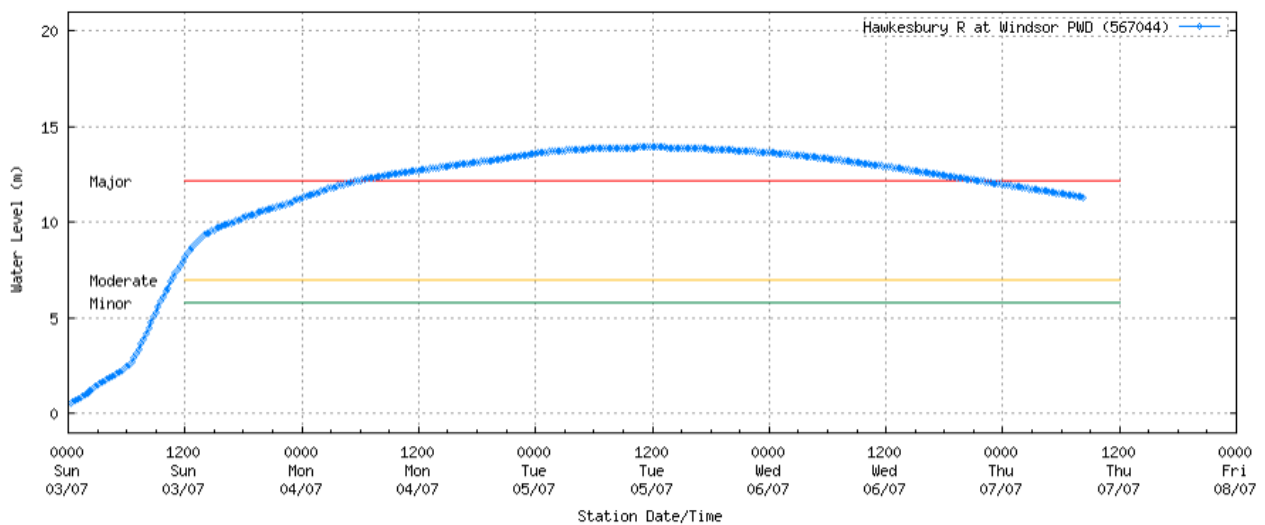
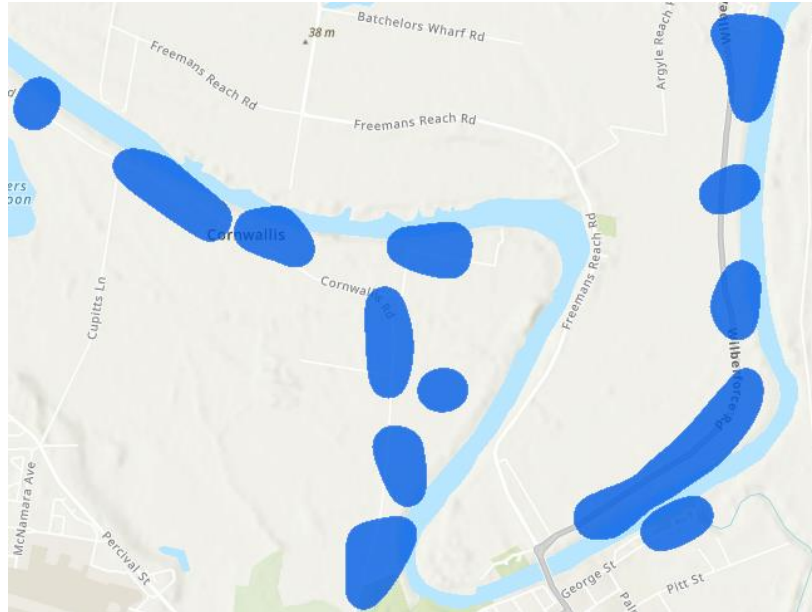
Premises have been isolated as water levels have impacted electricity infrastructure supplying the area. Once water levels reduce we will be able to access the network for inspections and also ensure customers switchboards have not been impacted by water. We expect to gain access to this area when water levels at North Richmond Bridge are below 6m



Cornwallis Rd/ Wilberforce Rd – Customers impacted – 36

Expected ETR – 6:00pm Saturday 9/7/2022

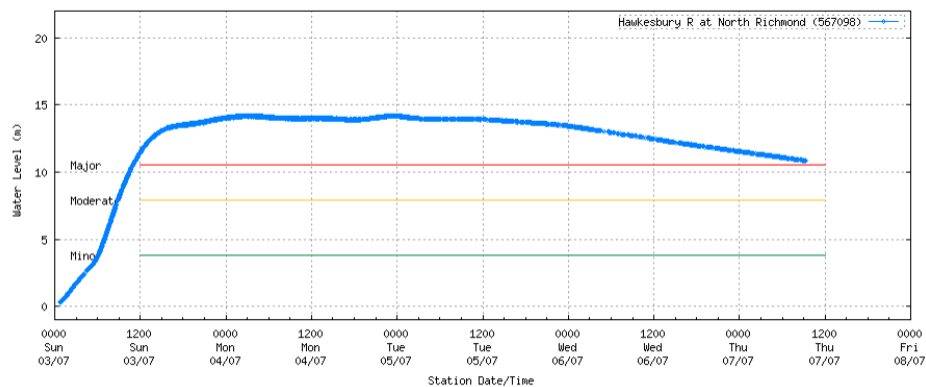
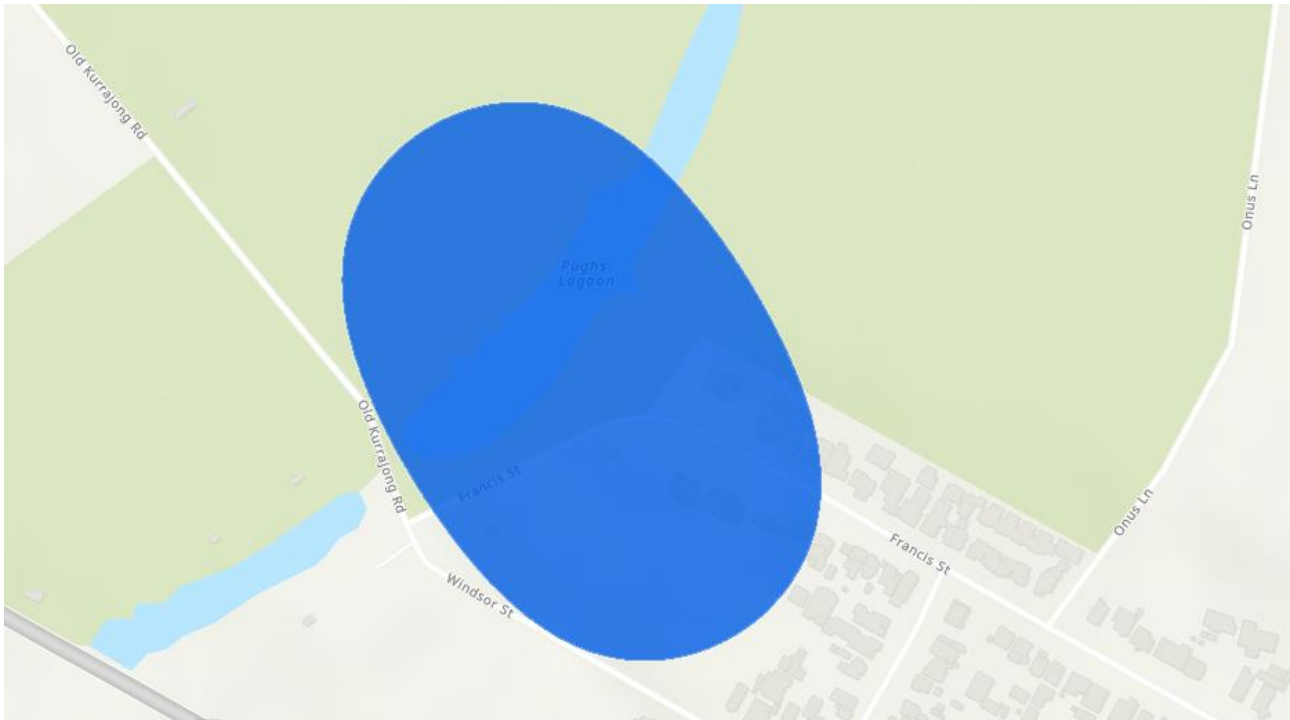
Premises have been isolated as water levels have impacted electricity infrastructure supplying the area. Once water levels reduce we will be able to access the network for inspections and also ensure customers switchboards have not been impacted by water. We expect to gain access to this area when water levels at Windsor Bridge are below 5m



Francis St, Richmond – Customers impacted – 2

Expected ETR – 6:00pm Saturday 9/7/2022

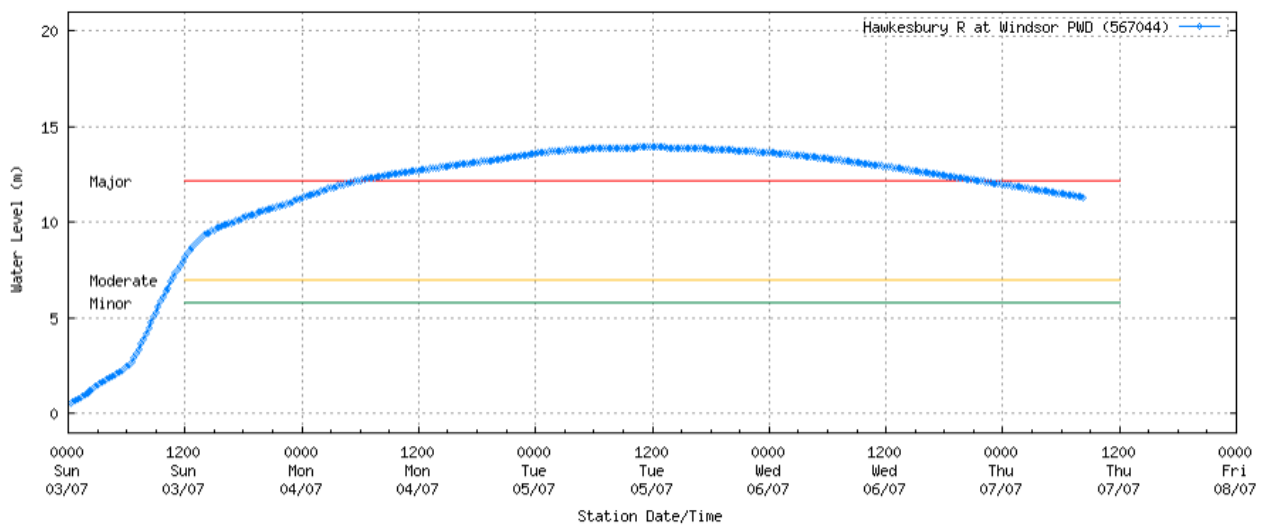
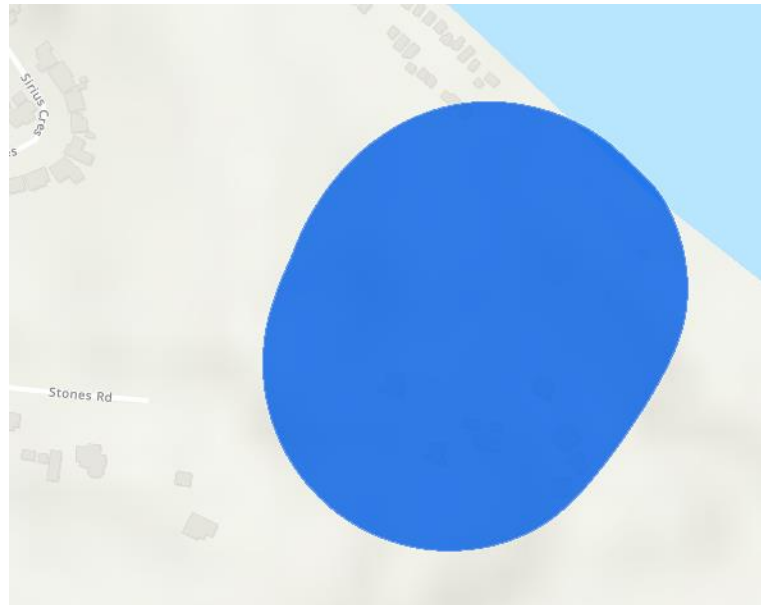
Premises have been isolated as water levels have impacted electricity infrastructure supplying the area. Once water levels reduce we will be able to access the network for inspections and also ensure customers switchboards have not been impacted by water. We expect to gain access to this area when water levels at North Richmond Bridge are below 6m.



Stones Rd, Ebenezer – Customers Impacted – 11

Expected ETR – 6:00pm Sunday 10/7/2022

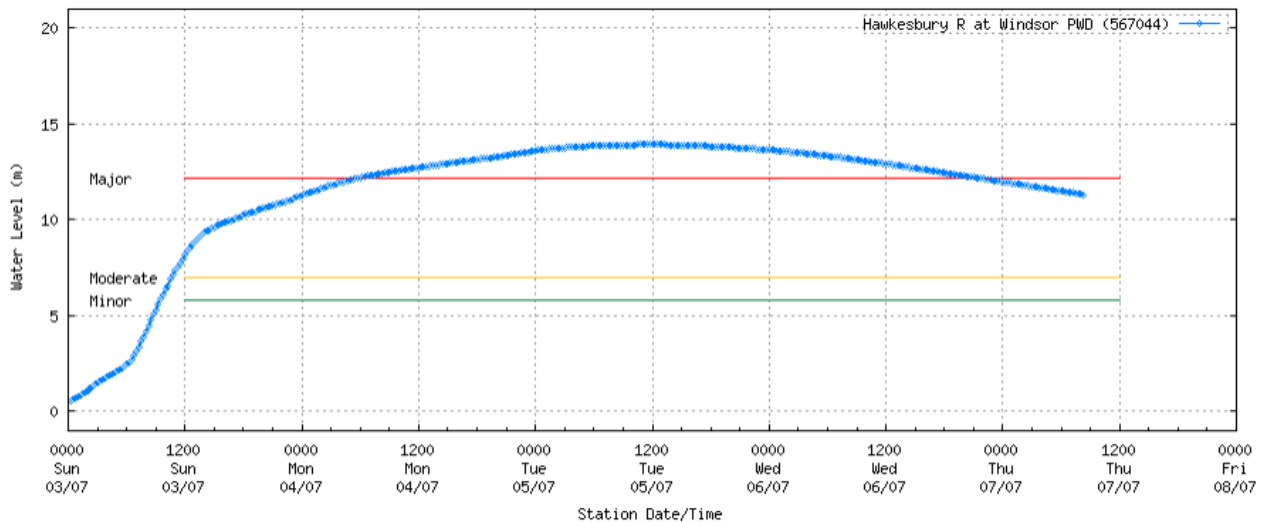
Premises have been isolated as water levels have impacted electricity infrastructure supplying the area. Once water levels reduce we will be able to access the network for inspections and also ensure customers switchboards have not been impacted by water. We expect to gain access to this area when water levels at Windsor Bridge are below 5m.



Level Crossing Rd, Vineyard– Customers impacted - 1

Expected ETR – 6:00pm Saturday 9/7/2022

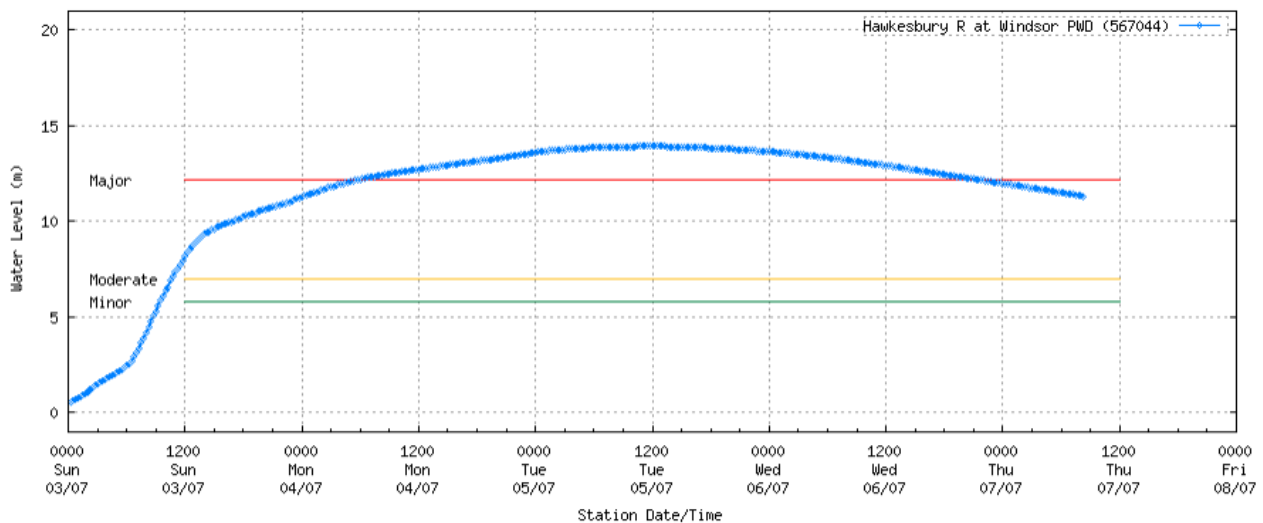
Premises have been isolated as water levels have impacted electricity infrastructure supplying the area. Once water levels reduce we will be able to access the network for inspections and also ensure customers switchboards have not been impacted by water. We expect to gain access to this area when water levels at Windsor Bridge are below 6m.



McClymonts Rd, Kenthurst – Customers impacted - 3

Expected ETR – 6:00pm Saturday 9/7/2022

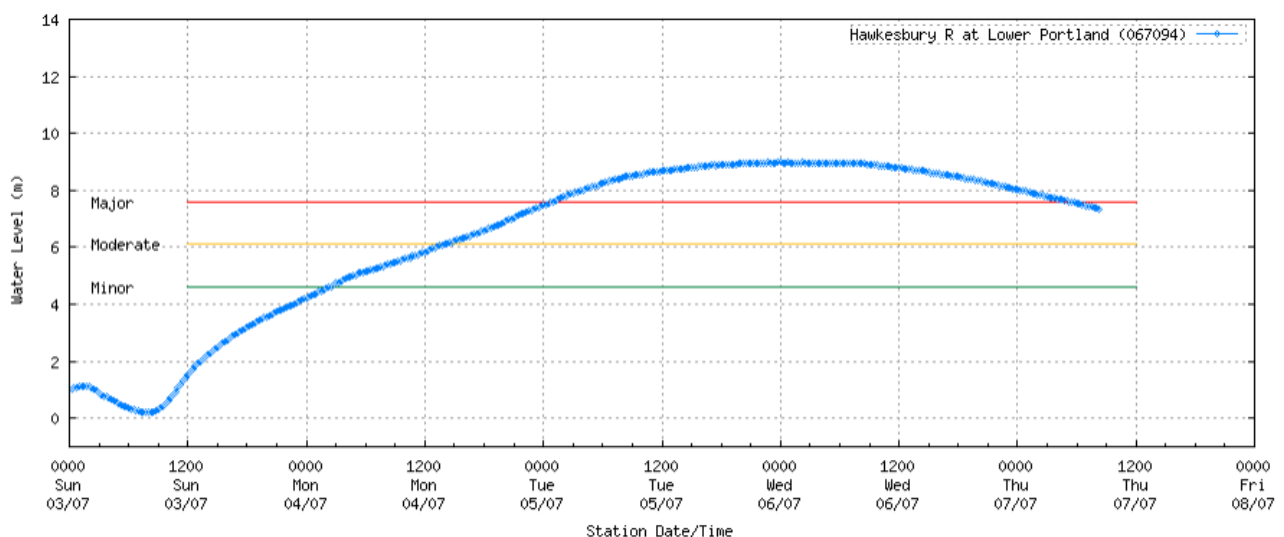
Premises have been isolated as water levels have impacted electricity infrastructure supplying the area. Once water levels reduce we will be able to access the network for inspections and also ensure customers switchboards have not been impacted by water. We expect to gain access to this area when water levels at Windsor Bridge are below 6m



River Rd, Lower Portland– Customers impacted - 19

Expected ETR – 6:00pm Monday 11/7/2022

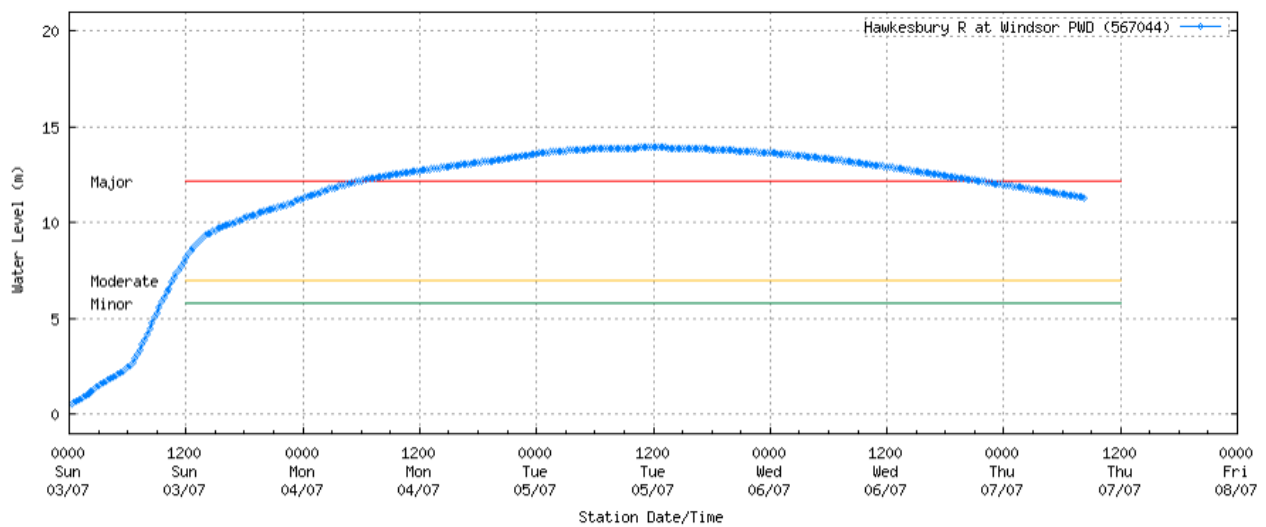
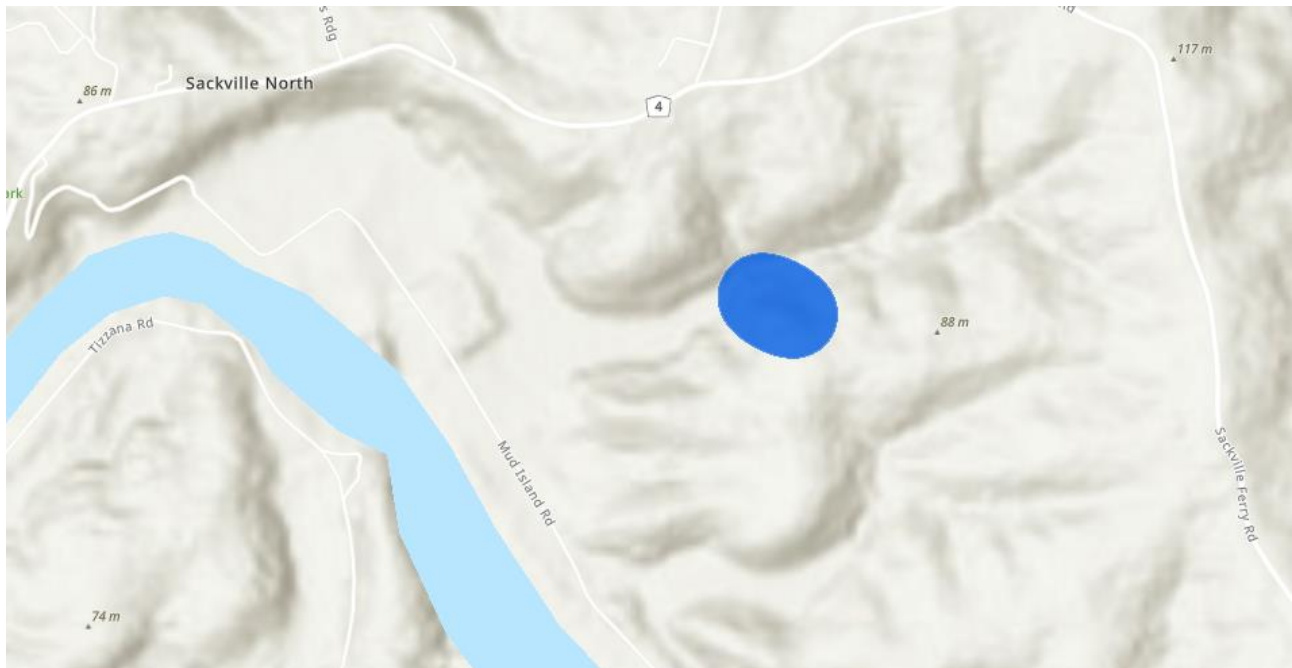
Premises have been isolated as water levels have impacted electricity infrastructure supplying the area. Once water levels reduce we will be able to access the network for inspections and also ensure customers switchboards have not been impacted by water. We expect to gain access to this area when water levels at Lower Portland are below 2m



Mud Island Rd, Sackville – Customers impacted - 3

Expected ETR – 6:00pm Monday 11/7/2022

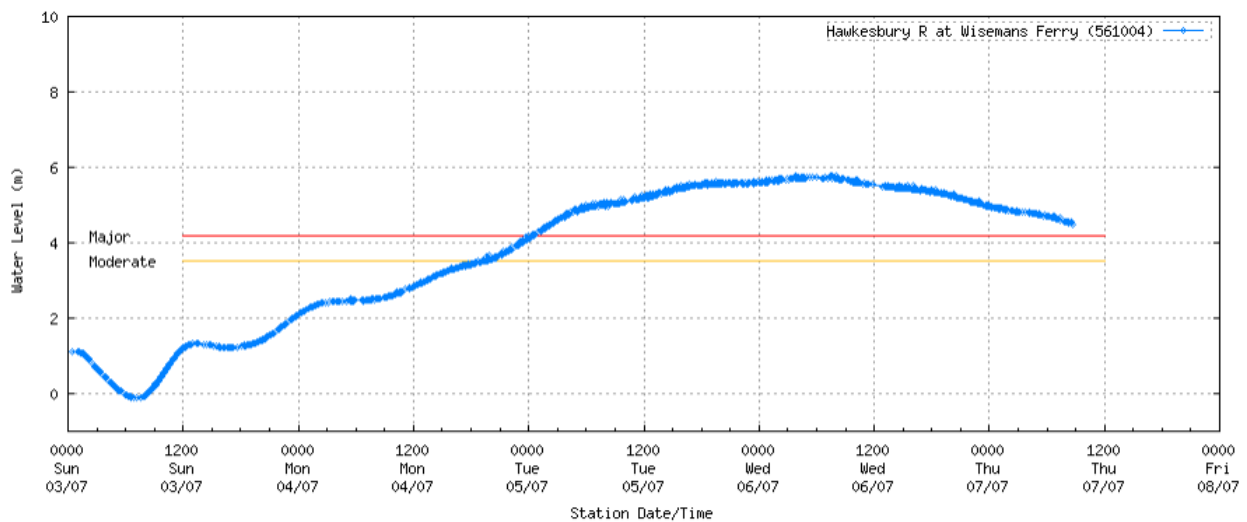
Premises have been isolated as water levels have impacted electricity infrastructure supplying the area. Once water levels reduce we will be able to access the network for inspections and also ensure customers switchboards have not been impacted by water. We expect to gain access to this area when water levels at Windsor Bridge are below 6m



River Rd, Leets Vale – Customers impacted - 6

Expected ETR – 6:00pm Saturday 9/7/2022

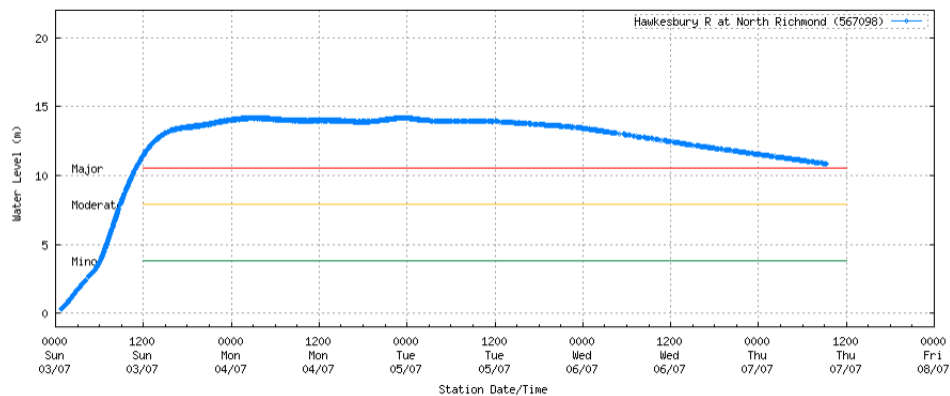
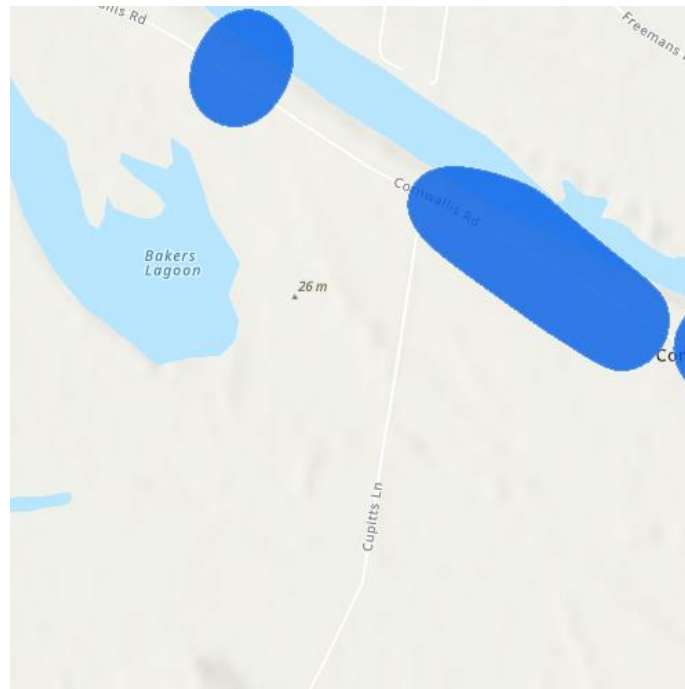
Premises have been isolated as water levels have impacted electricity infrastructure supplying the area. Once water levels reduce we will be able to access the network for inspections and also ensure customers switchboards have not been impacted by water. We expect to gain access to this area when water levels at Wisemans Ferry are below 2m



Cupitts Ln Richmond – Customers impacted – 1

Expected ETR – 6:00pm Sunday 10/7/2022

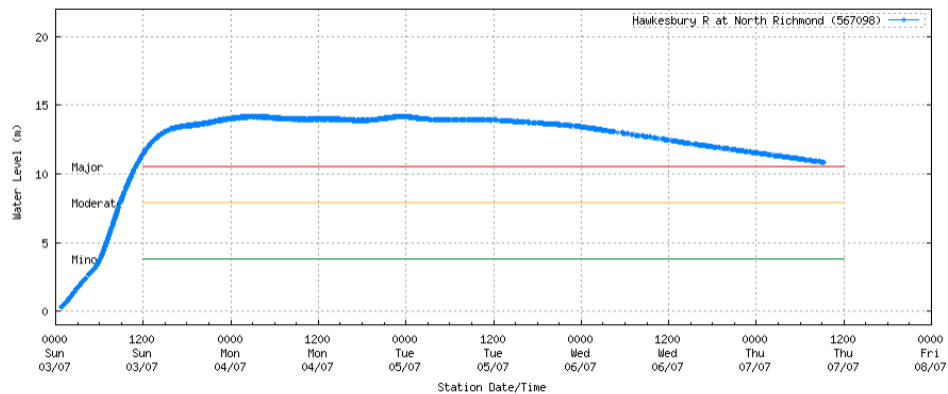
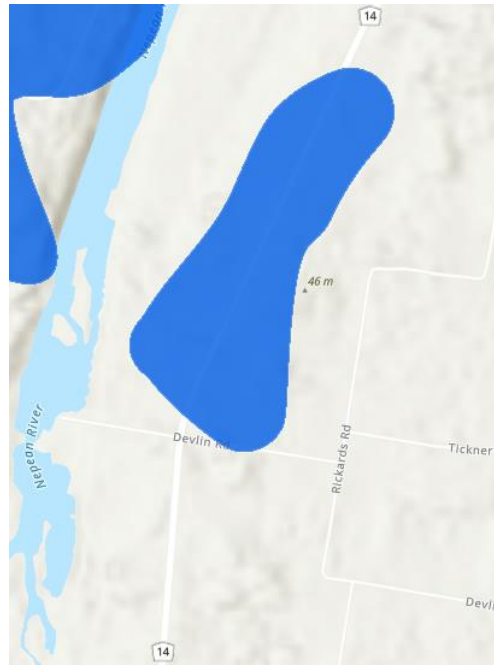
Premises have been isolated as water levels have impacted electricity infrastructure supplying the area. Once water levels reduce we will be able to access the network for inspections and also ensure customers switchboards have not been impacted by water. We expect to gain access to this area when water levels at North Richmond Bridge are below 6m



Castlereagh Rd Agnes Banks – Customers impacted - 5

Expected ETR – 6:00pm Saturday 9/7/2022

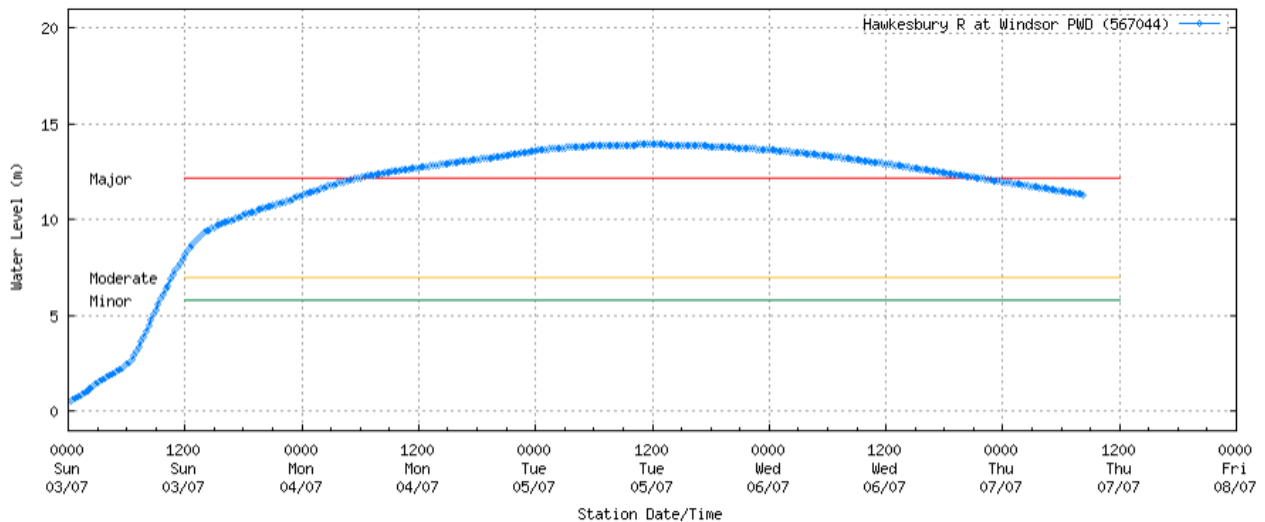
Premises have been isolated as water levels have impacted electricity infrastructure supplying the area. Once water levels reduce we will be able to access the network for inspections and also ensure customers switchboards have not been impacted by water. We expect to gain access to this area when water levels at North Richmond Bridge are below 6m



Fairey Rd, South Windsor – Network Impact

Expected ETR – 6:00pm Saturday 9/7/2022

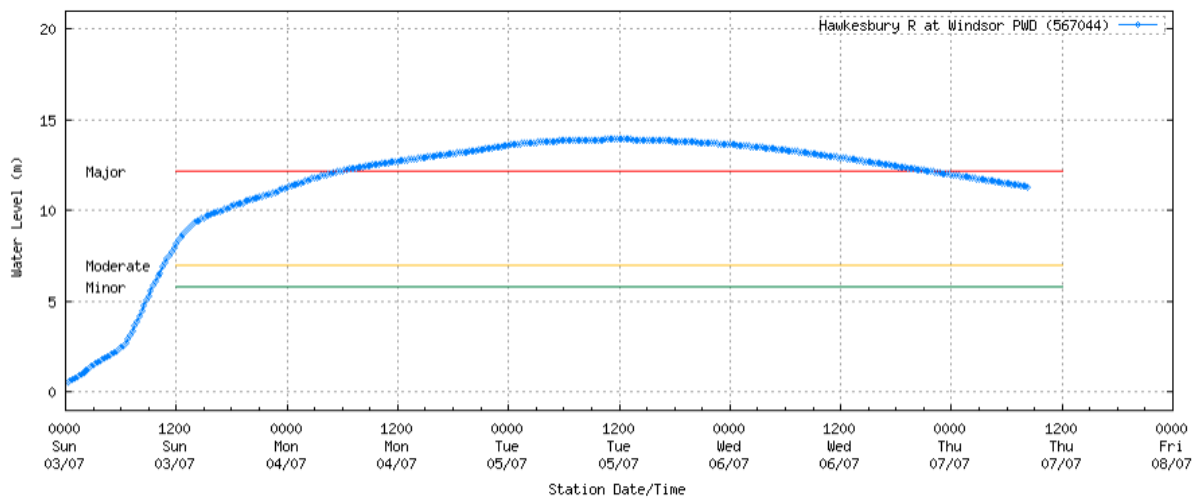
Premises have been isolated as water levels have impacted electricity infrastructure supplying the area. Once water levels reduce we will be able to access the network for inspections and also ensure customers switchboards have not been impacted by water. We expect to gain access to this area when water levels at Windsor Bridge are below 6m



Pitt Town Ferry Rd Wilberforce – Customers impacted - 5

Expected ETR – 6:00pm Sunday 10/7/2022

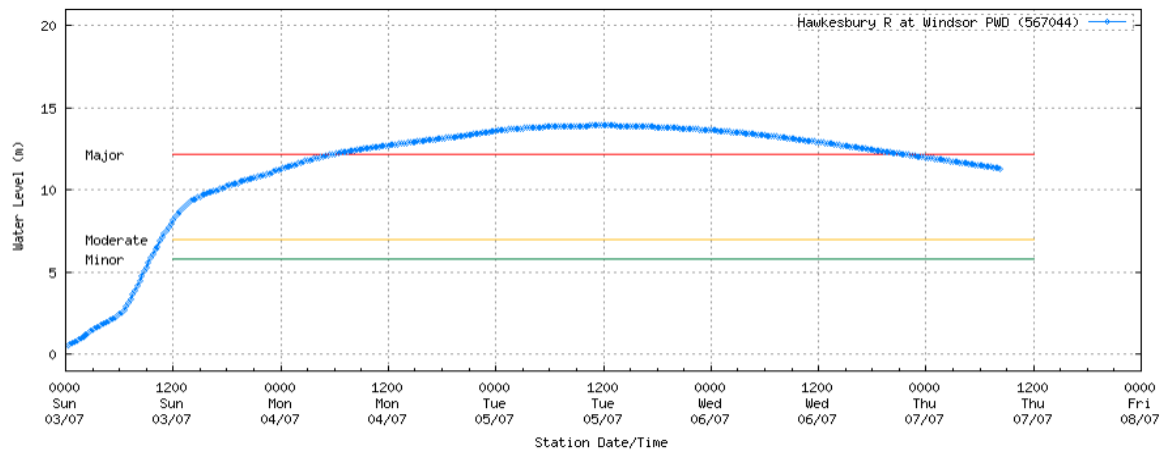
Premises have been isolated as water levels have impacted electricity infrastructure supplying the area. Once water levels reduce we will be able to access the network for inspections and also ensure customers switchboards have not been impacted by water. We expect to gain access to this area when water levels at Windsor Bridge are below 4m



Canning PI Pitt Town – Customers impacted – 2

Expected ETR – 6:00pm Sunday 10/7/2022

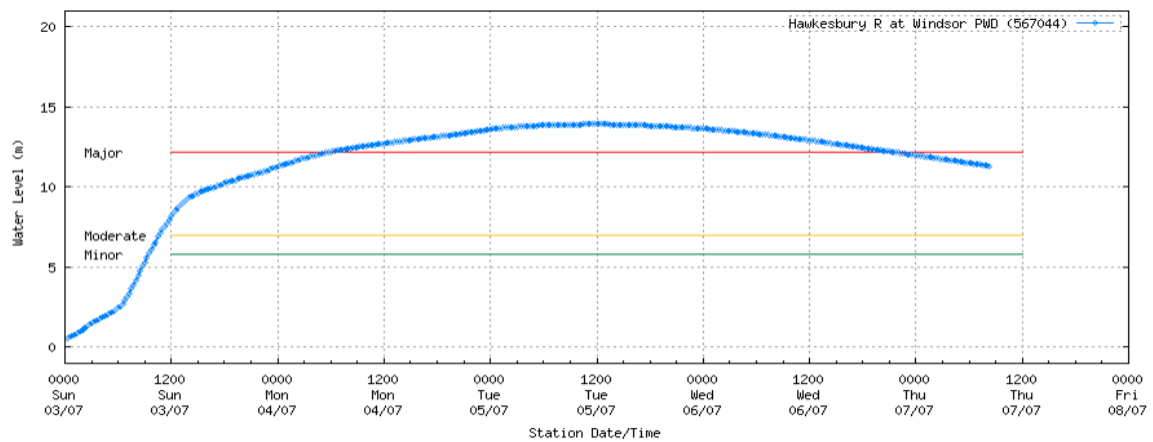
Premises have been isolated as water levels have impacted electricity infrastructure supplying the area. Once water levels reduce we will be able to access the network for inspections and also ensure customers switchboards have not been impacted by water. We expect to gain access to this area when water levels at Windsor Bridge are below 4m



Off Sackville Rd Ebenezer – Customers impacted – 4

Expected ETR – 6:00pm Sunday 10/7/2022

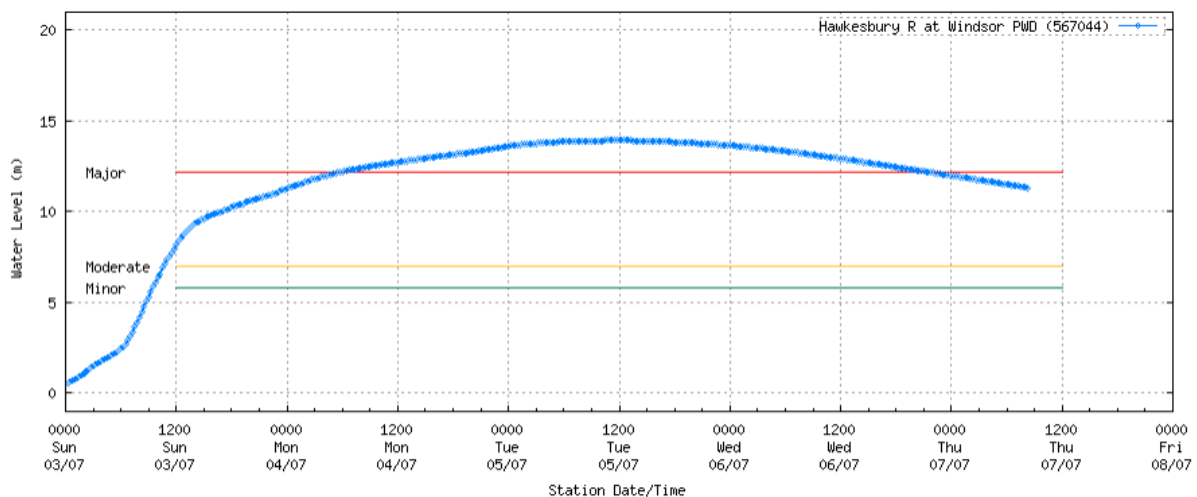
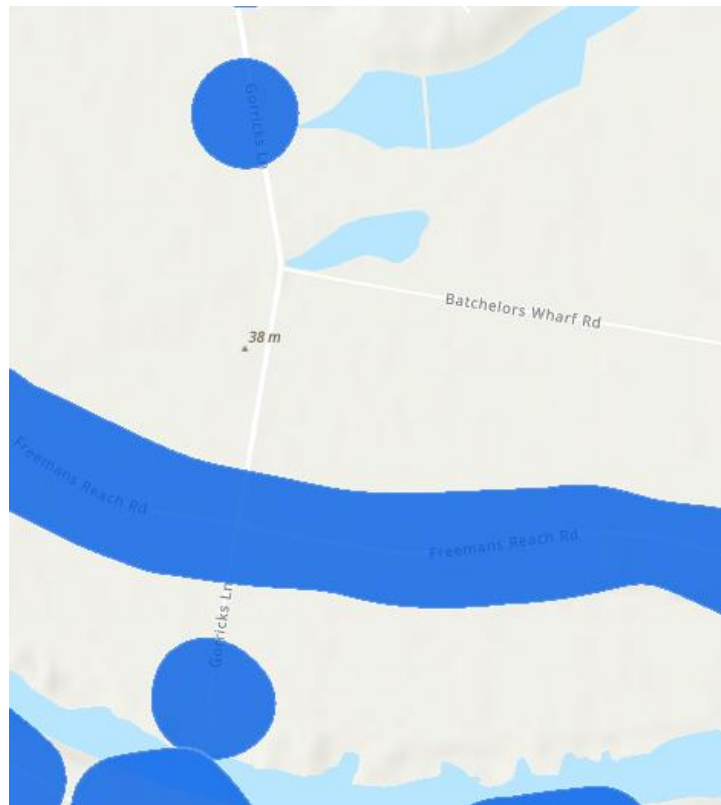
Premises have been isolated as water levels have impacted electricity infrastructure supplying the area. Once water levels reduce we will be able to access the network for inspections and also ensure customers switchboards have not been impacted by water. We expect to gain access to this area when water levels at Windsor Bridge are below 4m



Gorricks Ln Freemans Reach – Customers impacted – 7

Expected ETR – 6:00pm Sunday 10/7/2022

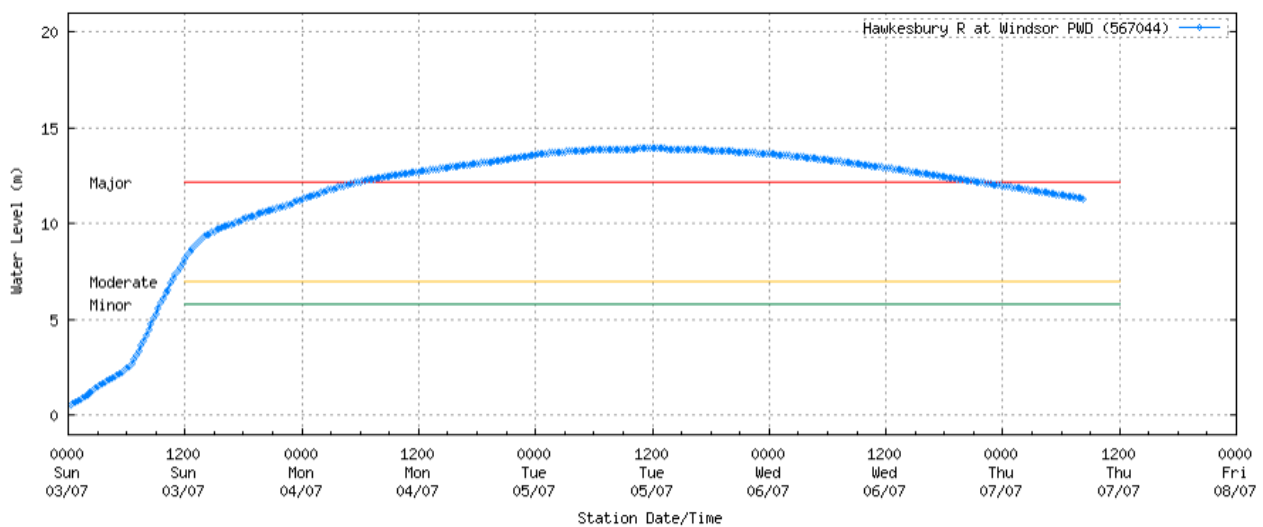
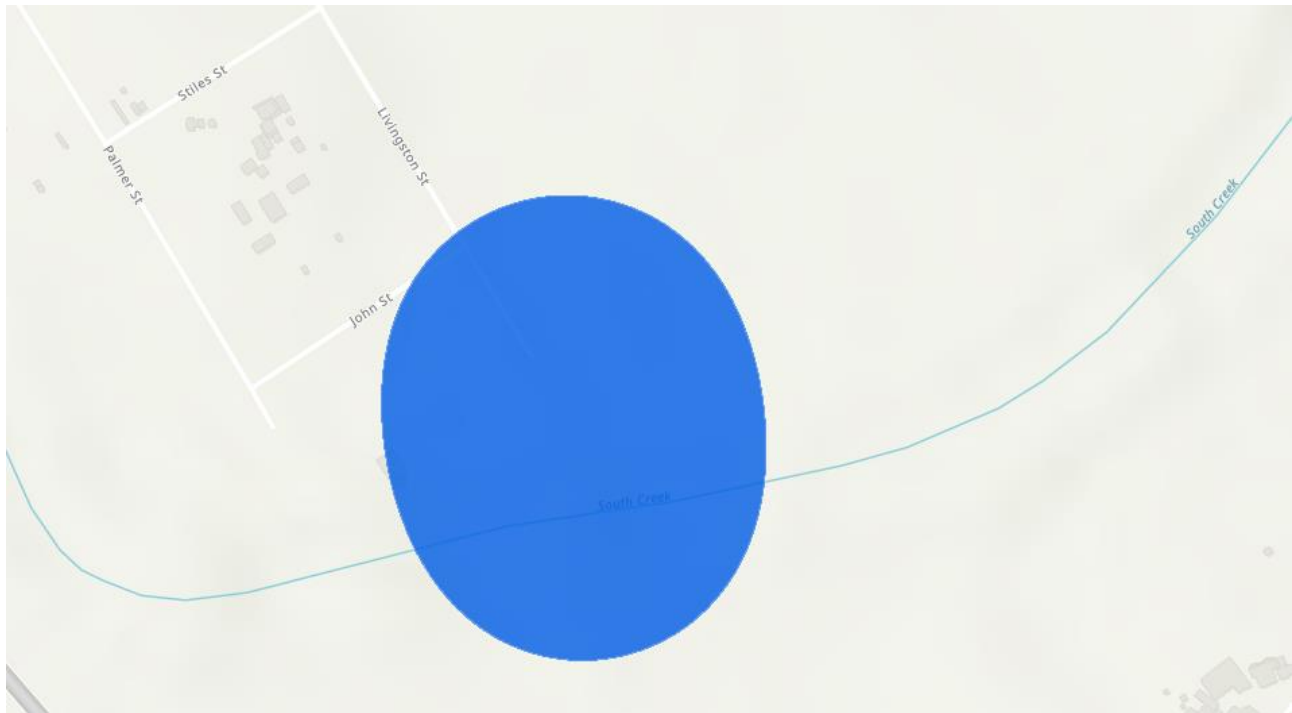
Premises have been isolated as water levels have impacted electricity infrastructure supplying the area. Once water levels reduce we will be able to access the network for inspections and also ensure customers switchboards have not been impacted by water. We expect to gain access to this area when water levels at Windsor Bridge are below 3m



Livingston St Windsor – Customers impacted – 2

Expected ETR – 6:00pm Sunday 10/7/2022

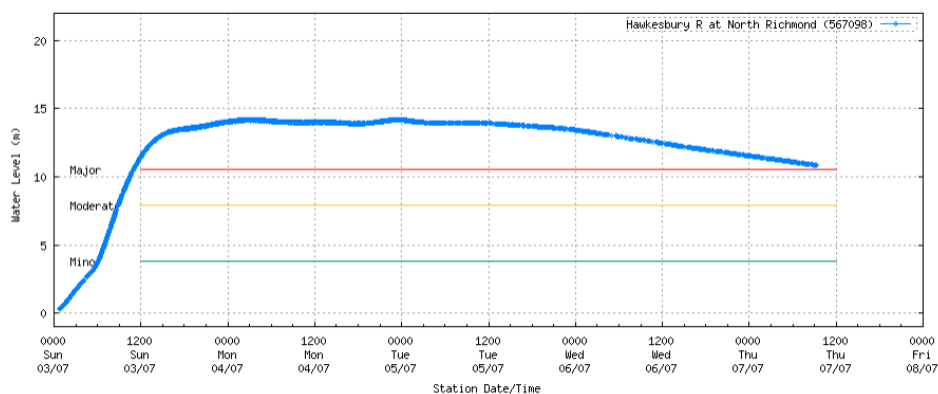
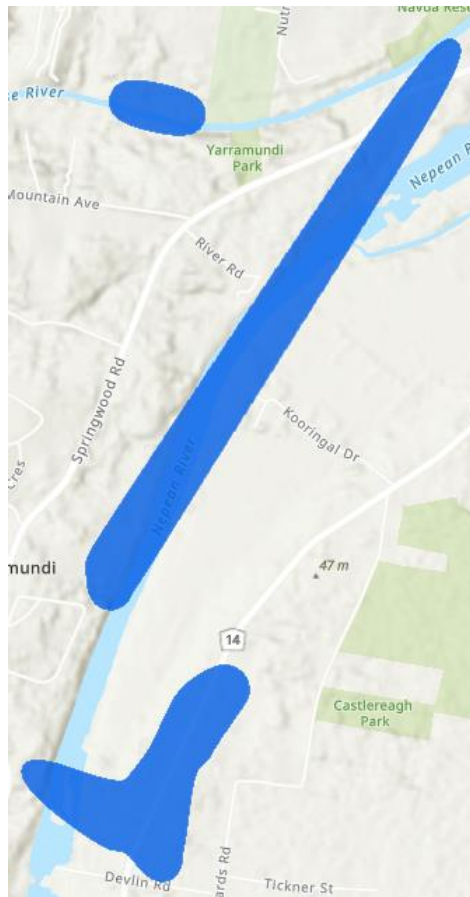
Premises have been isolated as water levels have impacted electricity infrastructure supplying the area. Once water levels reduce we will be able to access the network for inspections and also ensure customers switchboards have not been impacted by water. We expect to gain access to this area when water levels at Windsor Bridge are below 4m



Yarramundi – Customers Impacted – 34

Estimated ETR – 2:00pm Saturday 9/7/2022

Premises have been isolated as water levels have impacted electricity infrastructure supplying the area. Once water levels reduce we will be able to access the network for inspections and also ensure customers switchboards have not been impacted by water. We expect to gain access to this area when water levels at North Richmond Bridge are below 6m

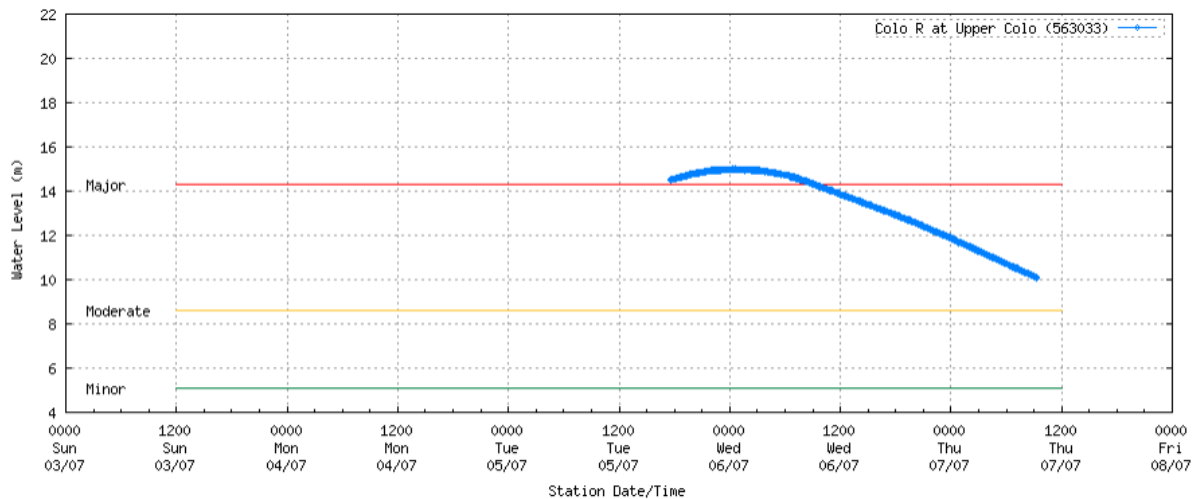
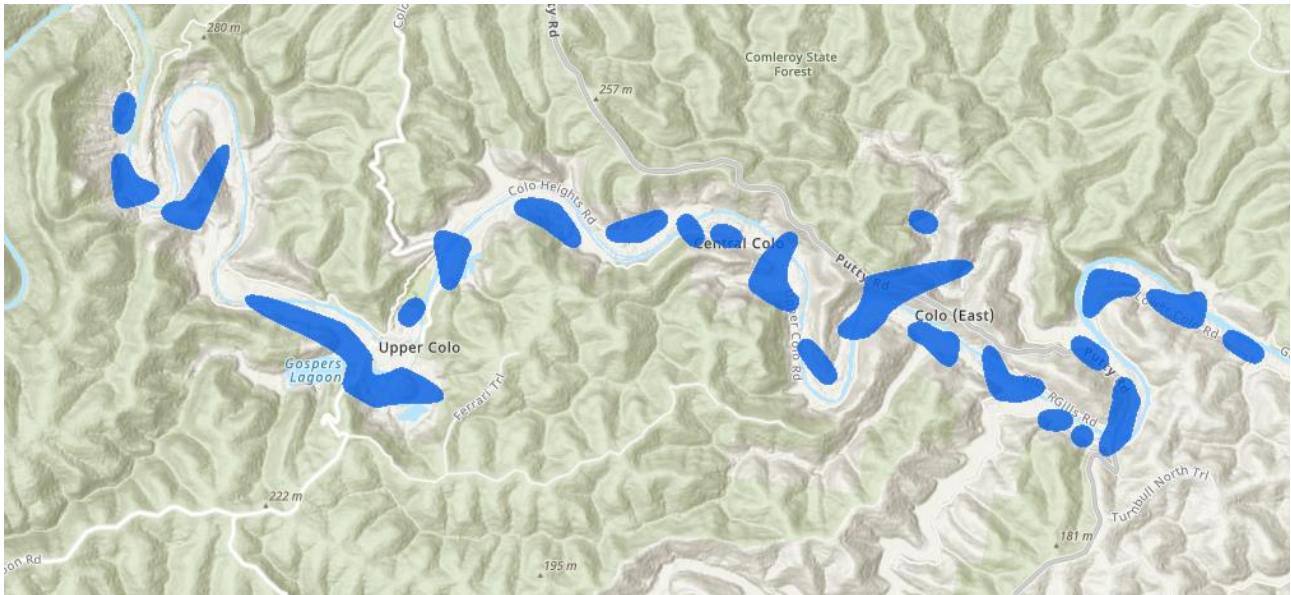


UPPER COLO

Lower Colo Rd, Lower Portland – Customers impacted – 132

Expected ETR – 6:00pm Saturday 9/7/2022

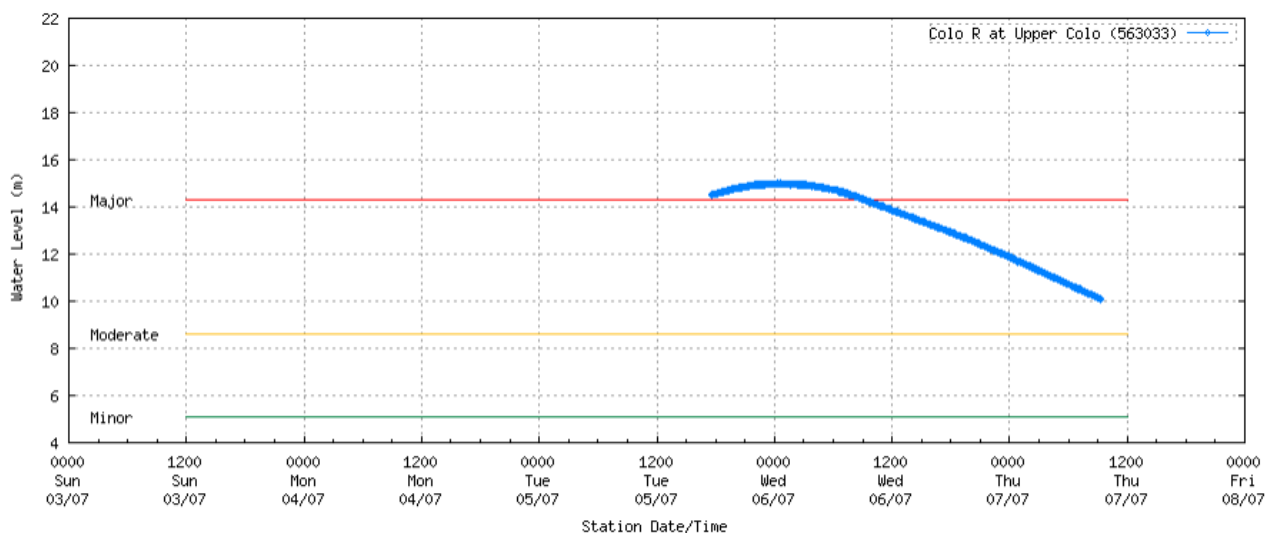
Premises have been isolated as water levels have impacted electricity infrastructure supplying the area. Once water levels reduce we will be able to access the network for inspections and also ensure customers switchboards have not been impacted by water. We expect to gain access to this area when water levels at Colo to be below 4m



Putty Road, Colo Heights – Customers impacted – 97

Expected ETR – 6:00pm Saturday 9/7/2022

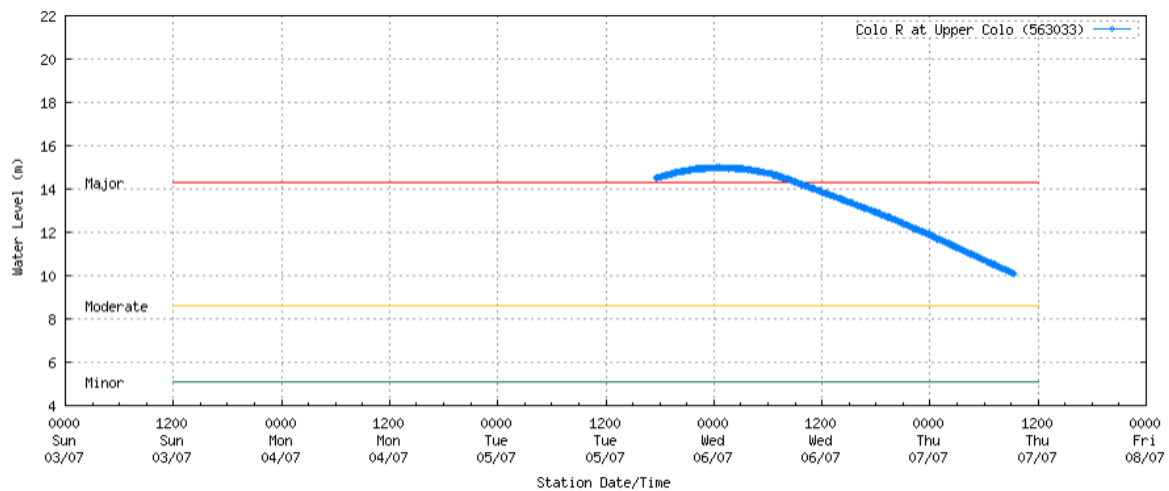
Premises have been isolated as water levels have impacted electricity infrastructure supplying the area. Once water levels reduce we will be able to access the network for inspections and also ensure customers switchboards have not been impacted by water. We expect to gain access to this area when water levels at Colo to be below 4m



Near Comleroy Rd, Upper Colo – Customers impacted – 2

Expected ETR – 6:00pm Saturday 9/7/2022

Premises have been isolated as water levels have impacted electricity infrastructure supplying the area. Once water levels reduce we will be able to access the network for inspections and also ensure customers switchboards have not been impacted by water. We expect to gain access to this area when water levels at Colo to be below 4m



Upper Colo Rd, Wheeny Creek – Customers impacted – 6

Expected ETR – 6:00pm Saturday 9/7/2022

Premises have been isolated as water levels have impacted electricity infrastructure supplying the area. Once water levels reduce we will be able to access the network for inspections and also ensure customers switchboards have not been impacted by water. We expect to gain access to this area when water levels at Colo to be below 4m

