



Flood restoration plan



As at 12/07/2022

As floodwaters subside and roads are repaired and reopened, we expect that we will be able to gain access to customers that have been isolated for safety and restore supply to all customers over the next 4 days.

Anticipated access and restoration times are listed over the following pages.

These projected times may be impacted by ongoing poor weather conditions or where there is damage to roads and bridges preventing access to parts of the electricity network.

We are continuing to monitor the situation closely and will add further updates as new information comes to hand.

Plan continues overleaf

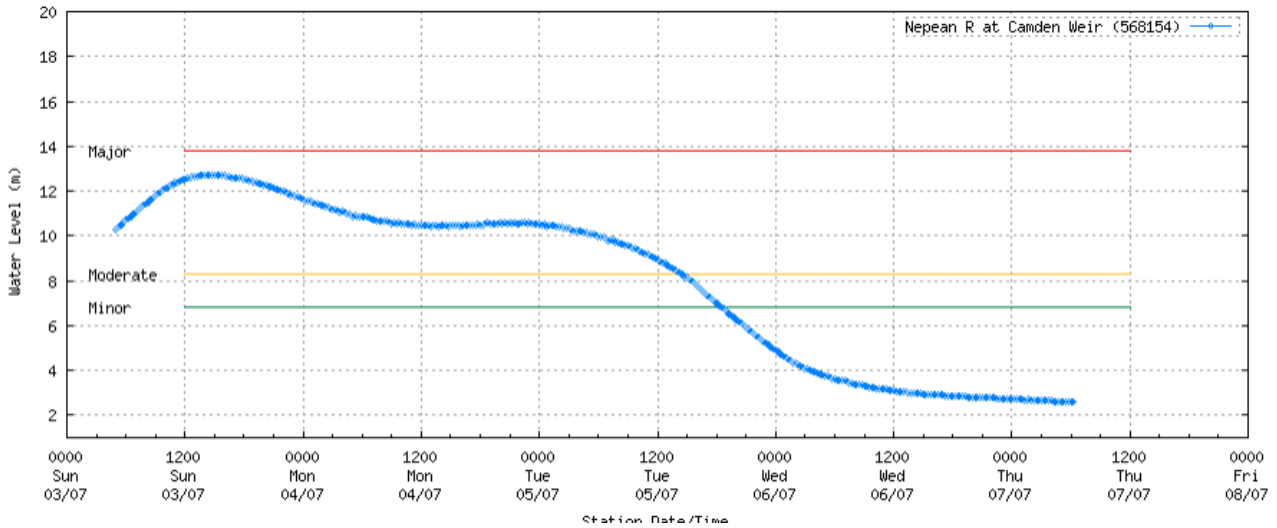
NEPEAN AREA

Ellis Ln, Ellis Lane – Customers Impacted- 2 (Pumps only)

There are no residential customers affected

Expected ETR: 6:00pm Monday 11/7/2022

Premises have been isolated as water levels have impacted pumps and buildings alongside the river. Once water levels reduce we will be able to access the network for inspections and also ensure customers switchboards have not been impacted by water. We expect to gain access to this area when water levels at Camden Weir are below 3m.



HAWKESBURY AREA

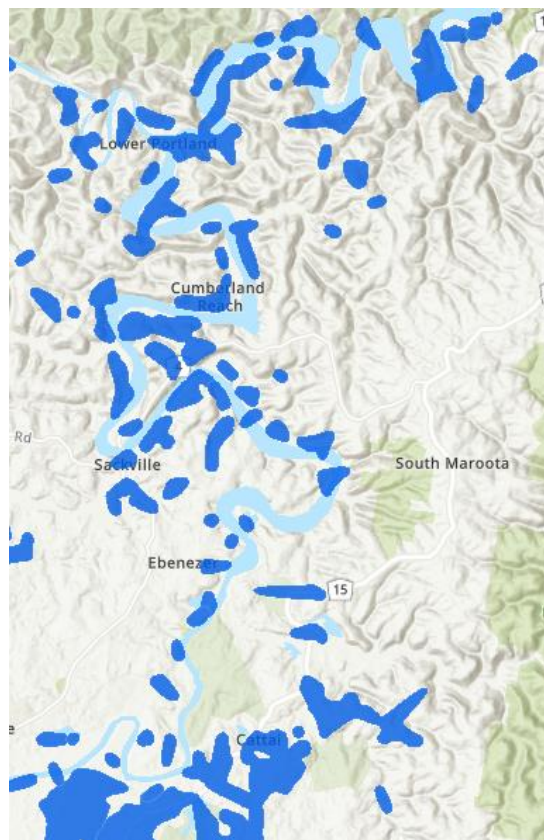
Cattai and Wisemans Zone Substation – Customers Impacted – 278

Expected ETR – 6:00pm Wednesday 13/7/2022

The major transmission line has been restored between Cattai and Wisemans Zone Substations. Feeder patrols are being conducted as flood waters recede. Customers continue to be restored progressively on completion of patrols; however localised flooding will impact customers in these regions.

Patrol of the area required due to volume of water inundation to establish what network damage and road access has occurred. Detailed estimates to continue to be provided as more information is gathered.

Cattai



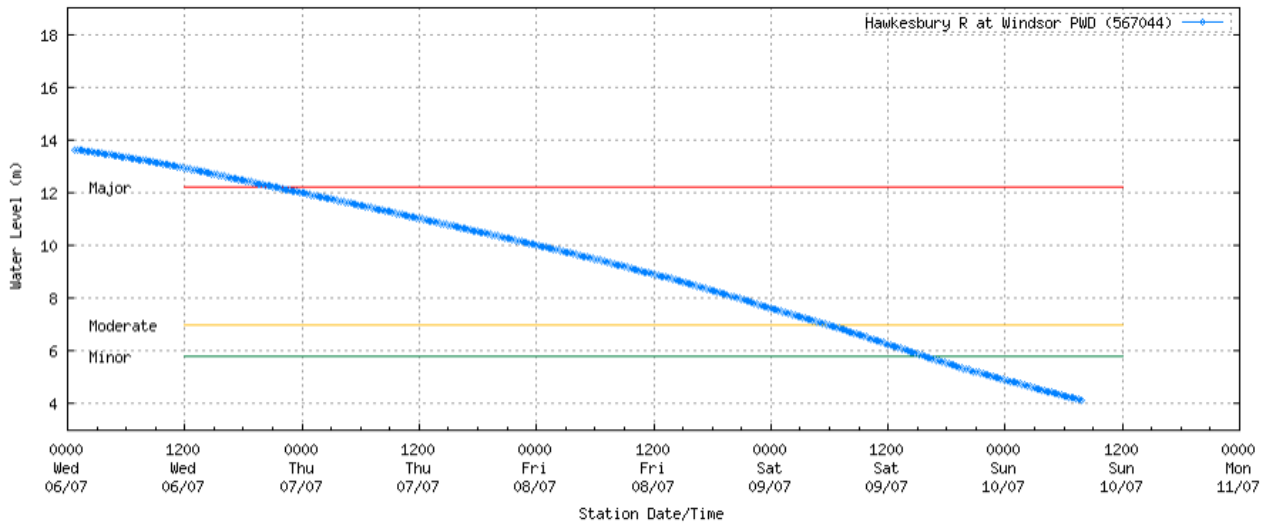
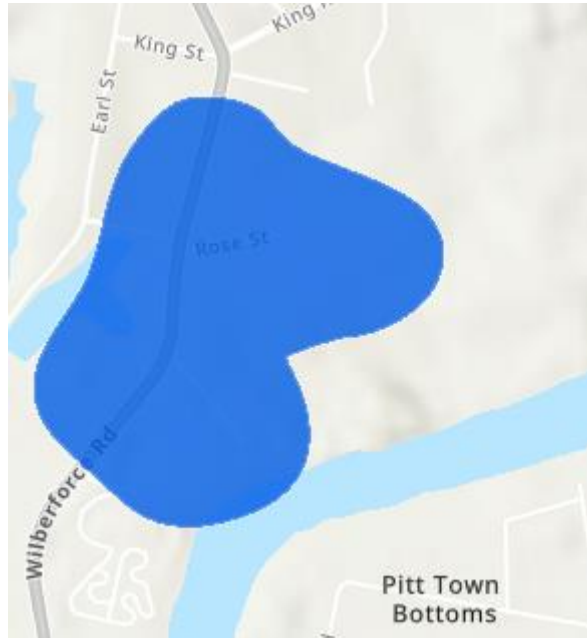
Wisemans



Wilberforce Rd, Wilberforce – Customers Impacted – 2

Estimated ETR – 6:00pm Tuesday 12/7/2022

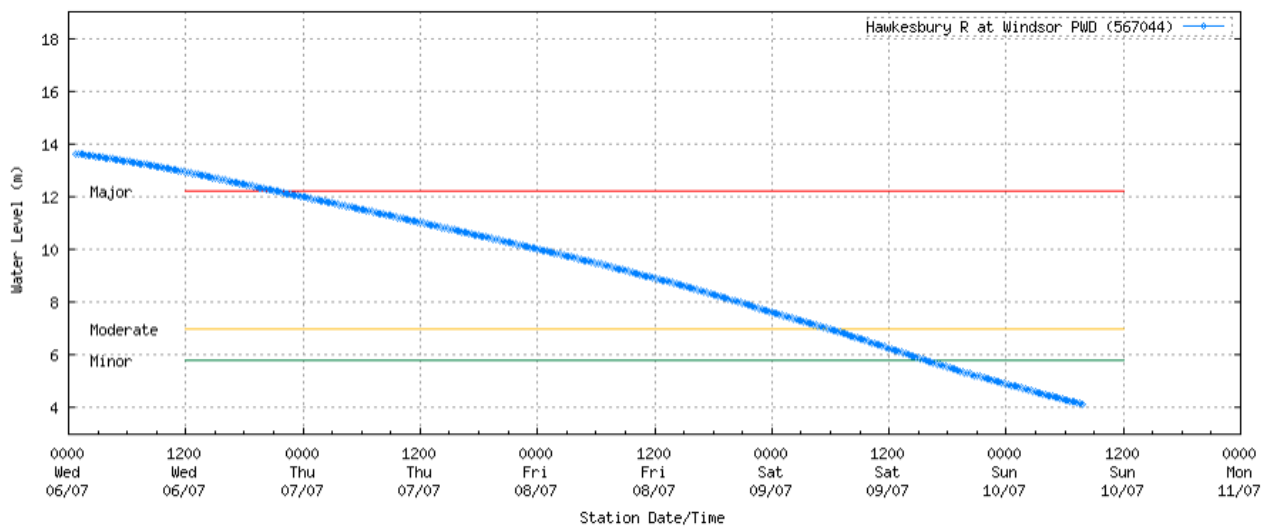
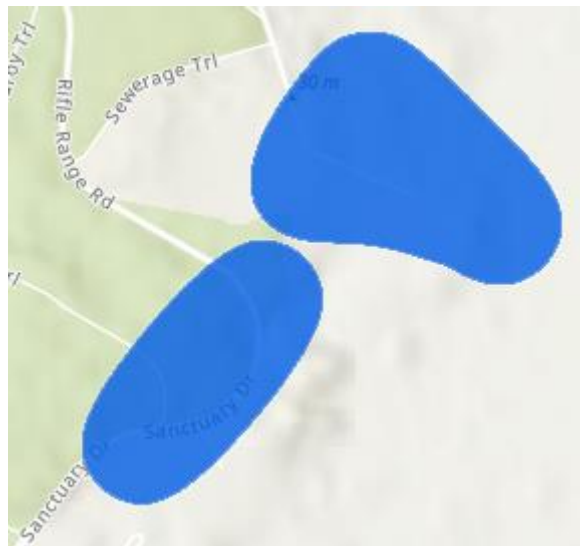
Premises have been isolated as water levels have impacted electricity infrastructure supplying the area. Once water levels reduce we will be able to access the network for inspections and also ensure customers switchboards have not been impacted by water. Impacted customers partially restored with remaining customers to be restored when access is available.



Sanctuary Dr, Windsor Downs – Customers Impacted – 1

Estimated ETR – 6:00pm Tuesday 12/7/2022

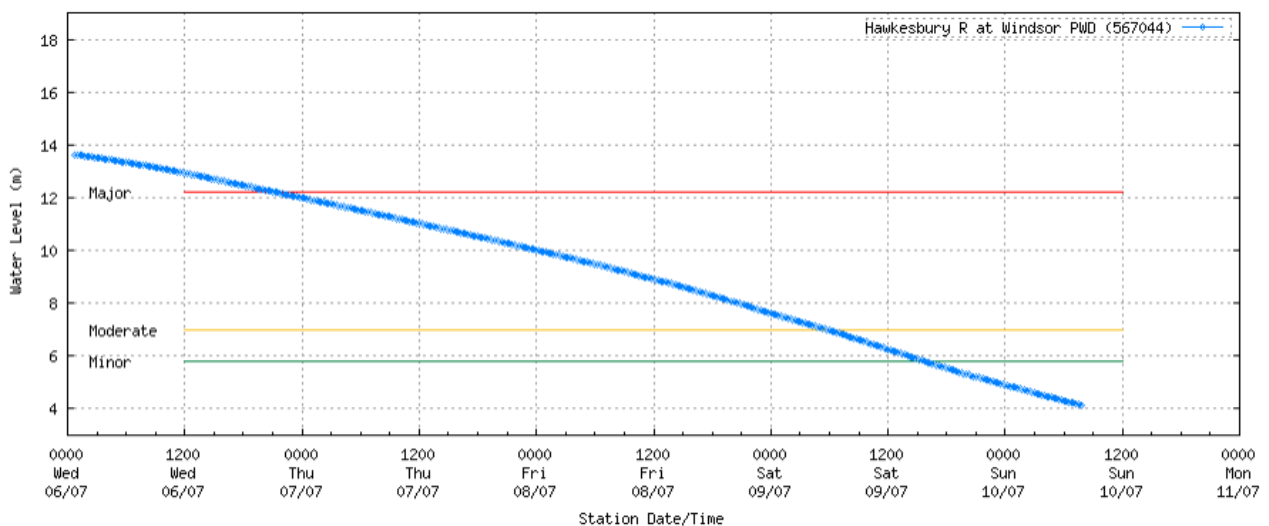
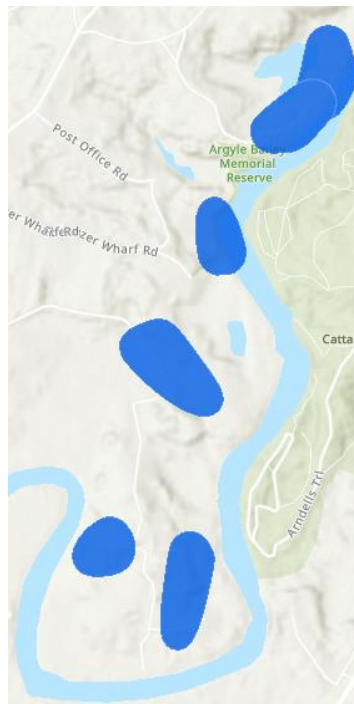
Premises have been isolated as water levels have impacted electricity infrastructure supplying the area. Once water levels reduce we will be able to access the network for inspections and also ensure customers switchboards have not been impacted by water. Majority of customers have had supplied restored in the area. Access to remaining customers expected when water levels at Windsor Bridge are below 4m.



Coromandel Rd/ Grono Farm, Ebenezer – Customers impacted – 9

Expected ETR – 6:00pm Tuesday 12/7/2022

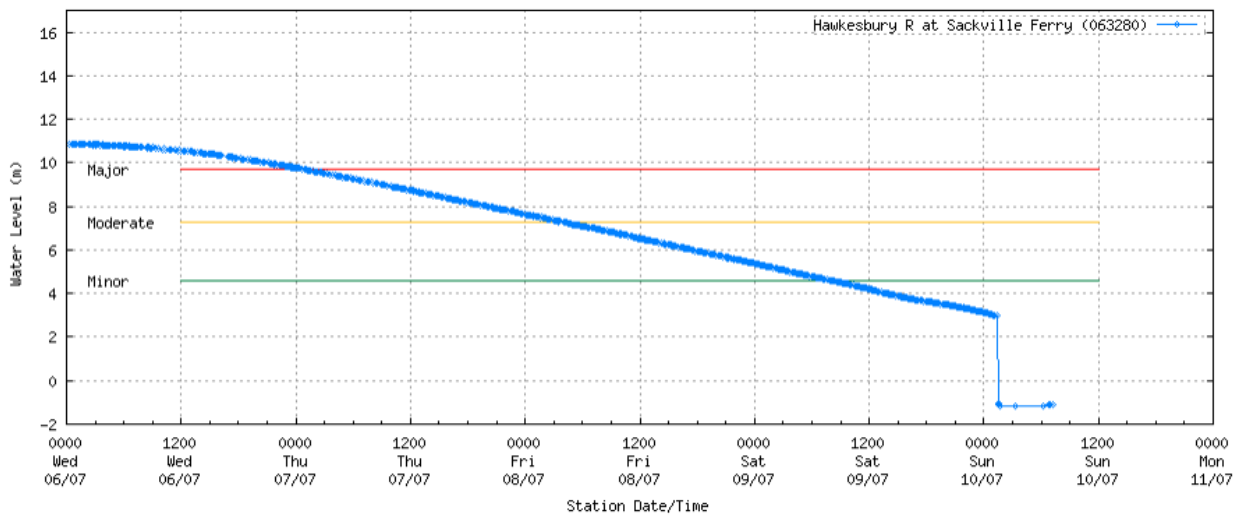
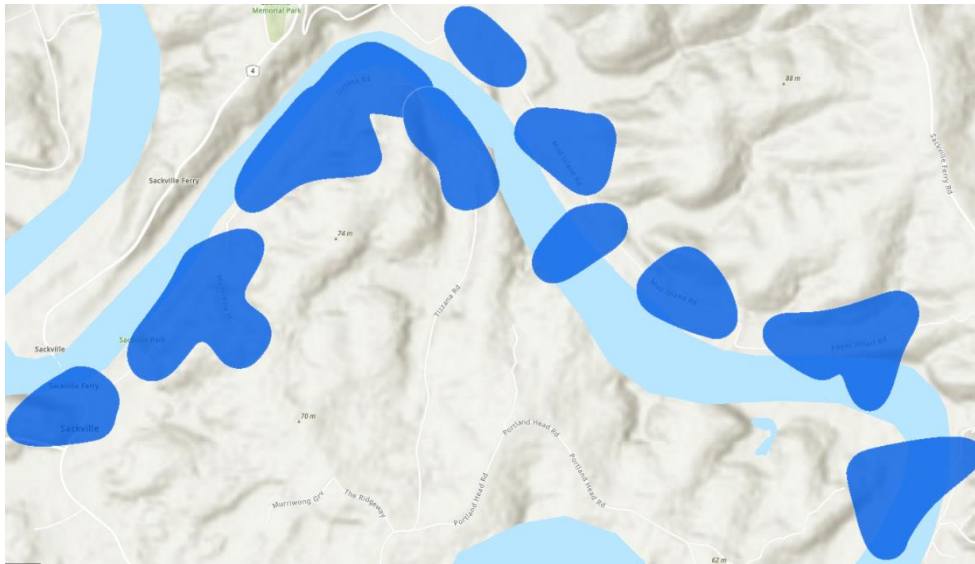
Premises have been isolated as water levels have impacted electricity infrastructure supplying the area. Once water levels reduce we will be able to access the network for inspections and also ensure customers switchboards have not been impacted by water. We expect to gain access to this area when water levels at Windsor Bridge are below 7m



Tizzana Rd/ Mud Island Rd, Sackville – Customers impacted – 81 restored, 10 remaining

Expected ETR – **6:00pm Wednesday 13/7/2022**

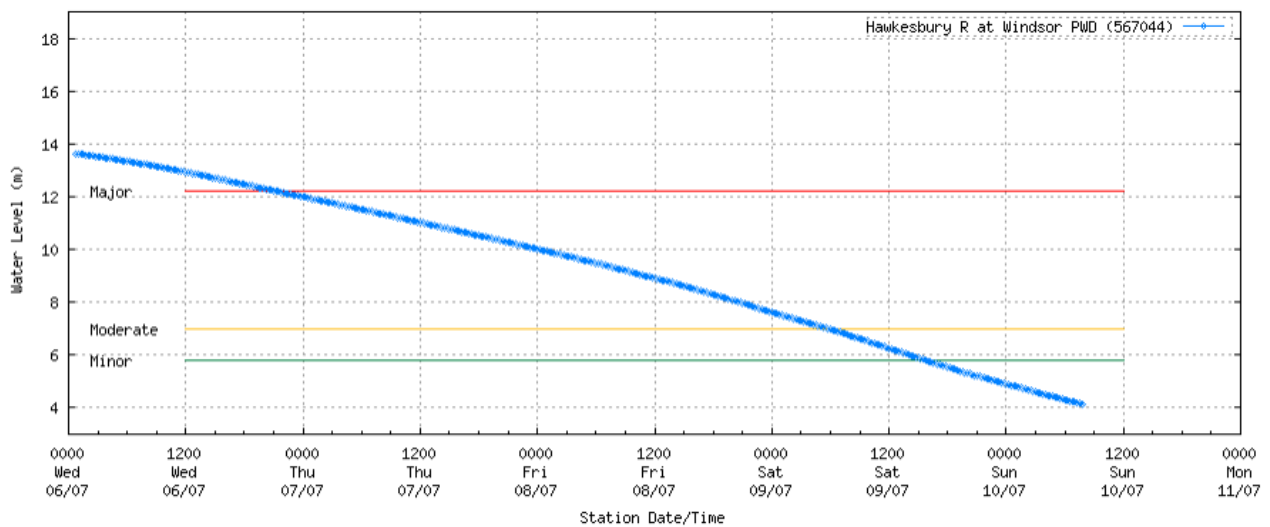
Premises have been isolated as water levels have impacted electricity infrastructure supplying the area. Once water levels reduce we will be able to access the network for inspections and also ensure customers switchboards have not been impacted by water. We expect to gain access to this area when water levels at Sackville Ferry are below 4m.



Pitt Town Ferry Rd, Wilberforce – Customers impacted – 17 restored, 1 remaining

Expected ETR – **6:00pm Wednesday 13/7/2022**

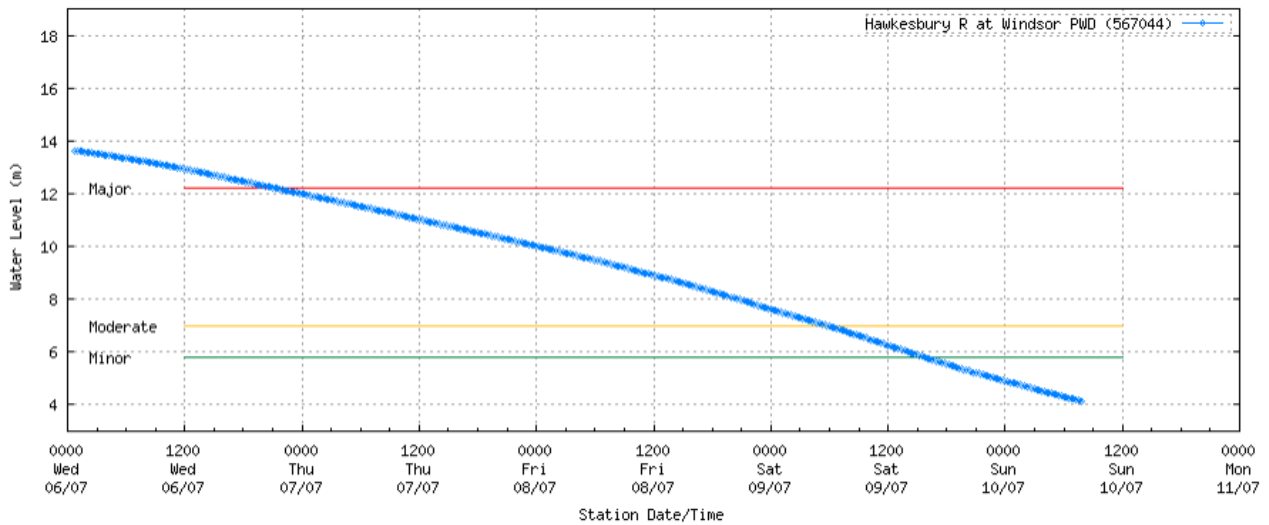
Premises have been isolated as water levels have impacted electricity infrastructure supplying the area. Once water levels reduce we will be able to access the network for inspections and also ensure customers switchboards have not been impacted by water. We expect to gain access to this area when water levels at Windsor Bridge are below 4m.



Newman Rd, Maraylya – Customers impacted – 1

Expected ETR – **6:00pm Wednesday 13/7/2022**

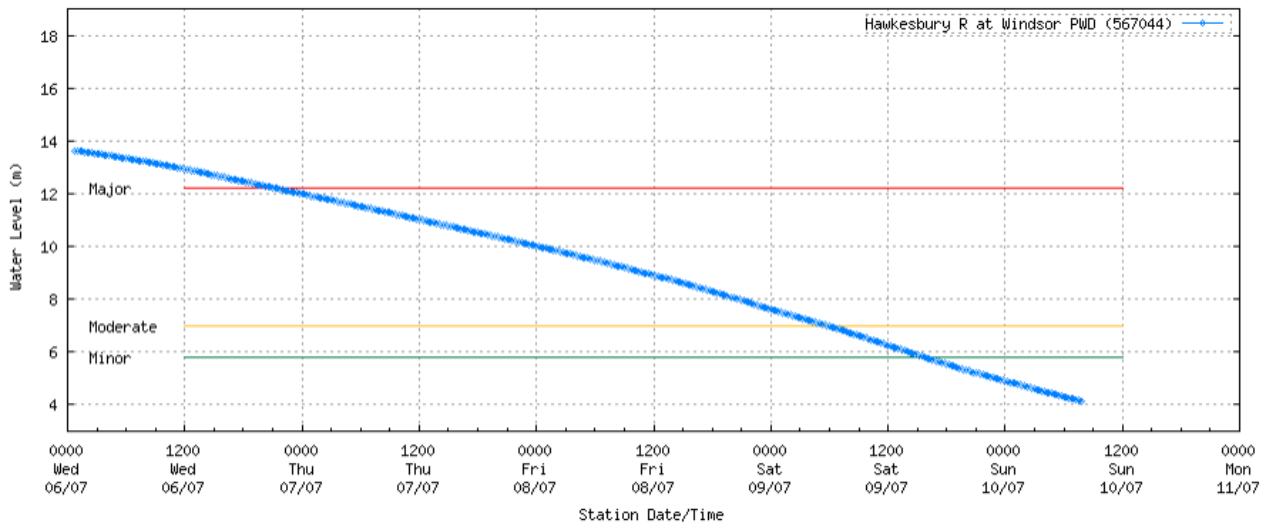
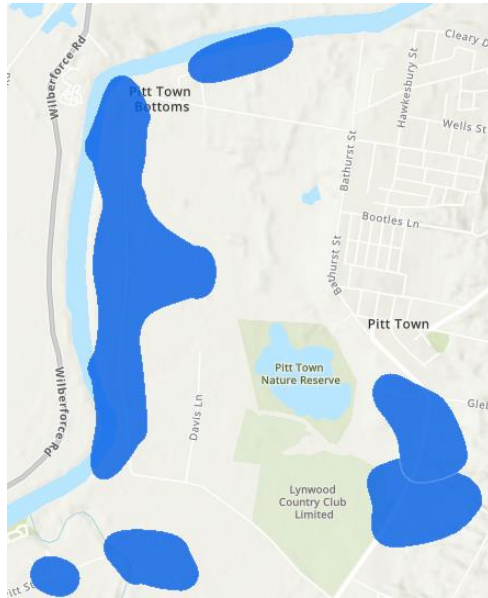
Premises have been isolated as water levels have impacted electricity infrastructure supplying the area. Once water levels reduce we will be able to access the network for inspections and also ensure customers switchboards have not been impacted by water. We expect to gain access to this area when water levels at Windsor Bridge are below 4m



Pitt Town Bottoms – Customers impacted – 59 restored, 1 remaining

Expected ETR – **6:00pm Thursday 14/7/2022**

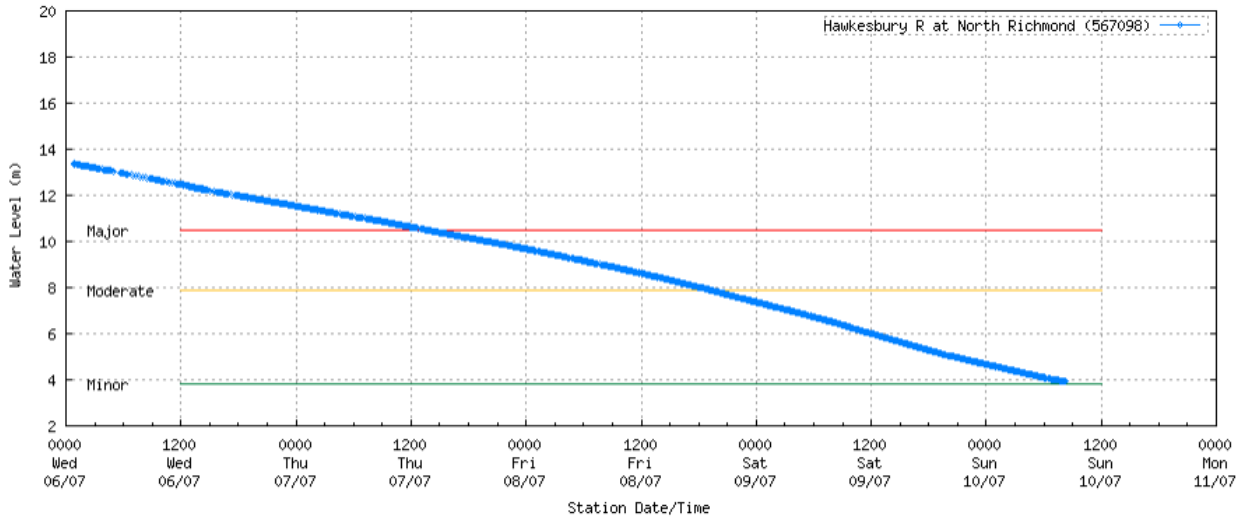
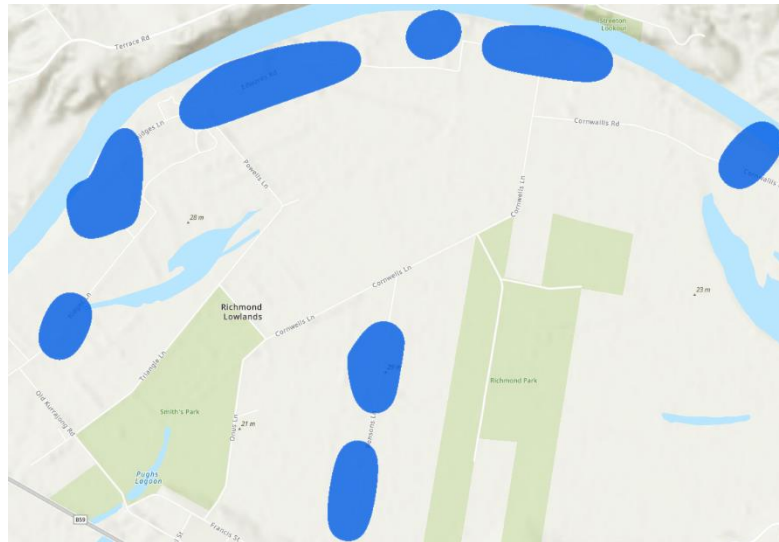
Premises are being inspected. Restoration of supply to safe installations is expected at above ETR. Customers who remain without supply after ETR should refer to “Safety Inspection Notice” and/or “Works Completed Information Sheet” for next steps. Many customers required to be cut away due to flood damage.



Richmond Lowlands – completed – 29

Expected ETR – 6:00pm Sunday 10/7/2022

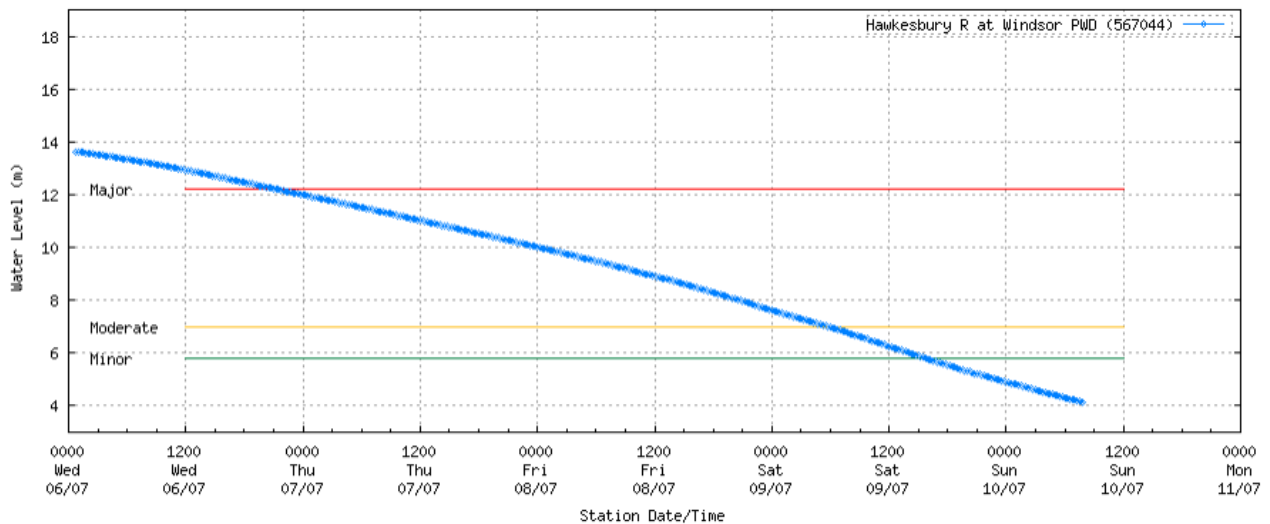
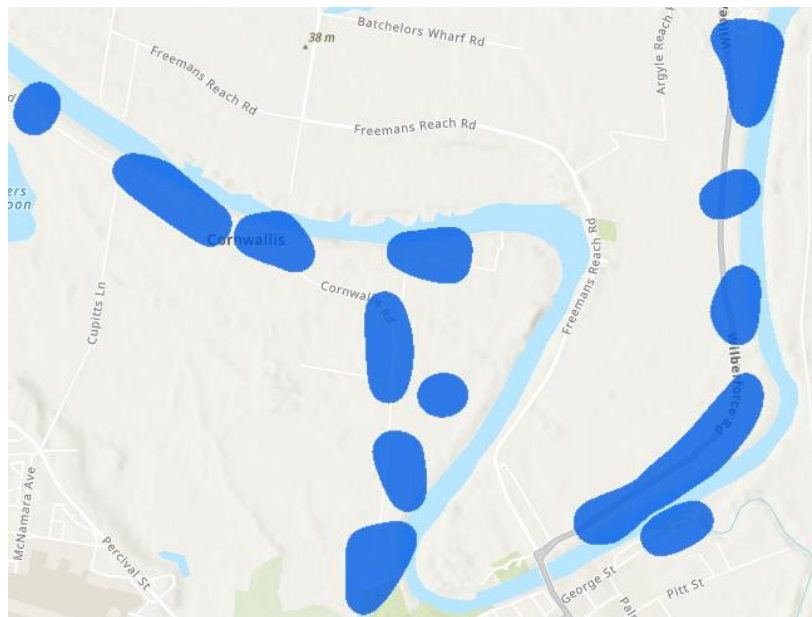
Premises are being inspected. Restoration of supply to safe installations is expected at above ETR. Customers who remain without supply after ETR should refer to “Safety Inspection Notice” and/or “Works Completed Information Sheet” for next steps. Some customers required to be cut away due to flood damage.



Cornwallis Rd/ Wilberforce Rd – Customers impacted – 18 restored, 16 remaining

Expected ETR – 6:00pm Wednesday 13/7/2022

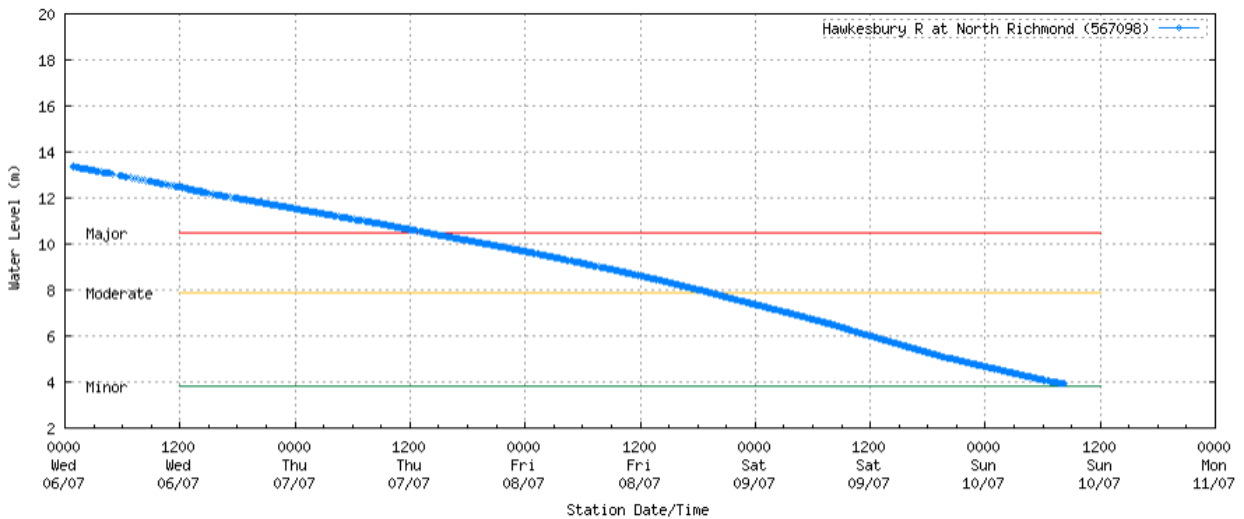
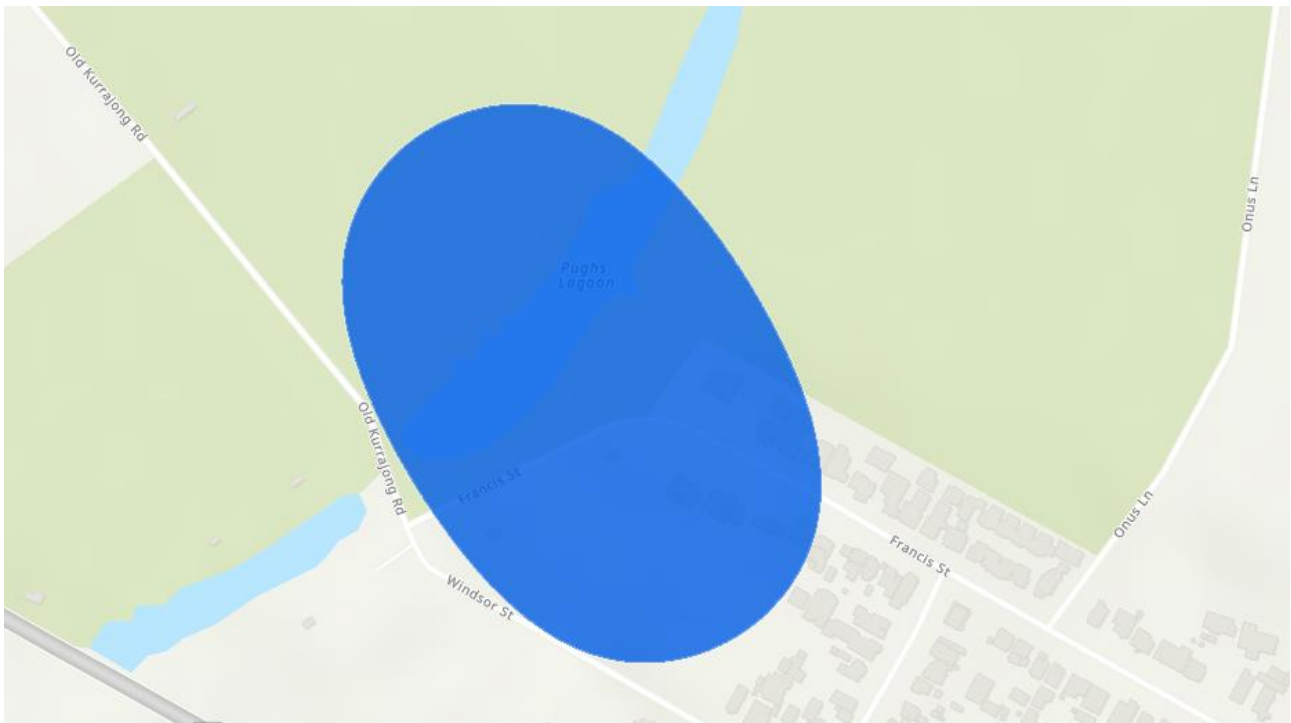
Premises have been isolated as water levels have impacted electricity infrastructure supplying the area. Once water levels reduce we will be able to access the network for inspections and also ensure customers switchboards have not been impacted by water. We expect to gain access to this area when water levels at Windsor Bridge are below 5m.



Francis St, Richmond – Customers impacted – 2

Expected ETR – 6:00pm Wednesday 13/7/2022

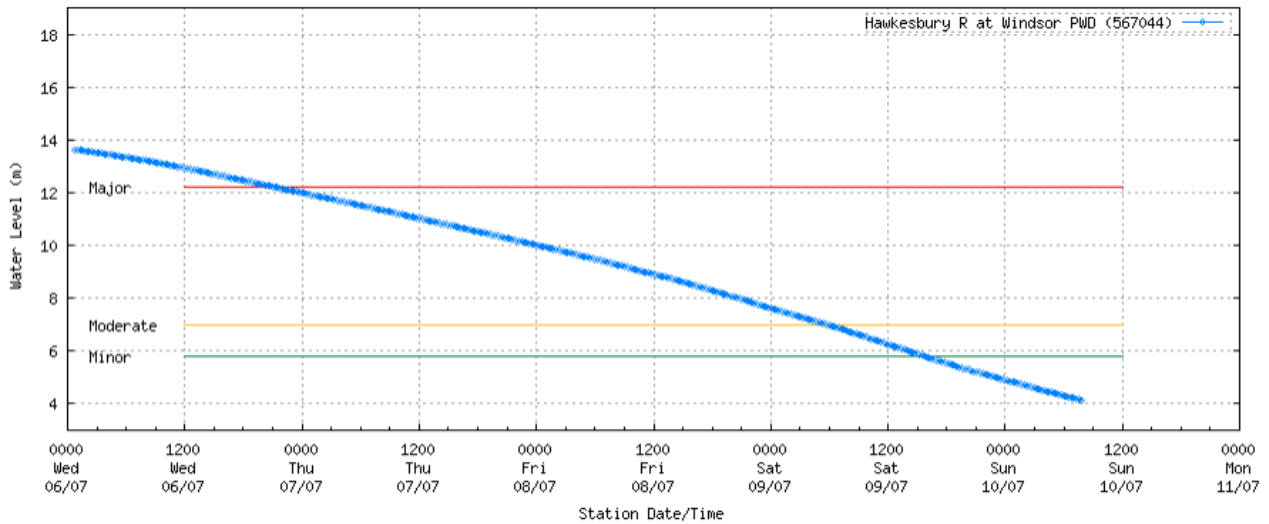
Premises have been isolated as water levels have impacted electricity infrastructure supplying the area. Once water levels reduce we will be able to access the network for inspections and also ensure customers switchboards have not been impacted by water. We expect to gain access to this area when water levels at North Richmond Bridge are below 6m.



Level Crossing Rd, Vineyard– Customers impacted - 1

Expected ETR – **6:00pm Thursday 14/7/2022**

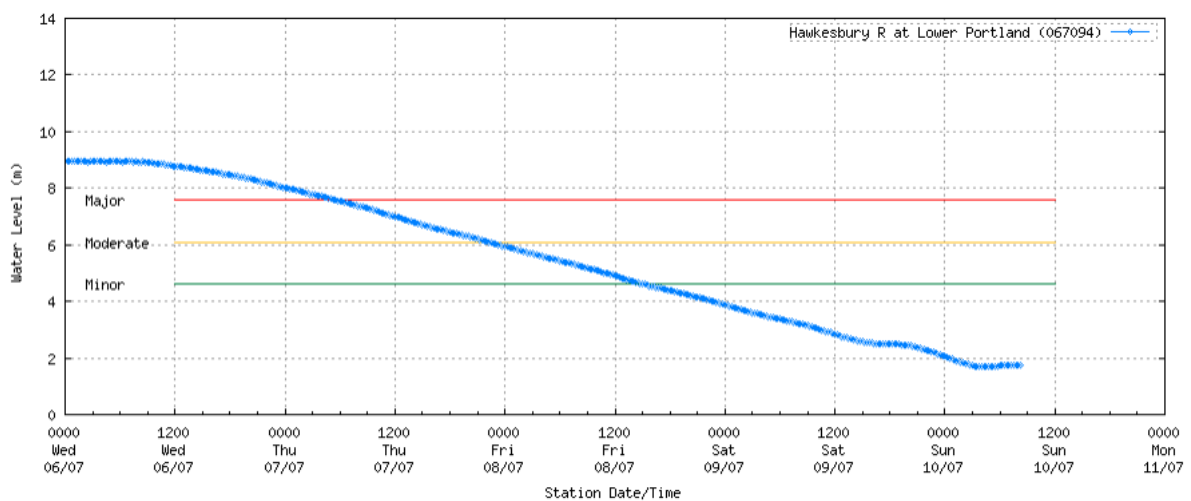
Premises have been isolated as water levels have impacted electricity infrastructure supplying the area. Once water levels reduce we will be able to access the network for inspections and also ensure customers switchboards have not been impacted by water. We expect to gain access to this area when water levels at Windsor Bridge are below 6m.



River Rd, Lower Portland– Customers impacted – 18 restored, 1 remaining

Expected ETR – 6:00pm Wednesday 13/7/2022

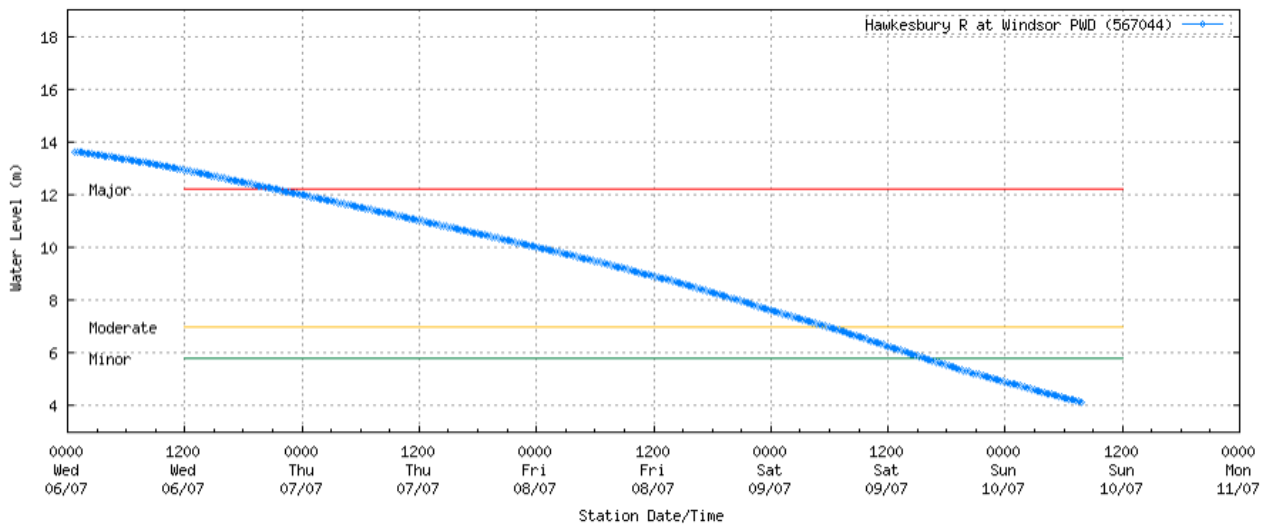
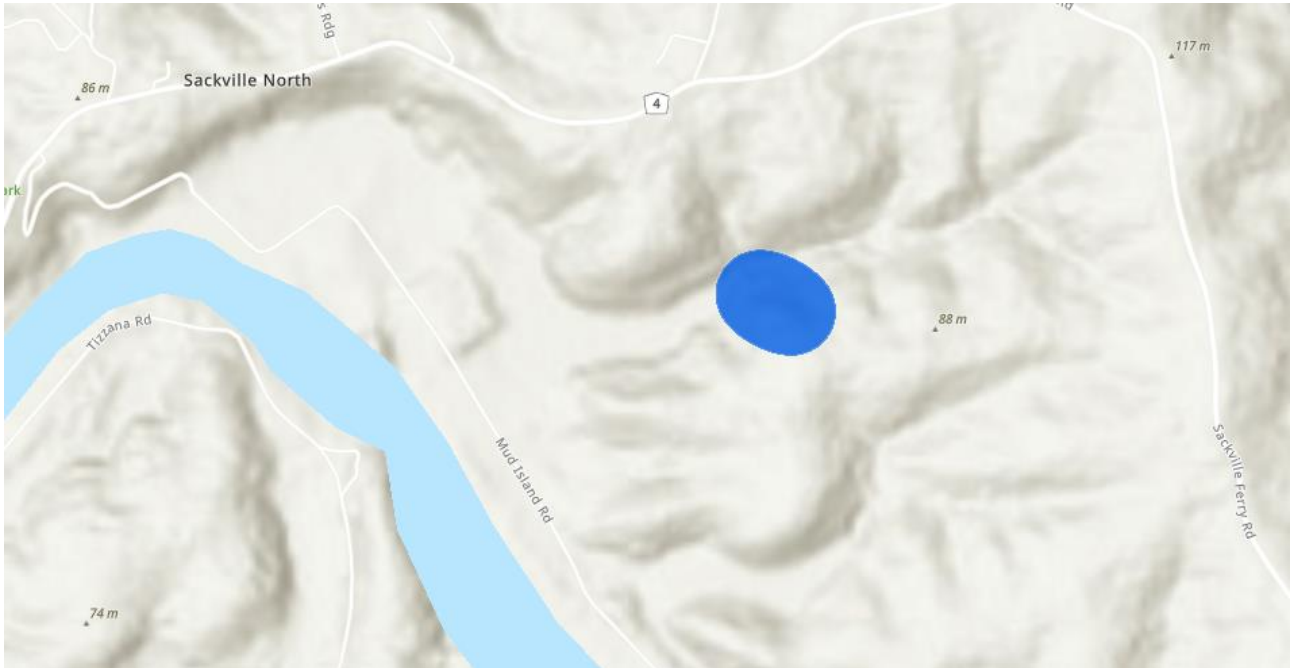
Premises have been isolated as water levels have impacted electricity infrastructure supplying the area. Once water levels reduce we will be able to access the network for inspections and also ensure customers switchboards have not been impacted by water. We expect to gain access to this area when water levels at Lower Portland are below 2m



Mud Island Rd, Sackville – Customers impacted - 2

Expected ETR – 6:00pm Wednesday 13/7/2022

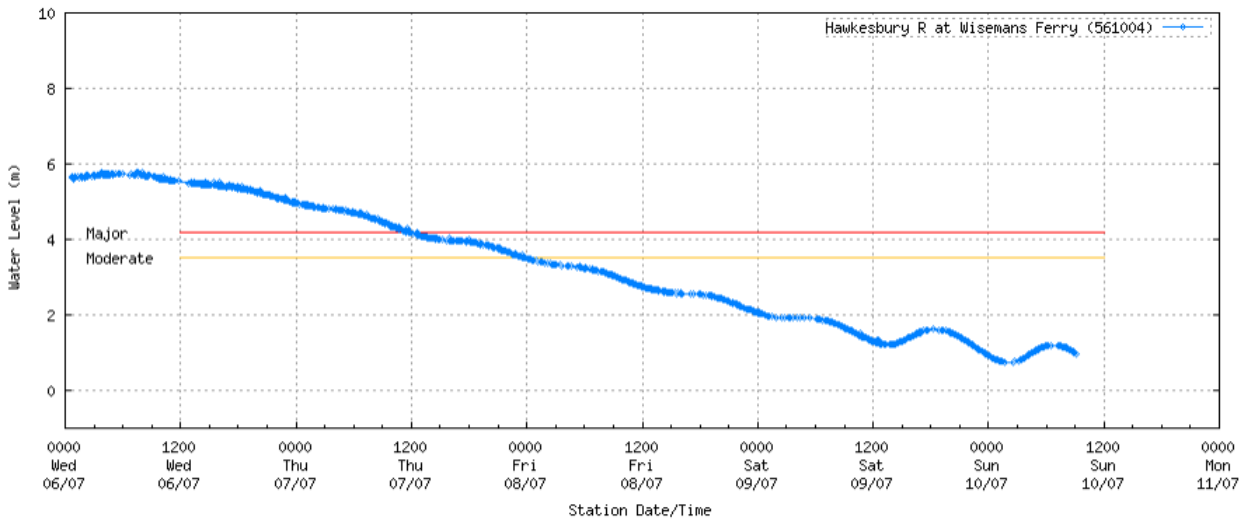
Premises have been isolated as water levels have impacted electricity infrastructure supplying the area. Once water levels reduce we will be able to access the network for inspections and also ensure customers switchboards have not been impacted by water. We expect to gain access to this area when water levels at Windsor Bridge are below 6m



River Rd, Leets Vale – Customers impacted - 6

Expected ETR – 6:00pm Wednesday 13/7/2022

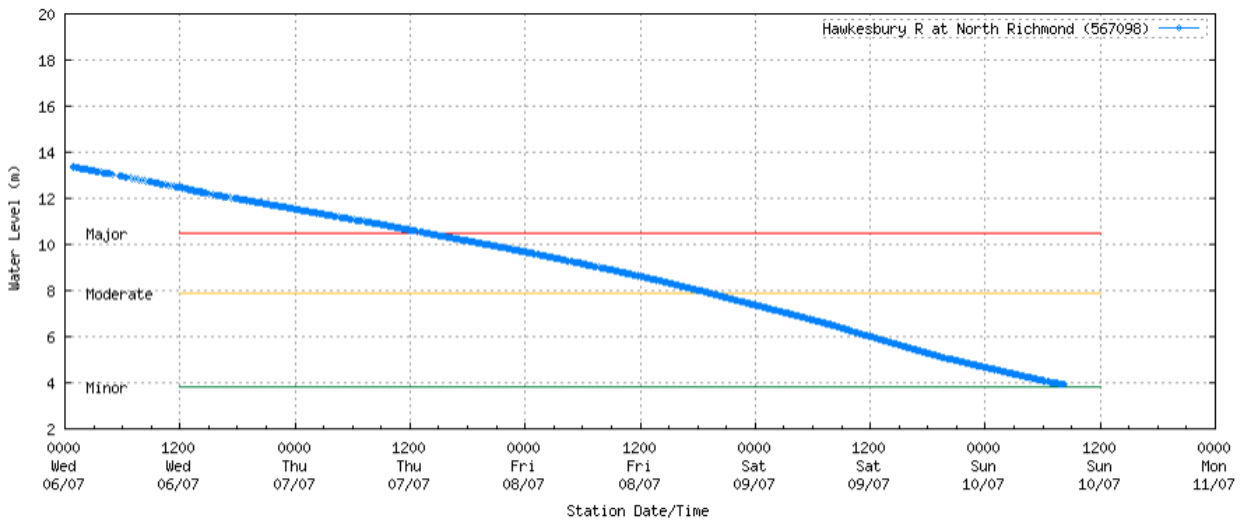
Premises have been isolated as water levels have impacted electricity infrastructure supplying the area. Once water levels reduce we will be able to access the network for inspections and also ensure customers switchboards have not been impacted by water. We expect to gain access to this area when water levels at Wisemans Ferry are below 2m



Cupitts Ln Richmond – complete – 1

Expected ETR – 6:00pm Monday 11/7/2022

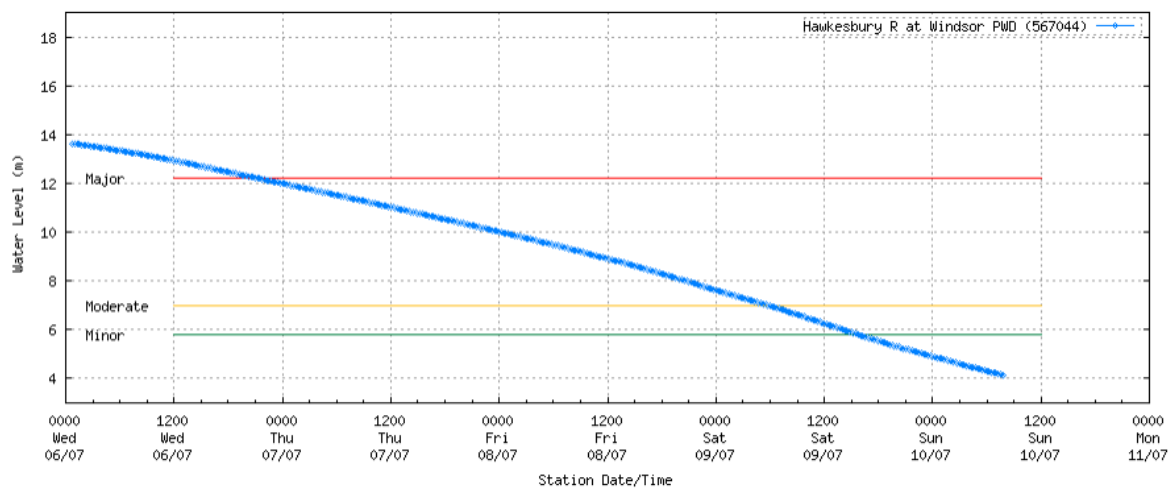
Premises have been isolated as water levels have impacted electricity infrastructure supplying the area. Once water levels reduce we will be able to access the network for inspections and also ensure customers switchboards have not been impacted by water. We expect to gain access to this area when water levels at North Richmond Bridge are below 6m.



Pitt Town Ferry Rd Wilberforce – Customers impacted – 4 restored, 1 remaining

Expected ETR – **6:00pm Wednesday 13/7/2022**

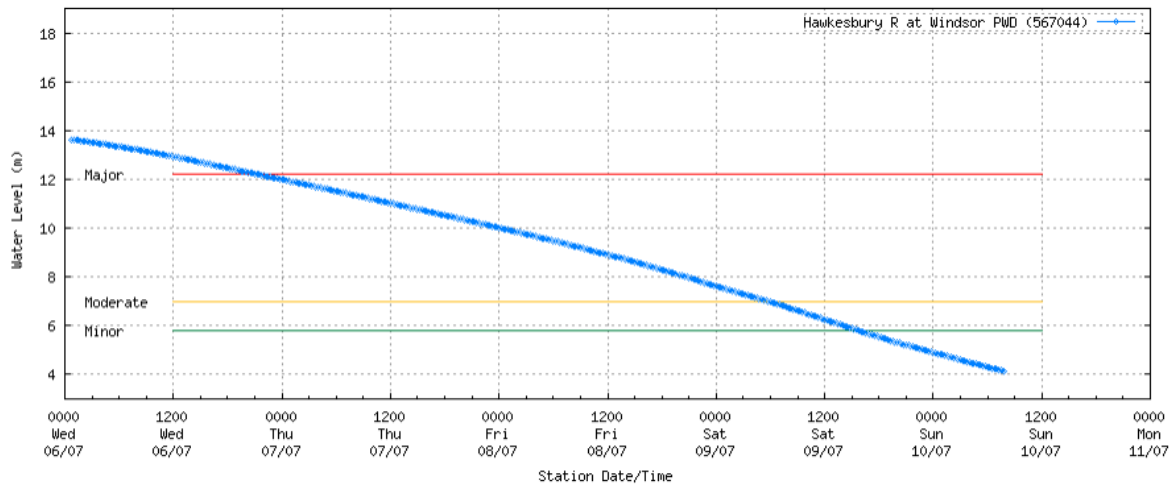
Premises have been isolated as water levels have impacted electricity infrastructure supplying the area. Once water levels reduce we will be able to access the network for inspections and also ensure customers switchboards have not been impacted by water. We expect to gain access to this area when water levels at Windsor Bridge are below 4m



Canning Pl Pitt Town – Customers impacted – 2

All homes restored. 2 irrigation pumps remaining

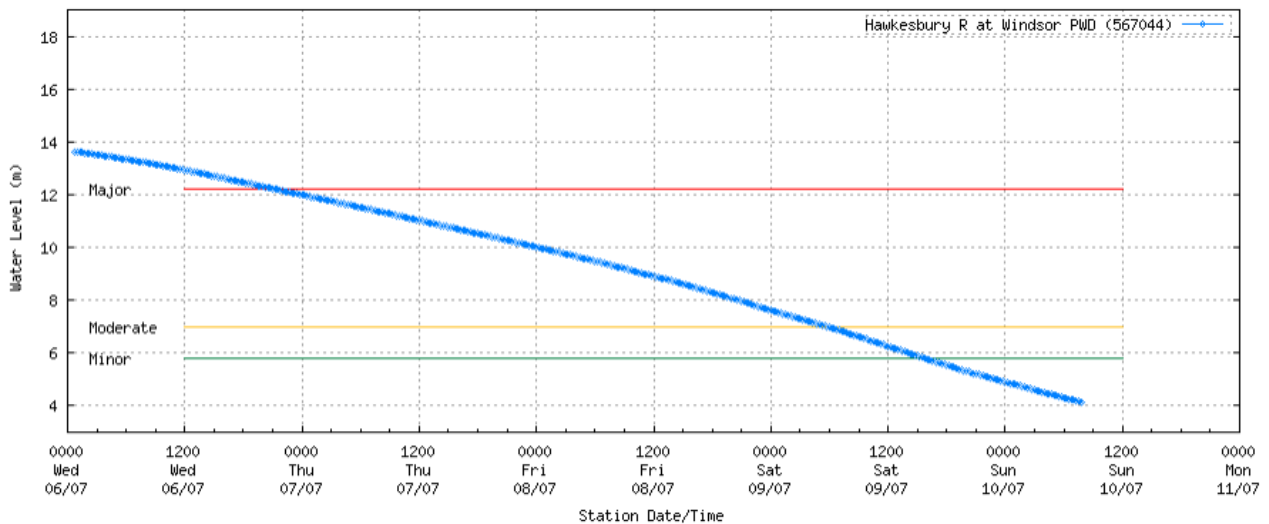
Premises have been isolated as water levels have impacted electricity infrastructure supplying the area. Once water levels reduce we will be able to access the network for inspections and also ensure customers switchboards have not been impacted by water. We expect to gain access to this area when water levels at Windsor Bridge are below 4m



Off Sackville Rd Ebenezer – Customers impacted – 4

Expected ETR – 6:00pm Thursday 14/7/2022

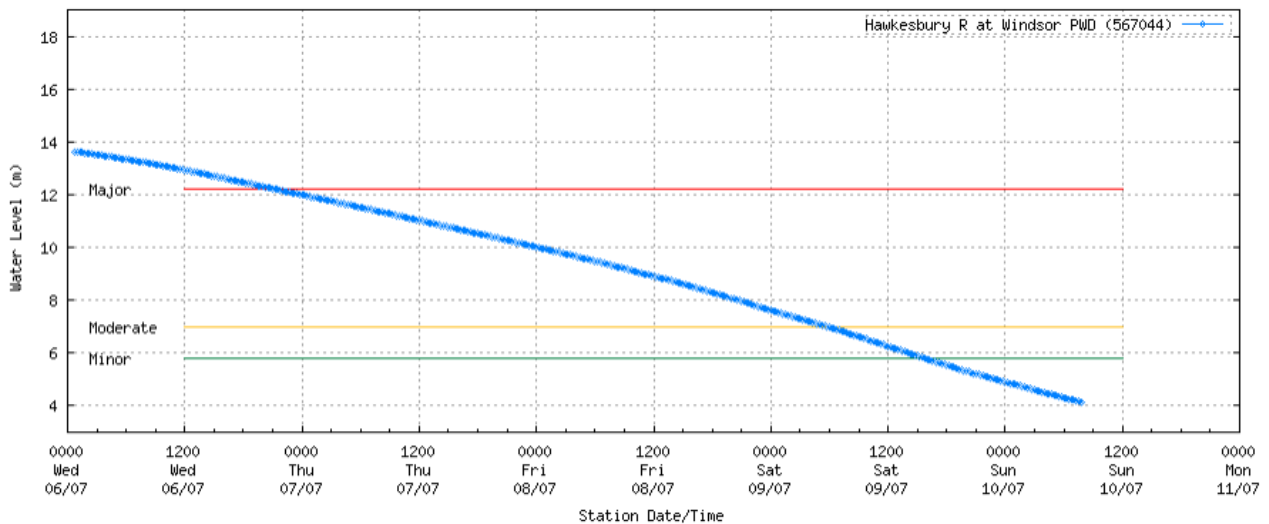
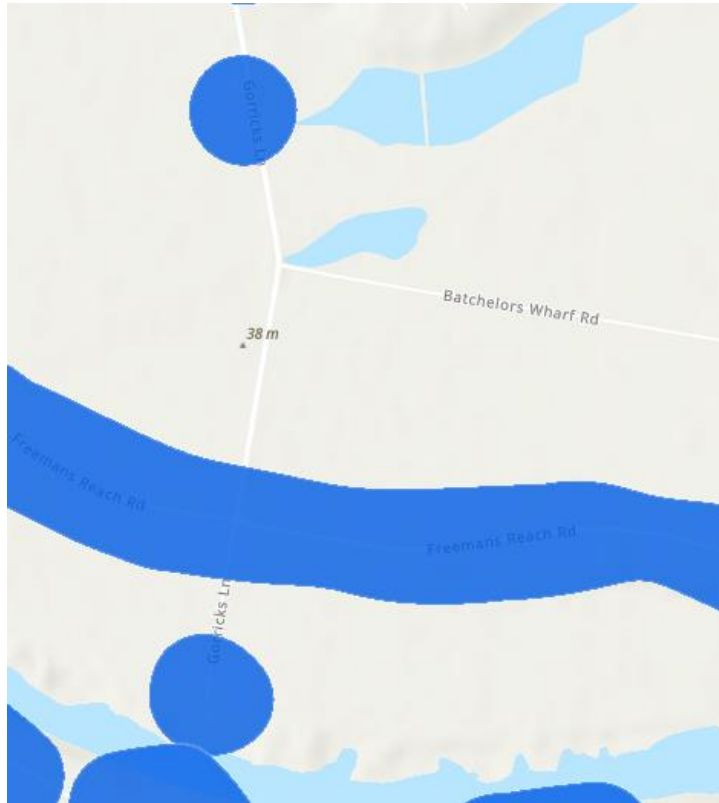
Premises have been isolated as water levels have impacted electricity infrastructure supplying the area. Once water levels reduce we will be able to access the network for inspections and also ensure customers switchboards have not been impacted by water. We expect to gain access to this area when water levels at Windsor Bridge are below 4m



Gorricks Ln Freemans Reach – Customers impacted – 7

Expected ETR – 6:00pm Wednesday 13/7/2022

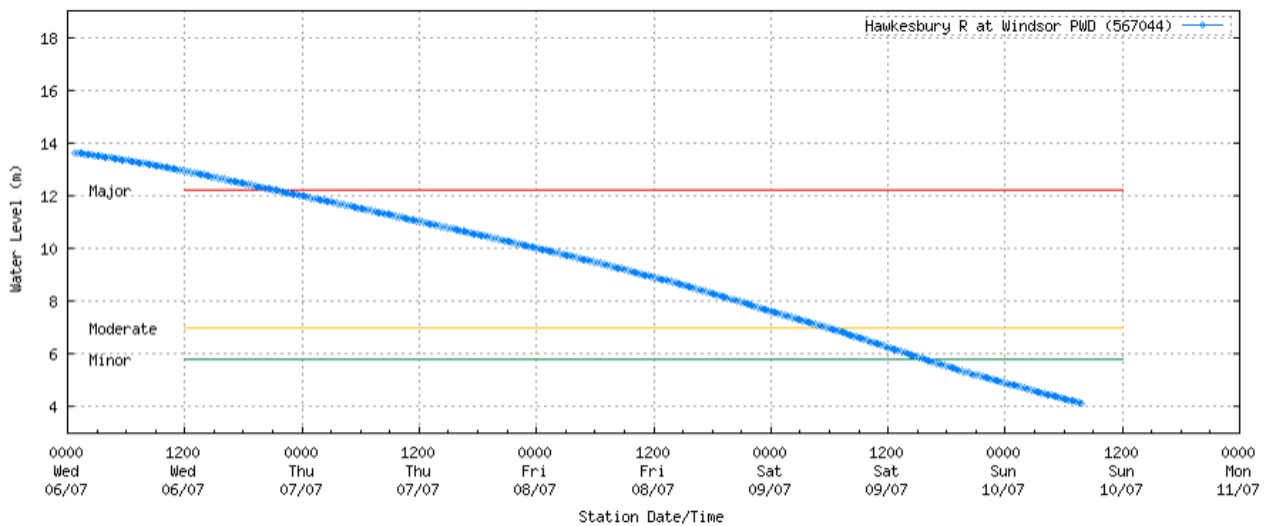
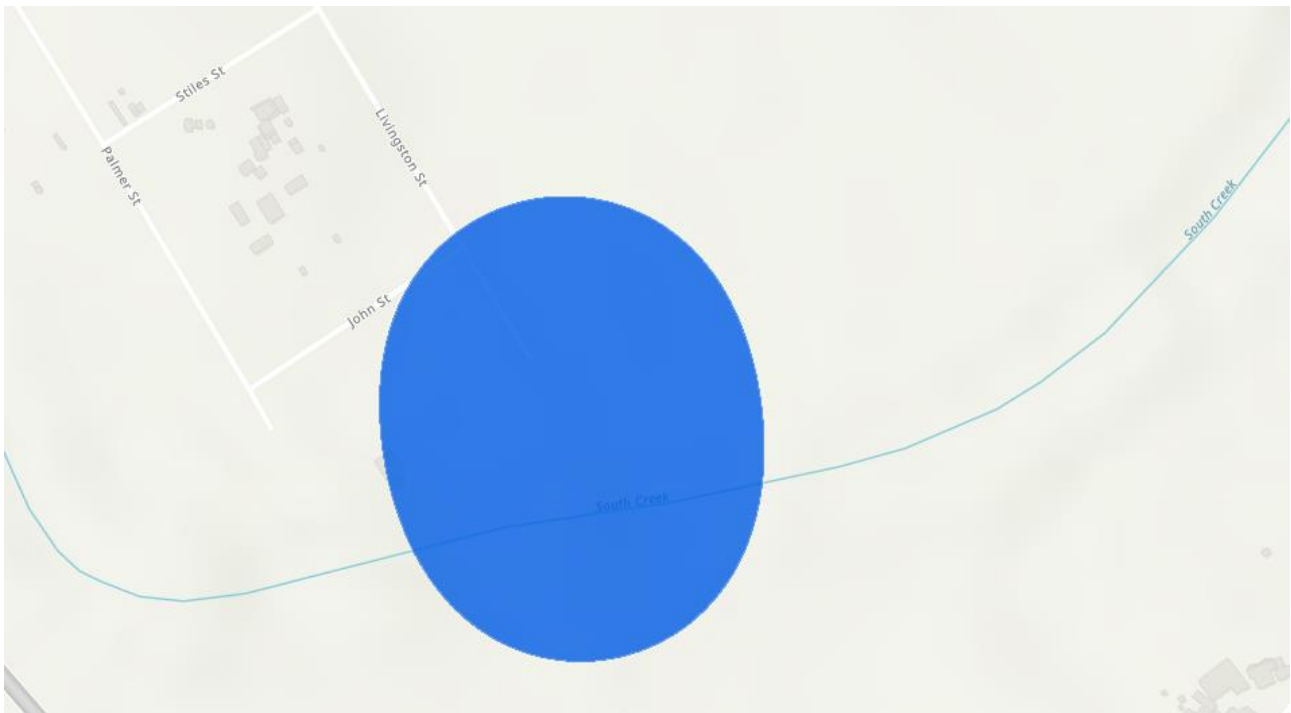
Premises have been isolated as water levels have impacted electricity infrastructure supplying the area. Once water levels reduce we will be able to access the network for inspections and also ensure customers switchboards have not been impacted by water. We expect to gain access to this area when water levels at Windsor Bridge are below 3m



Livingston St Windsor – complete – 2

Expected ETR – 6:00pm Monday 11/7/2022

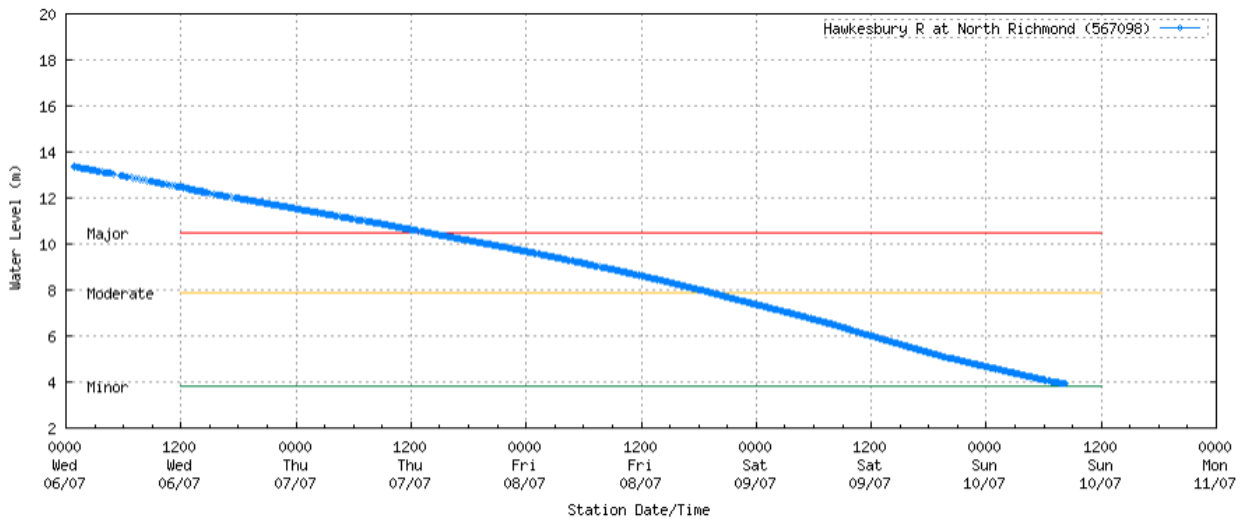
Premises have been isolated as water levels have impacted electricity infrastructure supplying the area. Once water levels reduce we will be able to access the network for inspections and also ensure customers switchboards have not been impacted by water. We expect to gain access to this area when water levels at Windsor Bridge are below 4m



Yarramundi – completed – 2

Estimated ETR – 4:00pm Monday 11/7/2022

Premises have been isolated as water levels have impacted electricity infrastructure supplying the area. Once water levels reduce we will be able to access the network for inspections and also ensure customers switchboards have not been impacted by water. We expect to gain access to this area when water levels at North Richmond Bridge are below 6m

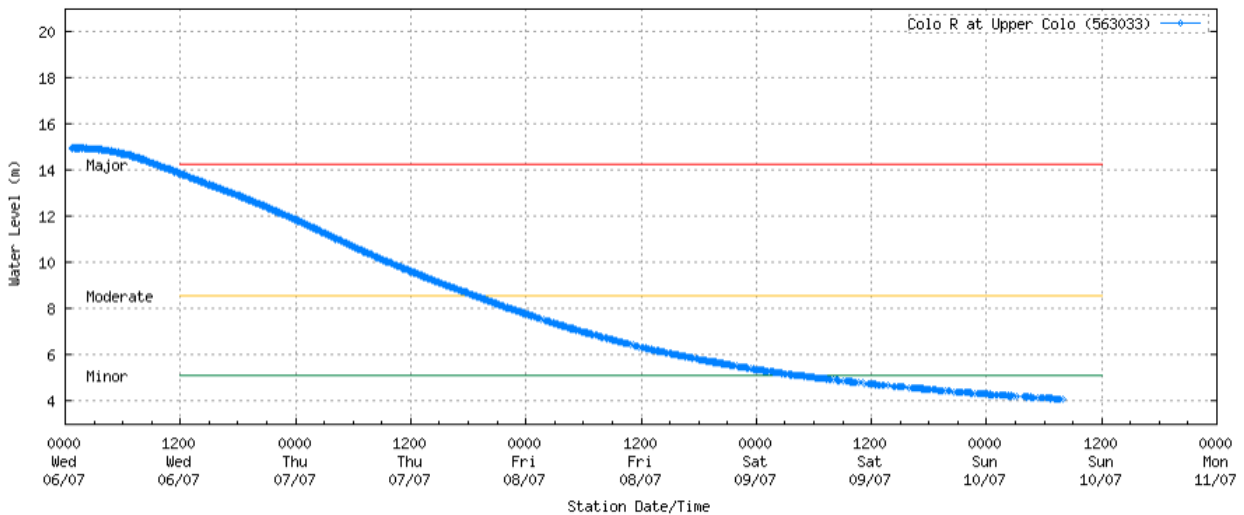
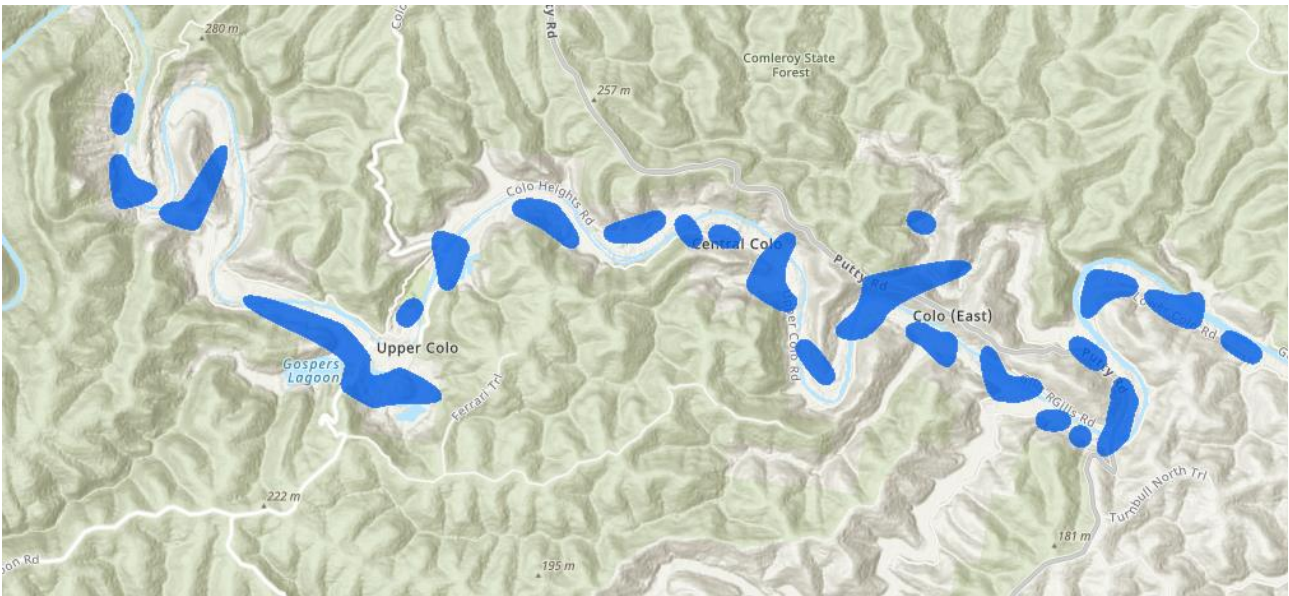


UPPER COLO

Lower Colo Rd & Putty Road, Lower Portland – complete – 86

Expected ETR – 6:00pm Tuesday 12/7/2022

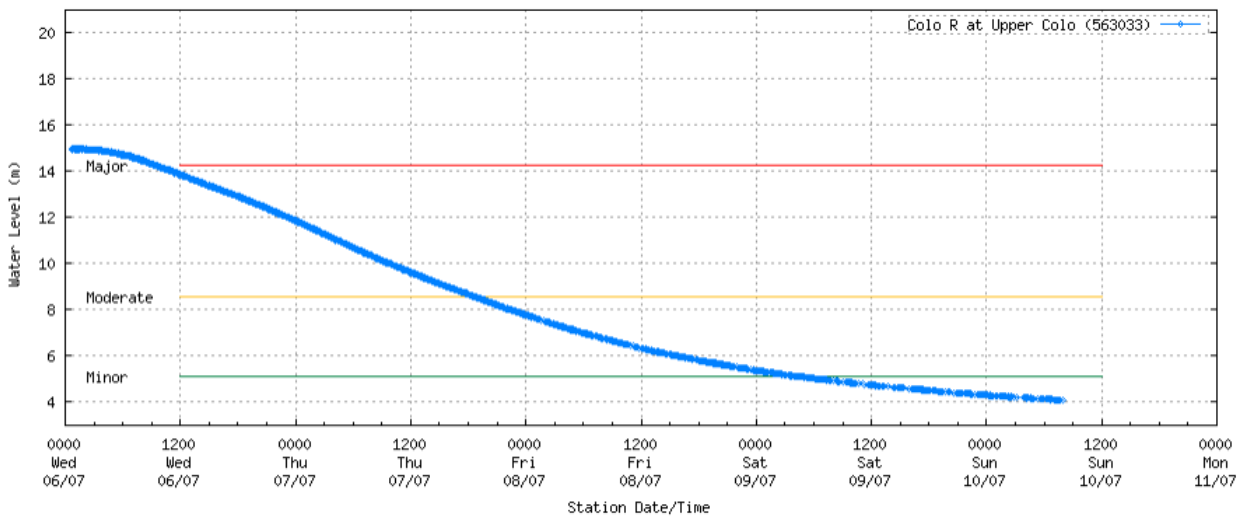
Premises have been isolated as water levels have impacted electricity infrastructure supplying the area. Once water levels reduce we will be able to access the network for inspections and also ensure customers switchboards have not been impacted by water. Premises have begun to be restored and will continue to be as water recedes. Full restoration expected by above ETR.



Near Comleroy Rd, Upper Colo – Customers impacted – 2

Expected ETR – 6:00pm Tuesday 12/7/2022

Premises have been isolated as water levels have impacted electricity infrastructure supplying the area. Once water levels reduce we will be able to access the network for inspections and also ensure customers switchboards have not been impacted by water. We expect to gain access to this area when water levels at Colo to be below 4m



Old Bathurst Rd, Emu Plains – complete – 1 (water pump only)

Expected ETR – 6:00pm Sunday 10/7/2022

Premises have been isolated as water levels have impacted electricity infrastructure supplying the area. Once water levels reduce we will be able to access the network for inspections and also ensure customers switchboards have not been impacted by water. We expect to gain access to this area when water levels at Colo to be below 4m

