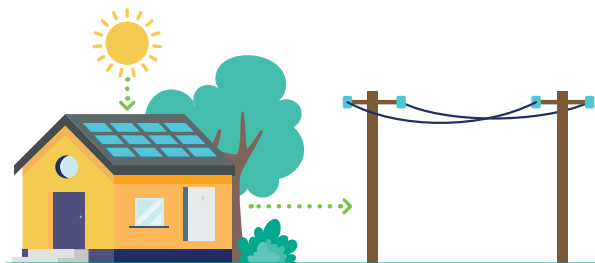


# Flexible Exports

More solar • More savings • A smarter and more sustainable grid



Half of Endeavour Energy's 1.2 million customers are forecast to have rooftop solar by 2040.

## We are acting now to make the grid smart and sustainable, benefiting everyone

More households are exporting more solar energy to the grid than ever before, from rooftop systems double the size they were 10 years ago. This rooftop solar energy is vital to our shared, sustainable and affordable energy future.

But there is a hurdle we are working to overcome. Yesterday's grid was not designed to receive large amounts of solar energy. On sunny days, lots of excess solar energy can overload the grid, causing local power outages and damaging appliances.

To prevent this, we currently apply a fixed limit on the amount of excess solar energy customers can feed back into the grid at all times.

### It's time for a smarter, more flexible approach that benefits all customers

We are investing in smart grid upgrades that enable us to limit solar exports only where it is needed to protect the local power supply.

That means solar customers can safely double their solar exports, getting the most value from their rooftop solar. And all customers can access more cheap, renewable energy in the grid, driving our sustainable energy future together.



## Introducing Flexible Exports

Flexible Exports is a new connection choice that sees Endeavour Energy and solar customers work together to increase solar exports and keep the local grid stable.

With Flexible Exports, customers on single phase power can export up to 10kW of solar energy to the grid, double the current, fixed export limit (5kW).

We can double the solar export limit with Flexible Exports because customers allow Endeavour Energy to remotely limit their solar exports only when needed to help maintain a reliable local supply.

With Flexible Exports, solar customers can make real savings, contribute to our shared, sustainable energy future, and support a reliable power supply for all customers. **The customer benefits are real.**



**x2**

Amount of solar energy that solar customers can export to the grid.



**+600<sub>MW</sub>**

More rooftop solar energy unlocked with Flexible Exports.



**+\$100<sub>M</sub>**

In additional savings for solar customers by 2035.

## How does Flexible Exports work?

By participating in Flexible Exports, solar customers allow Endeavour Energy to communicate securely over the internet with their smart solar inverter, and remotely adjust their solar exports down **only when needed** to stabilise the local grid.

We know that solar customers get the best value from their solar investment by consuming the solar energy they generate from their rooftop system. Participating in Flexible Exports does not affect when or how much solar energy customers consume to power their homes or businesses. It only allows Endeavour Energy to remotely limit exports of the excess solar energy they don't consume back to the grid, to maintain reliability in their local area.

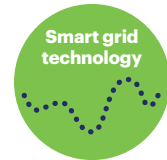
**Solar customers with single phase power who choose Flexible Exports can export up to 10kW of excess solar energy (double the current fixed limit) almost all the time (95%)**



Your solar system's smart inverter



...communicates with the local grid via the internet, via secure servers...



...increasing and decreasing exporting capacity in real time, based on local grid demand.

## Can I get Flexible Exports?

Endeavour Energy is working with customers, solar retailers and solar installers to make Flexible Exports available to all export-limited solar customers from Spring 2025.

To help us design Flexible Exports as a standard offer for solar customers in the future, we have started a **Flexible Exports service**.

Existing solar customers with single phase power and compatible smart solar inverters that are export limited to 5kW are eligible to join our Flexible Exports Trial.

Participating in our Flexible Exports service is **voluntary and free**. By participating in the service, you can:



Access a flexible export limit of 10kW (double the fixed limit)



Save on your household energy costs



Support a sustainable energy future and reliable network services for all

## The savings are real

These customer profiles are based on three real solar customers within the Endeavour Energy network. They all assume a 7c feed-in tariff.



### Preschool

with a 10kW solar system

Hill Top, Southern Highlands

Saving **\$163/year\***



### 2 storey townhouse

with an 8kW solar system

Oxley Park, Western Sydney

Saving **\$51/year\***



### 4 bedroom house

with a 10kW solar system

Milton, Shoalhaven

Saving **\$163/year\***

## How can I register to participate in the Flexible Exports Trial?

More about Flexible Exports



[www.endeavourenergy.com.au/modern-grid/flexible-exports](http://www.endeavourenergy.com.au/modern-grid/flexible-exports)

More on participating



[www.endeavourenergy.com.au/modern-grid/flexible-exports/consumer-trial](http://www.endeavourenergy.com.au/modern-grid/flexible-exports/consumer-trial)

Find out if you are eligible



[www.endeavourenergy.com.au/modern-grid/flexible-exports/consumer-trial/faqs](http://www.endeavourenergy.com.au/modern-grid/flexible-exports/consumer-trial/faqs)

\* The exact amount you can save will depend on a variety of factors, including the size of your solar system, the rated power output of your inverter and the feed-in tariff you receive from your electricity retailer, and how much excess solar energy you export to the grid.